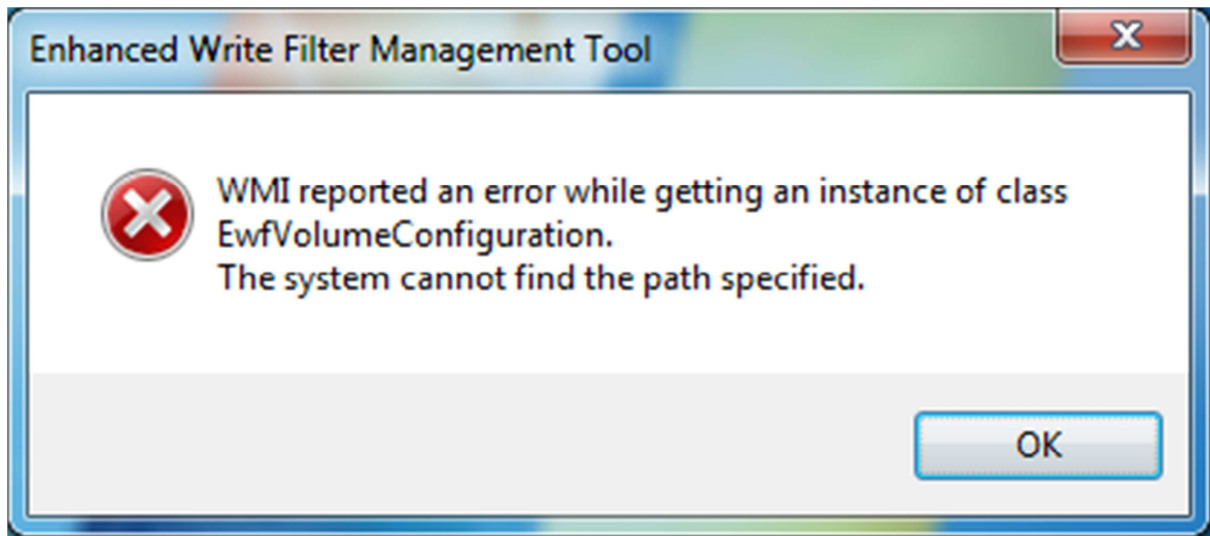


Advantech AE Technical Share Document

Date	2018 / 06 / 22	Release Note	<input type="checkbox"/> Internal <input checked="" type="checkbox"/> External
Category	<input checked="" type="checkbox"/> FAQ <input type="checkbox"/> SOP	Related OS	WES7
Abstract	How to fix EWF error after using Ghost to recover WES7 image?		
Keyword	WES7, EWF, Ghost		
Related Product	All ASG products which support WES7		

■ **Problem Description:**

An error message of Enhanced Write Filter will pop up at each boot if user uses Ghost to copy WES7 image.



■ **Problem Analysis:**

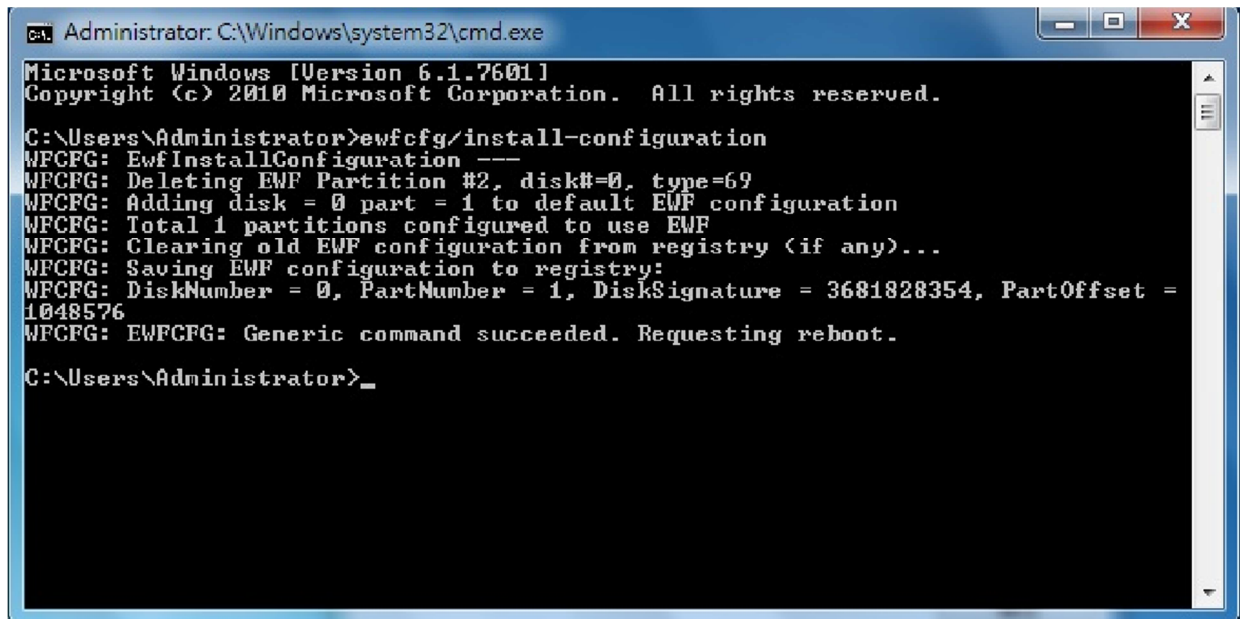
Enhanced Write Filter will create a hidden partition in storage automatically whether the EWF function is enabled or disabled.

After using Ghost to copy the WES7 image and then restore it to another disk, this hidden partition will be ignored. The missing partition will cause error on EWF function.

■ Brief Solution:

1. Open the Command Prompt and enter the following command:
“ewfcfg /install-configuration” the result will be as shown in figure 1.
2. Then reboot the computer.

<Figure 1>



```
Administrator: C:\Windows\system32\cmd.exe
Microsoft Windows [Version 6.1.7601]
Copyright (c) 2010 Microsoft Corporation. All rights reserved.

C:\Users\Administrator>ewfcfg/install-configuration
WFCFG: EwfInstallConfiguration ---
WFCFG: Deleting EWF Partition #2, disk#=0, type=69
WFCFG: Adding disk = 0 part = 1 to default EWF configuration
WFCFG: Total 1 partitions configured to use EWF
WFCFG: Clearing old EWF configuration from registry (if any)...
WFCFG: Saving EWF configuration to registry:
WFCFG: DiskNumber = 0, PartNumber = 1, DiskSignature = 3681828354, PartOffset =
1048576
WFCFG: EWFCFG: Generic command succeeded. Requesting reboot.

C:\Users\Administrator>_
```