

# Advantech AE Technical Share Document

<b>Date</b>	2018/9/28	<b>Release Note</b>	<input type="checkbox"/> Internal <input checked="" type="checkbox"/> External
<b>Category</b>	<input checked="" type="checkbox"/> FAQ <input type="checkbox"/> SOP	<b>Related OS</b>	
<b>Abstract</b>	What Camera Utility Should I Use for Quartz Camera?		
<b>Keyword</b>	Quartz Camera, QCAM, Camera Utility		
<b>Related Product</b>	QCAM, PCIE-1672, PCIE-1674, PCIE-1172, PCIE-1174		

■ **Problem Description:**

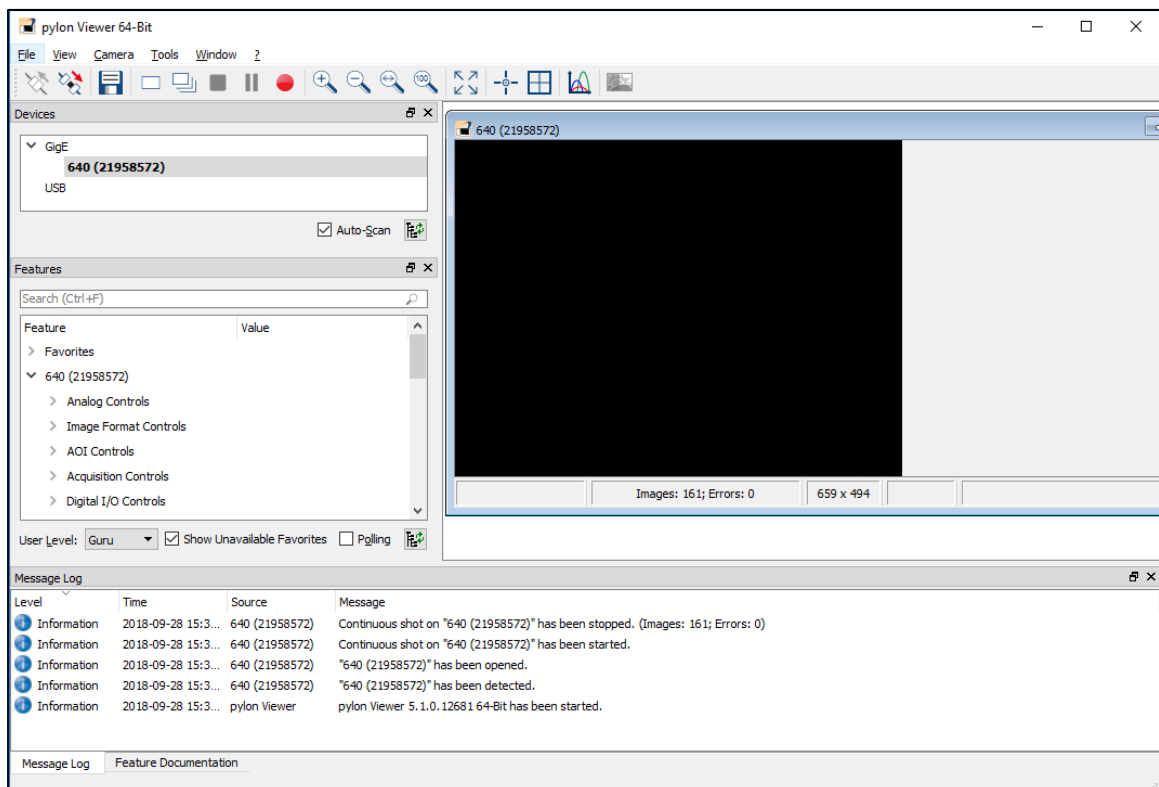
Users may need to use camera utility to adjust certain camera settings such as AOI, exposure time, gain, and so on from time to time to accommodate their vision applications. It is sometimes confusing to determine which camera utility to use as it will differ in accordance with the camera and the frame grabber used.

In this documentation, you will find information regarding which camera utility to use and where to get it step by step.

■ **Brief Solution - Step by Step:**

If you connect Quartz camera to PCIE-1672 or PCIE-1674:

1. Click on [here](#) to download the latest camera software (e.g. pylon 5.1.0 Camera Software Suite Windows).
2. Run the installer and select a suitable user profile & camera interface to install.
3. Use pylon IP Configurator to set IP address and subnet mask for NIC and camera.
4. Use pylon Viewer to connect to camera, adjust camera setting, and capture live images.

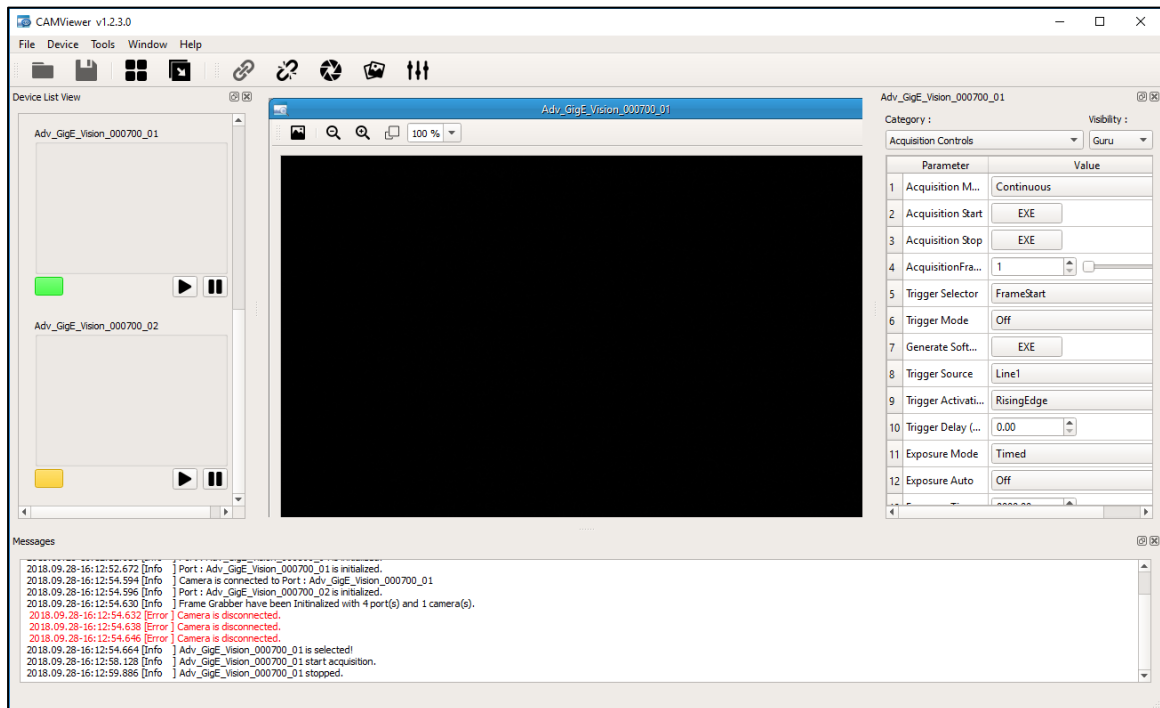


Note: If you find the image capture or parameter setting is somehow irresponsive or corrupted, continue to apply the following step 5 and install a special pylon license.

- (Optional, apply only when necessary) Click [here](#) to download the license pack. Follow the instructions in the readme document to finish installing the license files.

If you connect Quartz camera to PCIE-1672 or PCIE-1674:

- Make sure the CAMNavi SDK has been installed properly. If it has not been installed, please go to [Advantech Support Portal](#) to download and install it.
- Run CAMViewer utility to configure camera and capture images.



■ **Reference:**

- Below is the table showing Quartz camera models and their firmware versions which might require the additional license file to be compatible with pylon Camera Suite.

Model	Firmware Version (if not above)
QCAM-GM0640-120CE/DE	107070
QCAM-GM1300-030CE	107092
QCAM-GM1300-060CE	107073
QCAM-GM1600-060DE	107094
QCAM-GM2500-014CE	107034
QCAM-GC0640-120CE	107095
QCAM-GC1300-060CE	107599
QCAM-GC2500-014CE	107600