

Advantech AE Technical Share Document

Date	2018/08/01	SR#	1-3494971123
Category	<input checked="" type="checkbox"/> FAQ <input type="checkbox"/> SOP	Related OS	N/A
Abstract	What are the protocols and corresponded port number of WISE-4000 series?		
Keyword	WISE, protocol, port number		
Related Product	WISE-4010/LAN, WISE-4050/LAN, WISE-4060/LAN, WISE-4012, WISE-4012E, WISE-4050, WISE-4051, WISE-4060, WISE-4220-S231		

■ **Problem Description:**

This document lists out the protocol and the port number with different functions of WISE-4000 Wi-Fi and LAN models.

■ **Brief Solution - Step by Step:**

Function of WISE	Protocol	WISE Port #	Source Port #
Modbus TCP	TCP	502	Any
Web server	TCP + HTTP	80 (configurable)	Any
RESTful	TCP + HTTP	Follow Web server parameter	Any
Download configuration file	TCP + HTTP		Any
Download I/O or system log	TCP + HTTP		Any
Upgrade new firmware	TCP + HTTP		Any
Upload user web page (".ehf" file)	TCP + HTTP		Any
Search by ADAM.NET utility	UDP	5048	Any
Search by WISE studio	UDP	5048	Any
Site survey mode by ADAM.NET utility	UDP	5050	Random when send out package
Site survey mode by WISE studio	UDP	5050	Random when send out package

Protocol	Protocol	WISE Port #	Destination Port #
Site survey mode by ADAM.NET utility	UDP	5050	5168 (configurable)
Site survey mode by WISE studio	UDP	5050	5168 (configurable)
Private server (without TLS/SSL)	TCP + HTTP	TI randomly assigned	8000 (configurable)
Private server (with TLS/SSL)	TCP + HTTPs	TI randomly assigned	8080 (configurable)
Azure	TCP + HTTPs	TI randomly assigned	443
iSensing MQTT	TCP + WebSocket	TI randomly assigned	8443 (configurable)
WAMQTT	TCP + WebSocket	TI randomly assigned	80
Dropbox	TCP + HTTPs	TI randomly assigned	443
Aliyun OSS	TCP + HTTPs	TI randomly assigned	443
P2P	UDP	5048 (configurable)	5048 (configurable)
IFTTT	TCP + HTTPs	TI randomly assigned	443

Example 1: site survey by ADAM.NET utility.

A user can change the destination port of utility by the following parameter in red rectangle.

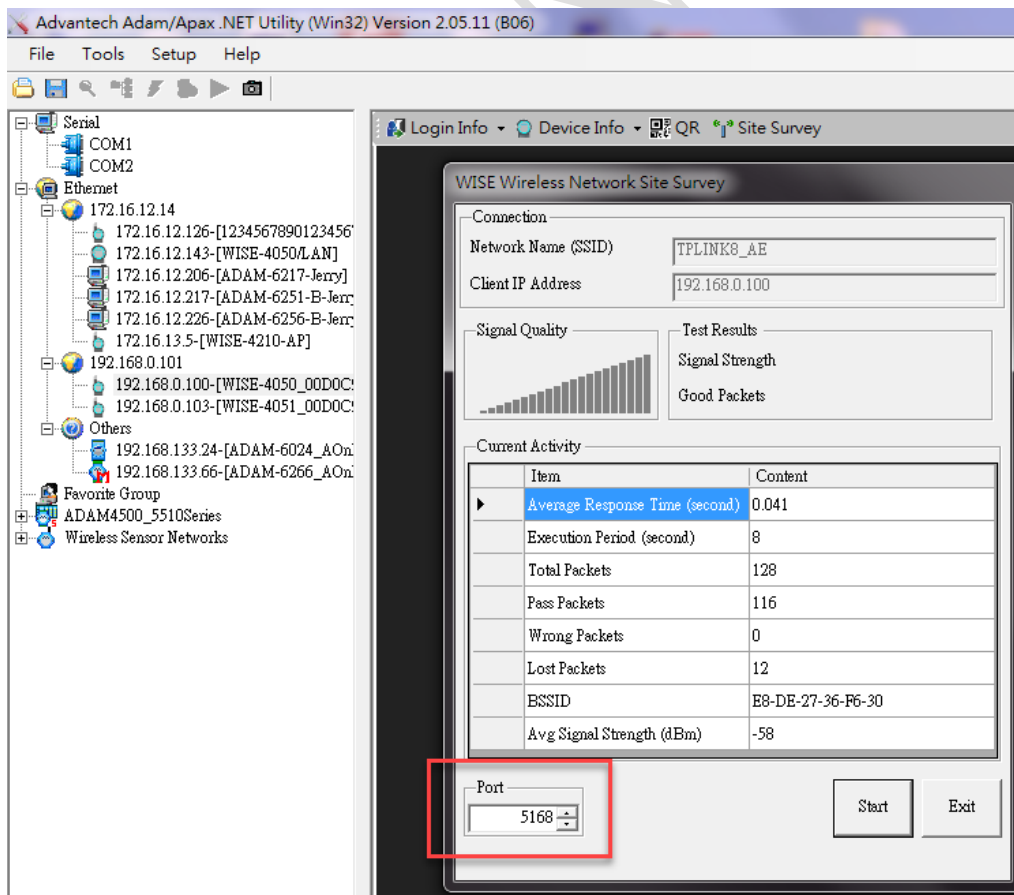


Figure captured from ADAM.NET utility.

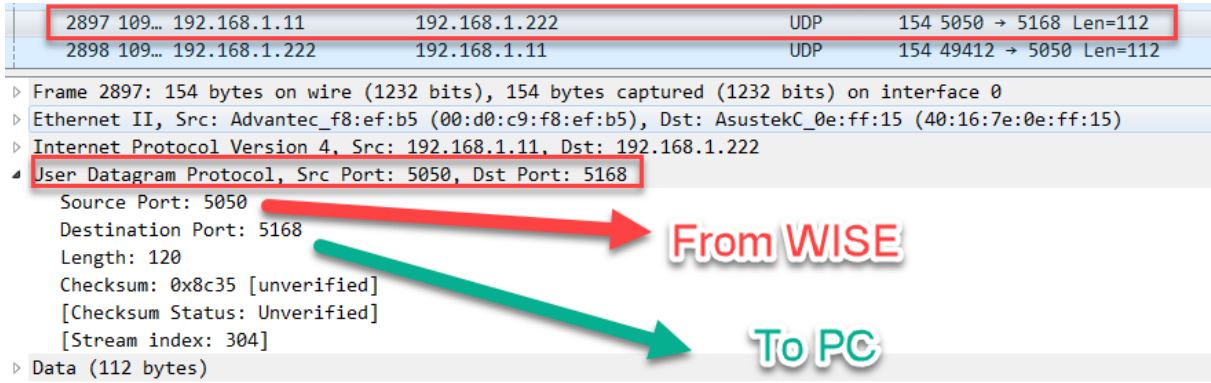
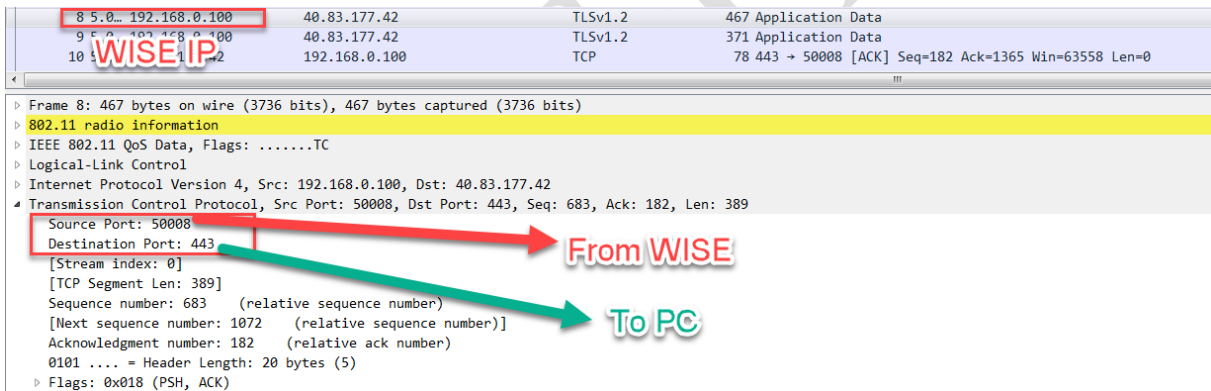


Figure captured from Wireshark.

Example 2: WISE push data to Azure event hub.

WISE	IP	192.168.0.100
	Port number	50008
Azure	IP	40.83.177.42
	Port number	443



Example 3. P2P port

The DESTINATION PORT parameter represents the sending and receiving port.

Peer to Peer

Mode Destination

Mode Disable Basic Advanced

Periodically Transmission

QoS Level for Response no response

Encryption Type AES-128

Destination Port 5048