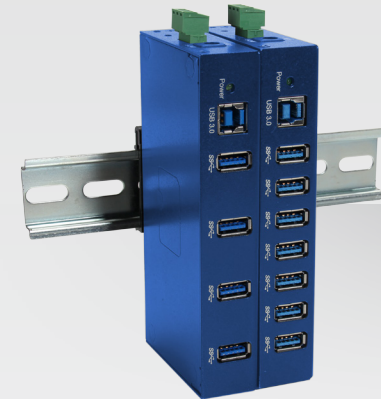


+ QUICK START GUIDE



BB-USH204 or BB-USH207

Industrial 4 or 7 Port USB 3.0 Hub

Before you begin, be sure you have the following:

- + Industrial USB Hub (included)
- + USB 3.0 Type A to B Cable, 2m (included)
- + DIN Rail & Wall Mount Kit (included)
- + Terminal Block (included)
- + Power Supply (required, sold separately)
- + USB Cable (additional, sold separately)

+ Recommended Accessories

Power Supply for #BB-USH204

40W, 12V, DIN Rail, Slim, Plastic
Model BB-MDR-40-12



USB 3.0 Cable

3 ft. (0.91 m)
Model BB-USB3AMBM-3FT



B+B SMARTWORX

Powered by

ADVANTECH

1-888-948-2248 | Europe: +353 91 792444

advantech-bb.com

707 Dayton Road | PO Box 1040 | Ottawa, IL 61350

Phone: 815-433-5100 | Fax: 815-433-5109

www.advantech-bb.com | E-mail: support@advantech-bb.com

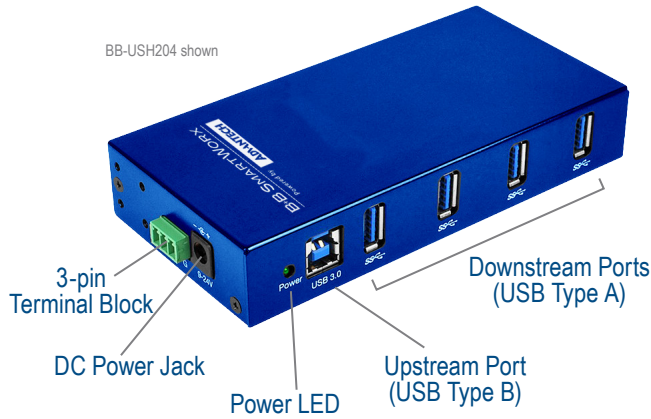
B+B SMARTWORX

Powered by

ADVANTECH

Fast and easy on the web: www.advantech-bb.com

Product Overview



USB 3.0 HUB - SPECIFICATIONS	
USB Specification	USB 3.0 Compliant
Enclosure	Industrial grade metal housing
ESD Protection	15KV, USB interface
Power Input	Redundant 9 to 24V DC
Surge Protection	600W, power input, each port
Dimensions	5.5W x 2.7D x 1.0H in (139.7W x 68.6D x 25.4H mm)
Mounting	Wall or DIN rail mount (kit included)

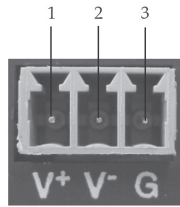
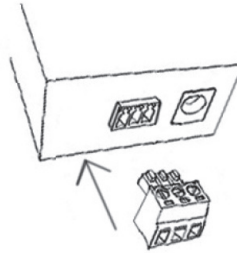
1 | Power

The USB 3.0 hub requires a 9-24 VDC external power source to work (not included, sold separately). A 36 Watt or greater power supply is recommended.

Power up the USB hub through either the DC power jack or 3-pin terminal block.

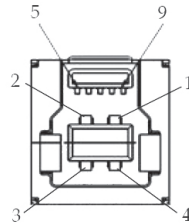
2 | 3-Pin Terminal Block

Plug the included terminal block into the hub's terminal block connector - see figure below. Refer to the Pin Assignment table below for wiring the power adapter (power adapter not included).



Pin Assignment	
1	V+ (9-24V DC)
2	V-
3	GND

3 | USB 3.0 Type B Upstream Port



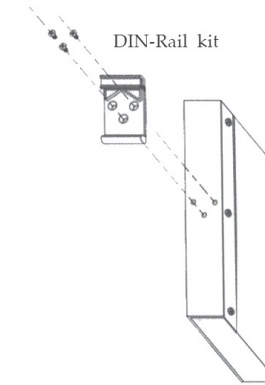
USB Type B Port - Pin Assignment			
Pin		Pin	
1	Vbus	6	StdA-SSTX+
2	D-	7	GND_DRAIN
3	D+	8	StdA_SSRX-
4	GND	9	StdA_SSRX+
5	StdA-SSTX-	Shell	Shield

4 | Hardware Installation

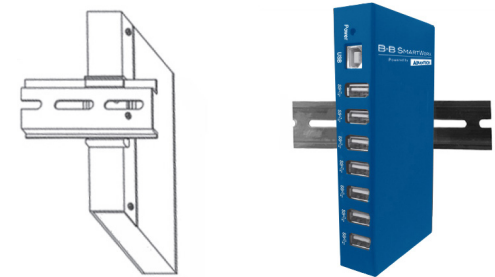
Mount your hub on the wall or DIN rail, if needed.

DIN Rail Mounting

Use the included screws to install the DIN rail kit to the hub.



Insert the top of the DIN rail clip onto the DIN rail track, then gently push the bottom of the hub to secure it to the DIN rail track.



Wall Mount Plate Mounting

Use the provided wall mount plate to mount the hub to the wall.

