

Advantech SE Technical Share Document

Date	2019 / 01 / 8	Related Product		
Category	<input checked="" type="checkbox"/> FAQ <input type="checkbox"/> SOP <input type="checkbox"/> Driver Tech Note			
Abstract	Popup a warning message when an alarm is triggered			
Keyword	WebAccess/SCADA, View, ViewDAQ, Popup, DSP			
Related OS	Win7, Windows Server 2008 / 2012 / 2016, Win10			
Revision History				
Date	Version	Author	Reviewer	Description
2019/1/8	V1.0	Alger	Nick.Liu	

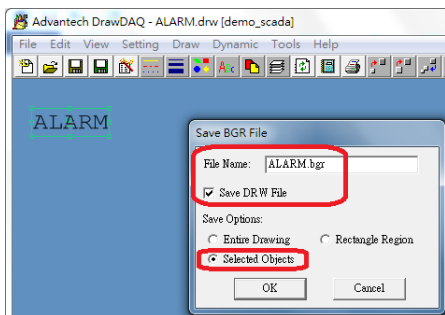
■ **Problem Description & Architecture:**

This document describes how user can create a pop-up warning screen when an alarm is triggered.

■ **Brief Solution - Step by Step:**

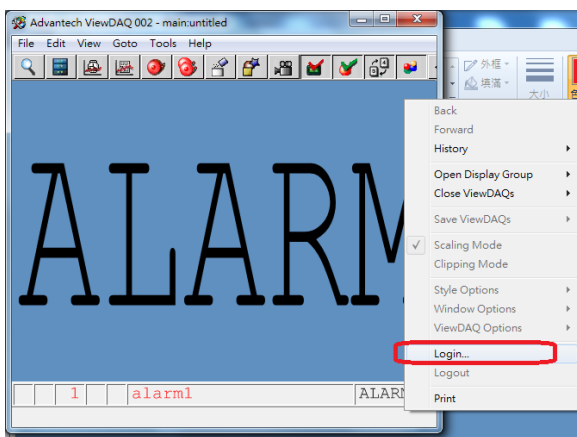
1. To create a popup screen

- DrawDAQ -> new DRW -> use Text object to create a message.
e.g. ALARM
- Save both BGR and DRW by using “Selected Objects”; save file as Alarm.bgr and alarm.drw



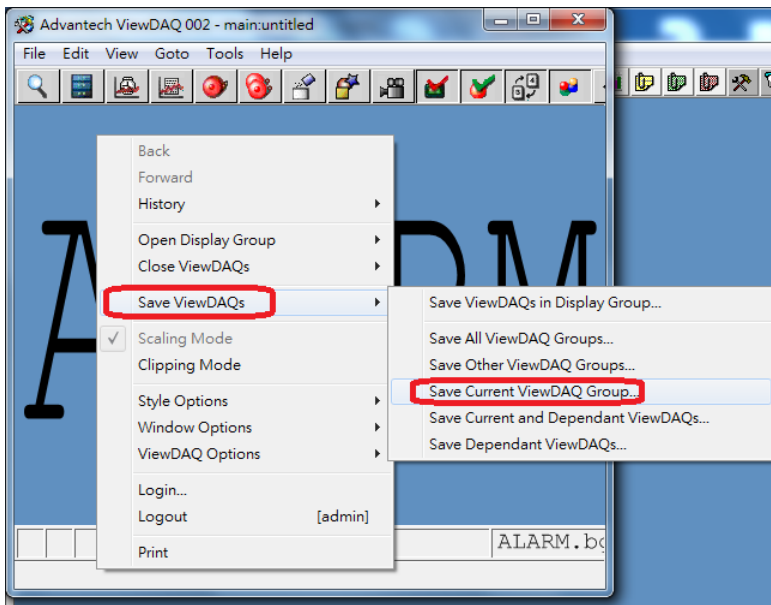
2. Open alarm.bgr In ViewDAQ

Move mouse in alarm.bgr and click right button of mouse, then select “Login” to login



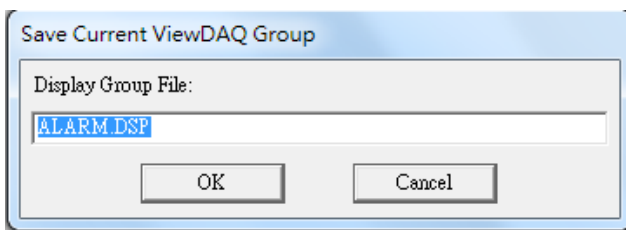
3. Again, move mouse cursor in the alarm.bgr and then click right button of mouse

- Save ViewDAQs -> Save Current ViewDAQ Group



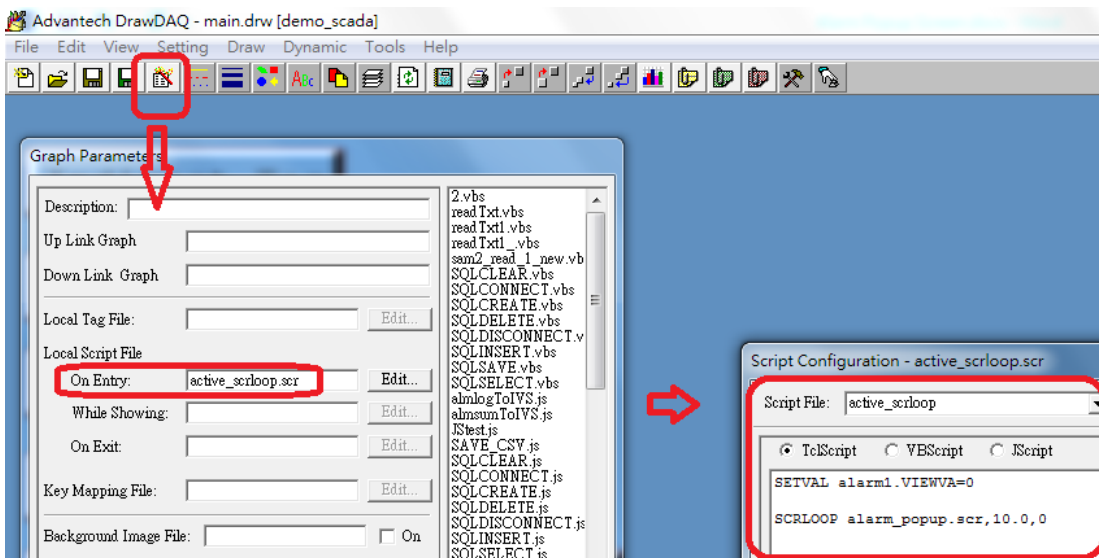
4. Save Display Group File name as "Alarm.dsp"

Once save, user may close ViewDAQ



5. Let's use script to run alarm.dsp

- DrawDAQ -> open "main.drw" -> Set Graph Parameter -> On Entry
- Create a new TCLScript
e.g. active_scrloop.scr



Active_scrloop.scr (by using scrloop function, this script will run in all bgr pages)

```
SETVAL alarm1.VIEWVA=0  
SCRLOOP alarm_popup.scr,10.0,0
```

Note: please refer to user manual about how to use SCRLOOP and SCRSTOP

6. Alarm_popup.scr

Explanation: if alarm1 alarm is trigger and unacknowledged, then trigger alarm.dsp popup screen. To avoid alarm.dsp only popup once, user may use "VIEWVA" to control it.

```
if {[GETVAL alarm1.ALMST]==1&&[GETVAL alarm1.VIEWVA]==0} then {  
  BWSPOOL <popup>  
  DSPPOPUPDEP alarm.dsp  
  SETVAL alarm1.VIEWVA=1  
}
```

```
if {[GETVAL alarm1.ALMST]==0} then {
```

```
  SETVAL alarm1.VIEWVA=0  
}
```

■ Pin Definition (in case of serial connection):

■ Reference: