

# Advantech AE Technical Share Document

<b>Date</b>	2015 / 8 / 5	<b>SR#</b>	
<b>Category</b>	<input checked="" type="checkbox"/> FAQ <input type="checkbox"/> SOP	<b>Related OS</b>	N/A
<b>Abstract</b>	How to use DDESpy to debug DDE		
<b>Keyword</b>	BWDDE.		
<b>Related Product</b>	N/A		

■ **Problem Description:**

How to use DDESpy to debug DDE

■ **Brief Solution:**

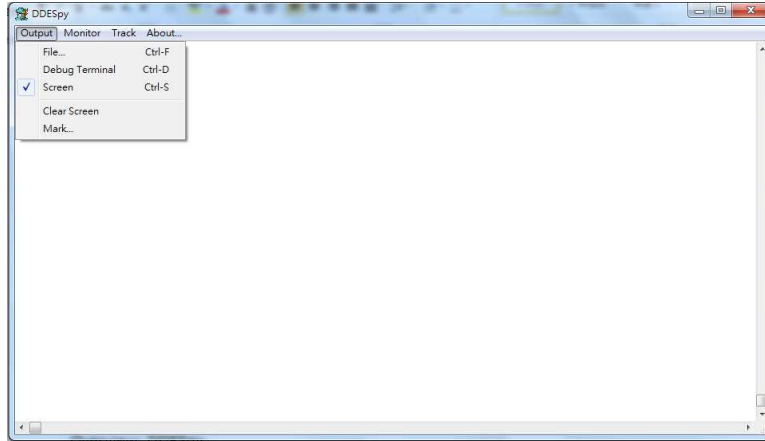
When we use Script function DDEPOKE,DDEREQUEST,DDEEXECUTE or bwdde driver to get data or set data from another application, we can use DDESpy tool to debug the error

1. Download DDESpy from internet,  
for example

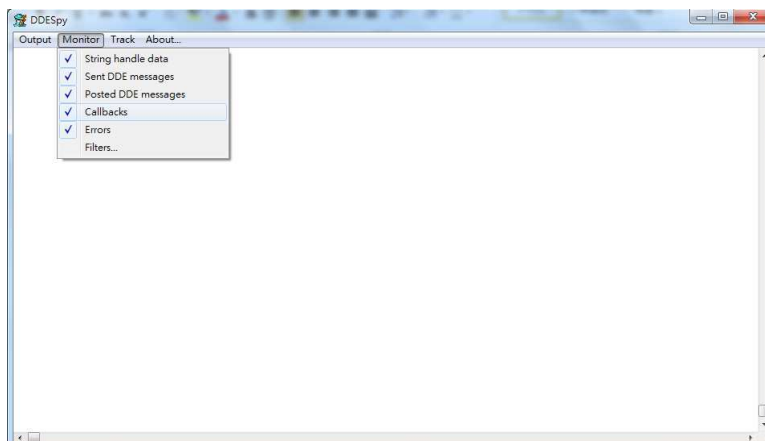
<http://stackoverflow.com/questions/14923011/where-can-i-download-ddespy>

2. Run DDESpy

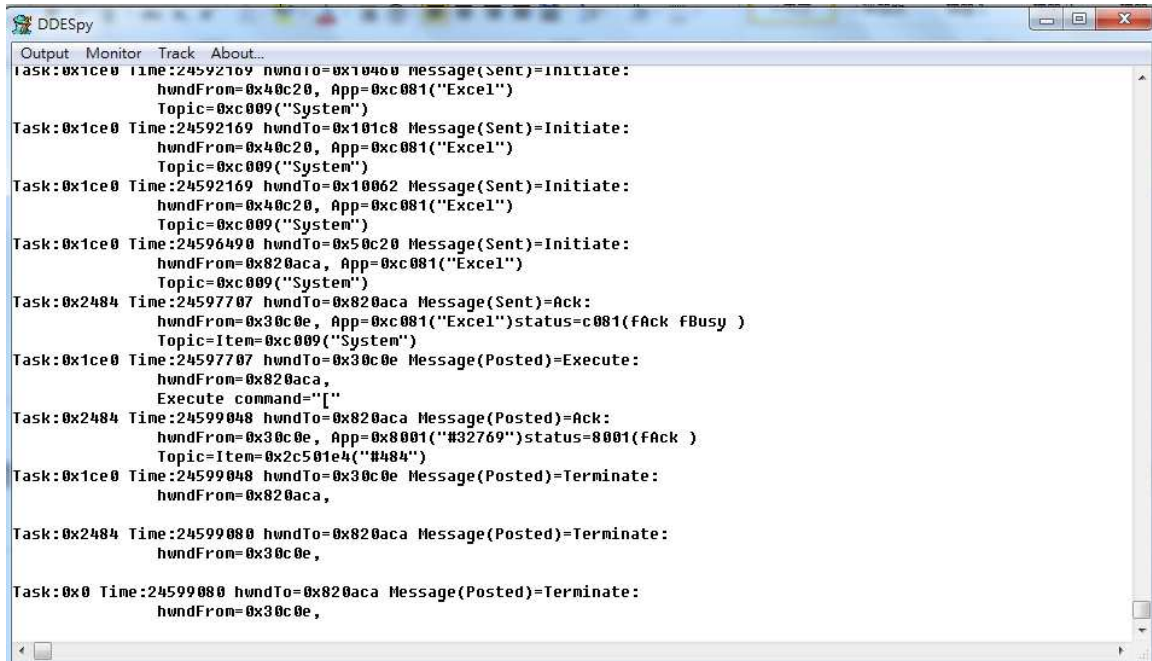
Output -> check the Screen menu item



Monrtor -> check the menu item



Then you can see the DDE Message show in DDESpy Screen



■ **Reference:**

Overview: DDESpy

[https://msdn.microsoft.com/en-us/library/aa265994\(v=vs.60\).aspx](https://msdn.microsoft.com/en-us/library/aa265994(v=vs.60).aspx)