

Advantech SAE Technical Share Document

Date	2017 / 03 / 03	SR#	
Category	<input type="checkbox"/> FAQ <input checked="" type="checkbox"/> SOP	Related OS	Win7/ WinXP / Win10
Abstract	WebAccess/HMI Runtime installation and serial number activate		
Keyword	WebAccess/HMI Runtime		
Related Product	WebAccess/HMI Runtime		

■ **Problem Description:**

WebAccess/HMI Runtime serial number activate

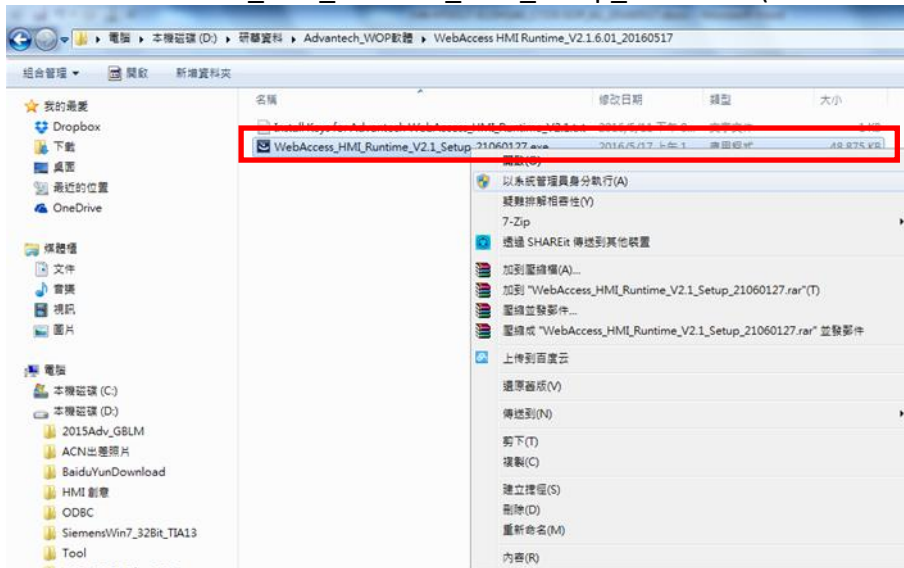
*WebAccess/HMI software download path:

https://support.advantech.com/support/DownloadSRDetail_New.aspx?SR_ID=1-F6UG0T&Doc_Source=Download

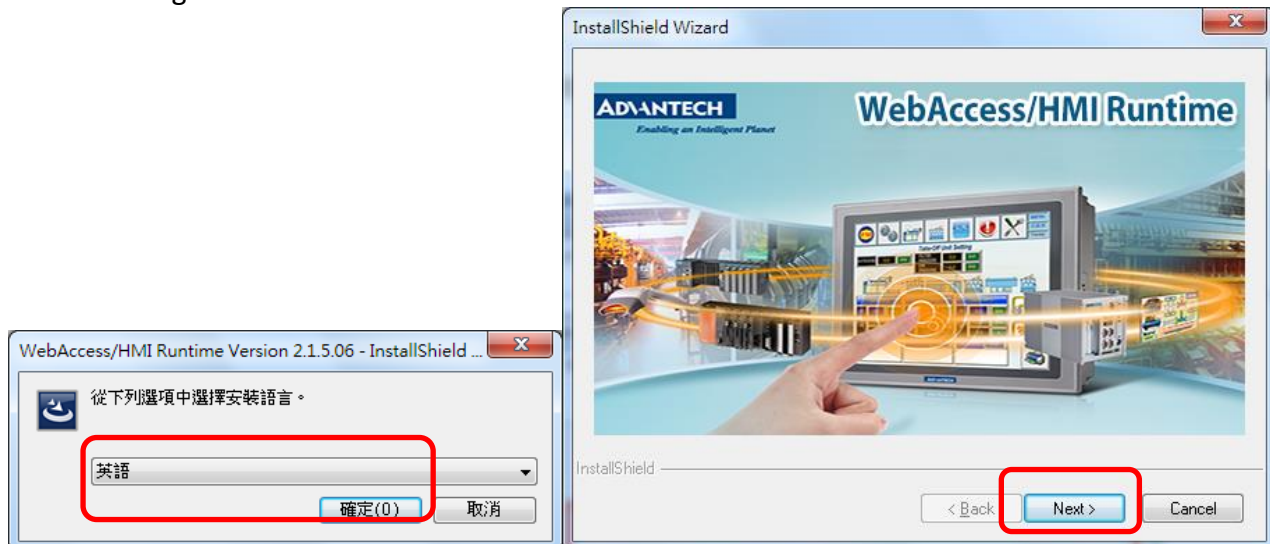
■ **Brief Solution - Step by Step:**

A. WebAccess/HMI Runtime install step:

1. Run“WebAccess_HMI_Runtime_V2.1_Setup_xxxxxxx” (



2. Select "English"

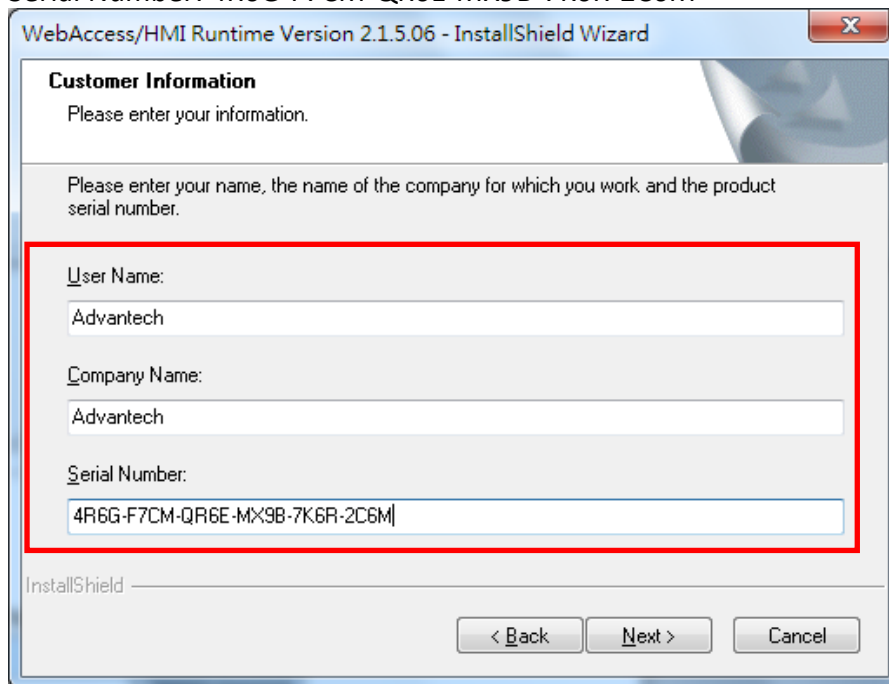


3. Enter:

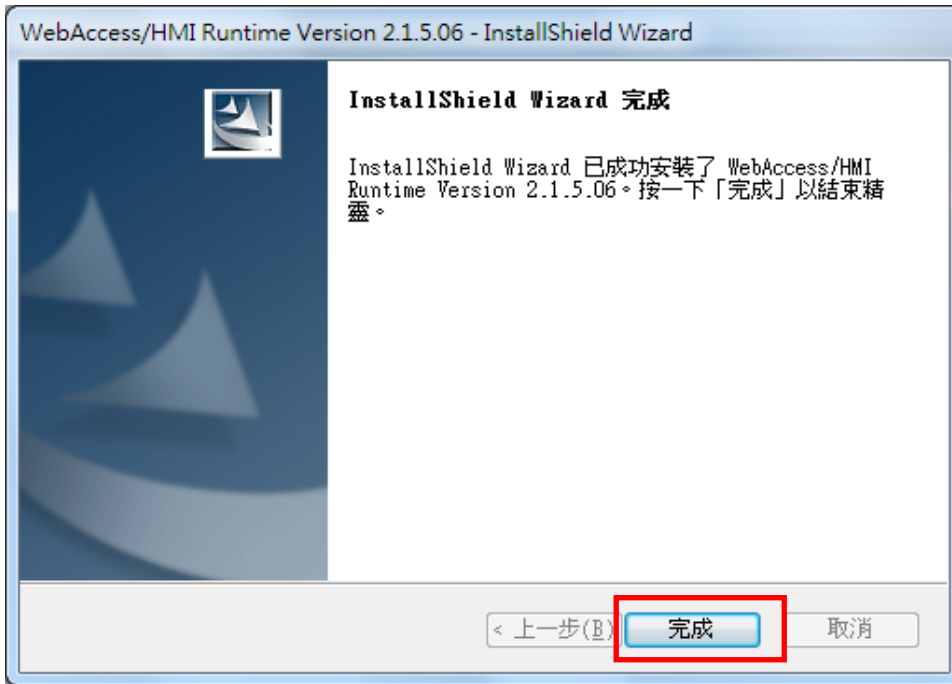
User name: Advantech

Company name: Advantech

Serial Number: 4R6G-F7CM-QR6E-MX9B-7K6R-2C6M

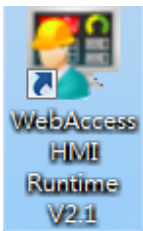


4. Finish



B. WebAccess/HMI Runtime serial number activate.

1. Run **WebAccess/HMI Runtime**



2. Select "Help"

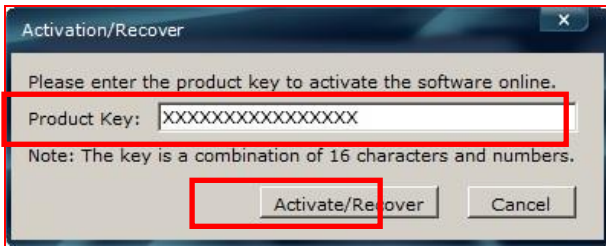


3. Select Activate/Recover

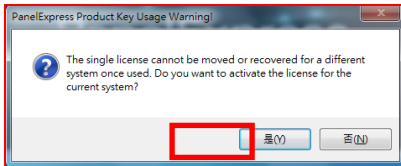


- 3-1. Double check use target HMI runtime workstation IPC must link to "Internet"
- 3-2. Activate/Recover: activate product key.
- 3-3. Buy a WebAccess/HMI Runtime Product Key, and enter Key number to product key space.
- 3-4. Click "Activate/Recover" button.

(Confirm again you have internet ability because the registration will be verified on server)



- 3-5. Double check "Yes or No" activate the product license.



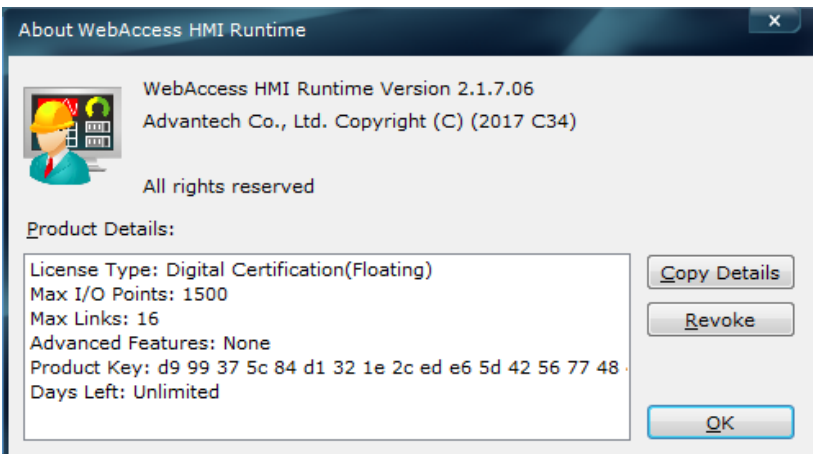
WebAccess/HMI Runtime Product key usage warning!
The WebAccess/HMI Runtime license key is for one time use only.
Please use this ONLY for the target system which you want to license.
The license cannot be moved or recovered for a different system once used.

4. Confirm the Max I/O points if it's correct according to your KEY.

License type: Digital Certification

Max I/O Point: 1500

Max Links: 16



Reference:

N/A

