

# SNMP-Manageable Chassis

– for “iMcV” Series Modular Media Converters  
iMediaChassis/6 series

**B+B SMARTWORX**

Powered by

**ADVANTECH**

[www.advantech-bb.com](http://www.advantech-bb.com)



## PRODUCT FEATURES

- 6-slot supporting low to high density deployment
- Install wide varieties of B+B SmartWorx media conversion and optical demarcation modules
- SNMP management using optional SNMP management module
- 19" rack or rack shelf mountable
- 6-slot chassis - select any combination of up to two AC and DC fixed power supplies - available in single or dual AC; in single or dual DC
- Fan test featured on 6-slot chassis

The iMediaChassis/6 is an intelligent, carrier-class optical access platform that supports conversion of Ethernet to fiber and a variety of other telco networking technologies, including VDSL, T1/E1, DS3/E3/STS-1. The iMediaChassis/6 enables network operators to drastically reduce the capital and operational expenses by providing all copper-to-fiber and multi-mode to single-mode conversions, network distance extensions and Ethernet Private Line services from the same managed chassis platform.

Having the highest port density in the industry - along with a robust design, hot-swappable architecture, SNMP management, and redundant power supplies for fault tolerance - makes the iMediaChassis ideal for installing in the Central Office (CO) where a multitude of diverse applications, using a variety of protocols, is required. Pair this multi-slot chassis with a MediaChassis or other standalone B+B SmartWorx unmanaged device at the customer premises, for complete end-to-end management.

- An independent SNMP management slot to manage, configure and monitor all "iMcV" modules in a chassis with free management software
- Temperature controlled fans in the 6-slot chassis activates only when chassis reaches a certain temperature, thereby extending the life of the fans

## ORDERING INFORMATION

MODEL NUMBER	DESCRIPTION
iMediaChassis/6 *	
850-10953-AC	Includes 1 AC power supply module with option for 2nd power supply
850-10953-2AC	Includes 2 AC power supply modules
850-10953-DC	Includes 1 DC power supply module with option for 2nd power supply
850-10953-2DC	Includes 2 power supply modules

\*An SNMP module is required to utilize full SNMP functionality in the iMediaChassis family.

## ACCESSORIES

**806-39125-AC** – Power Supply, 125-AC Module (125 Watt, 100-240V DC)

**806-39125-DC** – Power Supply, 125-DC Module (125 Watt, 48V DC)

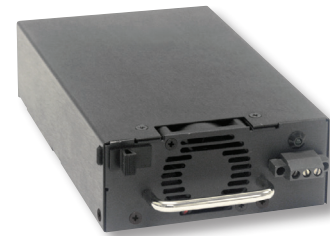
**850-39950** – iMediaChassis SNMP Management Module



Webserver Version iView<sup>2</sup> - free download from website.



SNMP module (optional)  
# 850-39950



Power Supply,  
Optional

All product specifications are subject to change without notice.  
iMediaChassis/6\_3517ds

# SNMP-Manageable Chassis

## - for "iMcV" Series Modular Media Converters

### iMediaChassis/6 series



#### SPECIFICATIONS

TECHNICAL
SNMP manageable with use of SNMP module
SNMP Write Lock switch protects the SNMP configured settings
Last Gasp feature sends notification of AC line failures and power supply failures
Available with AC or DC power
Available with redundant power
Only 1U high
True load sharing with dual, end-user replaceable power supplies
Temperature controlled fans
MIB:
Port Type
Fan Speeds
Traps
Fiber Type
Module Type
Link Status of Ports
Chassis temperature
Power Supply Type/Status
User-Definable Name/ID of Product and Each Port
Enable/Disable Ports
Enable/Disable FO/FX LinkLoss, TP/TX LinkLoss
Enable/Disable FiberAlert, Auto Negotiation

MECHANICAL	
Dimensions	4.57H x 48.26W x 27.05D cm (1.8H x 19W x 10.65D inches)
Shipping Weight	5.90 kg (13 lbs)
AC INPUT LOAD:	
	100 to 240V AC, 50 to 60Hz, 1.0A
DC INPUT LOAD:	
	48V DC, 2.0 A
ENVIRONMENTAL	
Operating Temperature:	0° to +50° C (+32° to +122° F)
Storage Temperature:	-20° to +80° C (-4° to +176° F): Dual AC, AC/DC -20° to +60° C (-4° to +140° F): Dual DC
Operating Humidity	5 to 95% (non-condensing), 0 to 10,000 ft. altitude
REGULATORY APPROVALS	
Single AC:	FCC Class A
Dual AC:	FCC Class A
Single DC:	FCC Class B
Dual DC:	FCC Class B
UL/cUL, CSA, CE	
UL (Environmental) - "Equipment intended for installation in Restricted Access Location."	
Applies when this device is installed in an area where the ambient temperature is above 40 °C.	
MEANTIME BEFORE FAILURE (MTBF)	
MTBF	Dual AC: 865320 hours Dual DC: 865320 hours

#### MECHANICAL DIAGRAM

(dimensions in inches)

