

UNO Smart Industrial Edge PC & Gateway

Models C-UNO2271-W10EDG-1, C-UNO2271-2

B+B SMARTWORX

Powered by

ADVANTECH

www.advantech-bb.com



- + World's smallest pre-configured, fanless, ruggedized, embedded computer on the market
- + Cost-effective way to extend data collection, visualization and system maintenance to the network edge
- + Acts as mini-hub connecting different brands, models, platforms and communicates in a single MQTT Spark Plug-B protocol
- + Scalable pocket, manufacturing data gateway

KEY SPECIFICATIONS

- Small form factor - less than 4 inches wide (<10.2cm)
- Intel® Atom™ E3815 1.4 GHz processor
- 4 GB DDR3L
- Ethernet port 2 x GbE, 1 x USB 3.0, 1 x HDMI
- Built-in 32G eMMC storage or with 128G mSATA SSD
- Windows 10 ENT LTSB (Model C-UNO2271-W10EDG-1)
- Ignition Edge™ MQTT software



The UNO (C-UNO2271-x) Series is a Smart Industrial Edge Gateway that is both rugged and pocket-size at less than 4 inches wide, making it an ideal host for application software. The fan-less, industrial design makes it perfect for both business and mission critical applications. With the UNO Edge Gateway, you can easily extend your data collection, visualization and system management to the edge of the network – all while keeping costs down. UNO acts as a mini hub that connects various brands, models and platforms and communicates data with a single MQTT Spark Plus-B protocol.

Model C-UNO2271-W10EDG-1 is available with Windows 10 ENT LTSB, 128G mSATA SSD and comes with Ignition Edge Onboard.

Model C-UNO2271-2 ships without an operating system, making it ideal for installing custom Linux versions.

ORDERING INFORMATION

MODEL NUMBER	DESCRIPTION
C-UNO2271-W10EDG-1	Atom E3815, 32G eMMC, Win 10 ENT, 128G mSATA Ignition Edge Software onboard with MQTT transmission
C-UNO2271-2	Atom E3815, 32G eMMC, 128G mSATA (no software)

ACCESSORIES - sold separately

- 96PSA-A120W24T2 - ADP A/D 100-240V 120W 24V C14 Cord End Terminal
- 1702002600 - Power Cable US Plug 1.8 m (industrial grade)
- 1702002605 - Power Cable EU Plug 1.8 m (industrial grade)
- 1702031801 - Power Cable UK Plug 1.8 m (industrial grade)
- 1700000596 - Power Cable China/Australia Plug 1.8 m (industrial grade)
- UNO-2271G-EKAE - UNO-2271G Expansion ME Kit
- UNO-2271G-DMKAE - UNO-2271G DIN Rail Kit
- UNO-2000G-VMKAE - UNO-2000 VESA Mount Kit
- UNO-2000G-PMKAE - UNO-2000 Pole Mount Kit
- UNO-2271G-LKAE - UNO-2271G Lockable Kit, 10 units/per pack



WIDE RANGE PWR INPUT 10~36V

Wide range power input ensures normal operation in unstable power environments.



CABLE-LESS DESIGN

Cable-less design for internal space saving, enhanced MTBF, reliability of signal transition, and cost efficiency for assembly.



RUBBER STOPPER DESIGN WITH CAPTIVE SCREW

Modular box uses captive screw design to prevent screw loss during assembly and rubber stoppers provide better system stability.



VERSATILE MOUNTING

Variety of mounting methods -VESA, DIN rail, Pole, and Stand-mount.

All product specifications are subject to change without notice.

C-UNO2271-x_1518ds

B+B SMARTWORX

Powered by

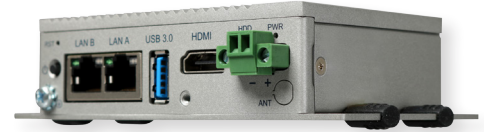
ADVANTECH

orders@advantech-bb.com
support@advantech-bb.com

Corporate Headquarters: 707 Dayton Road, PO Box 1040 Ottawa, IL 61350 USA 815-433-5100 Fax 433-5104
European Office: Westlink Commercial Park, Oranmore Co. Galway Ireland +353 91 792444 Fax +353 91 792445

UNO Smart Industrial Edge PC & Gateway

Models C-UNO2271-W10EDG-1, C-UNO2271-2



SPECIFICATIONS

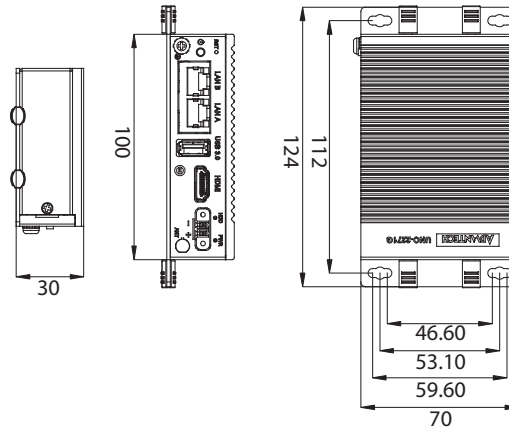
GENERAL	
Certification	CE, FCC, UL, CCC, BSMI
Dimensions	100W x 70D x 30H mm (3.9W x 2.8D x 1.2H inches)
Form Factor	Pocket size, same dimension as standard 2.5 inch SSD/HD
Enclosure	Aluminum housing
Mounting	Stand, Wall, VESA (optional), DIN-rail (optional), Pole (optional)
Weight (net)	0.6 kg (1.32 lbs)
Power Requirement	10 ~ 30VDC
Power Consumption	12W (typical), 20W (maximum)
OS Support	For mSATA Storage: Windows7, Windows10 LTSB, Advantech Linux. For eMMC Storage: Advantech embedded customized Windows 10 LTSB, Advantech Linux
SYSTEM HARDWARE	
BIOS	AMI EFI64 Mbit
Watchdog Timer	Programmable 256 levels timer interval, from 1 to 255 seconds. Interrupt, system reset.
Processor	Intel Atom E3815 1.46GHz (E3825 support by project)
System Chip	Intel Atom SoC integrated
Memory	Onboard 4GB DDR3L 1066 MHz, built-in
Graphics Engine	Intel® HD graphics
Ethernet	Realtek RTL8111E GbE, 802.10av
LED Indicators	LEDs for Power, HDD, LAN (Active, Status)
Storage	Onboard 32G eMMC (Option 128G mSATA)
Expansion	1 x Full-size mPCIe slot

SPECIFICATIONS - continued

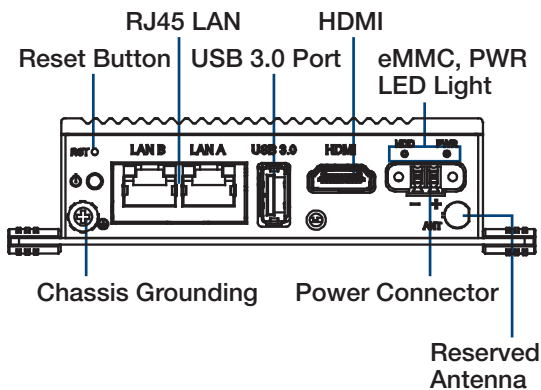
I/O INTERFACES	
LAN Ports	2 x RJ45, 10/100/1000 Mbps IEEE 802.3u 1000Base-T Fast Ethernet
USB Ports	1 x USB 3.0
Displays	1 x HDMI, supports 1920 x 1080 @ 60Hz
Power Connector	1 x 2 pins, Terminal block
Grounding Protection	Chassis grounding
ENVIRONMENT	
Operating Temperature	0 ~ +50 °C (+32 ~ +122 °F) @ 5 ~ 85% RH with 0.7 m/s airflow
Storage Temperature	-20 ~ +70 °C (-4 ~ +158 °F)
Relative Humidity	10 ~ 95% RH @ 40°C, non-condensing
Shock Protection	Operating, IEC 60068-2-27, 50G, half sine, 11 ms
Vibration Protection	Operating, IEC 60068-2-64, 2 Grms, random, 5 ~ 500 Hz, 1hr/axis (mSATA)
Ingress Protection	IP30

MECHANICAL - DIMENSIONAL DRAWING

Units = mm

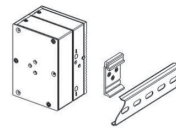


FRONT I/O VIEW

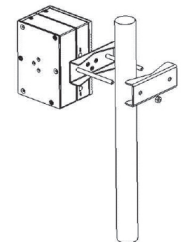


MOUNTING OPTIONS

DIN-rail Mount Illustration



Pole Mount Illustration



VESA Mount Illustration

