

Advantech SE Technical Share Document

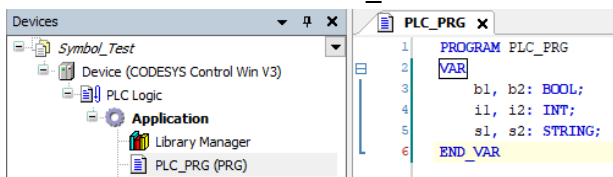
Date	2019 / 03/ 23		Related Product	CODESYS
Category	<input type="checkbox"/> FAQ <input checked="" type="checkbox"/> SOP <input type="checkbox"/> Driver Tech Note			
Abstract	How to make variable as symbol in CODESYS?			
Keyword	Symbol, CODESYS			
Related OS	Windows			
Revision History				
Date	Version	Author	Reviewer	Description
2020/03/23	V1.0	Owen.Chang	Nick.Liu	CODESYS SP15

■ **Problem Description & Architecture:**

This FAQ shows how to make variable as symbol in CODESYS.

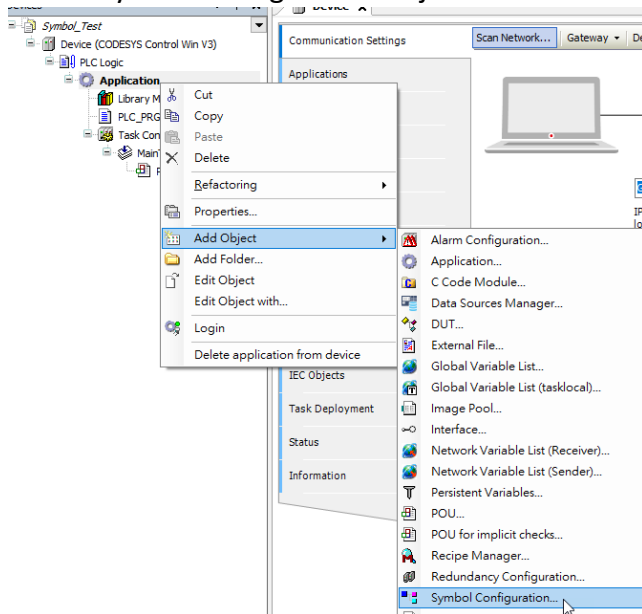
■ **Brief Solution - Step by Step:**

1. Create some variable in PLC_PRG.

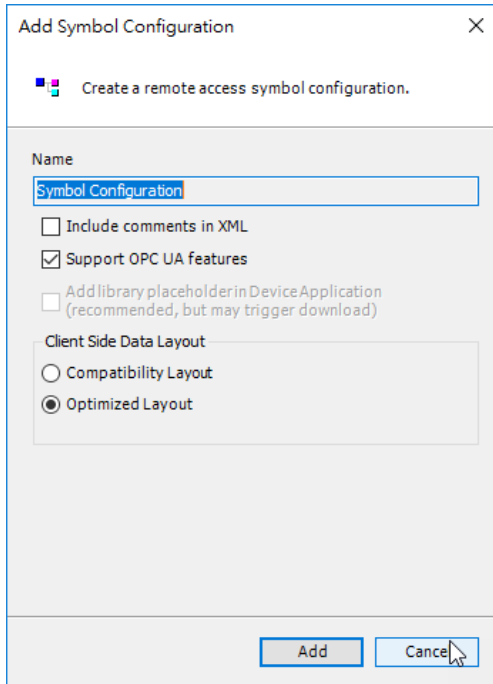


2. Select the Application object in the device tree.
3. Click Project ► Add Object ► Symbol Configuration .

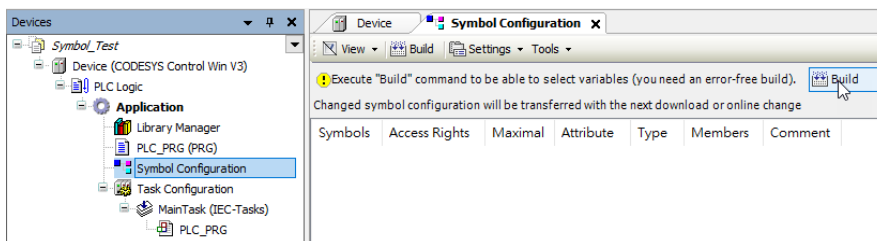
⇒ The Symbol Configuration object is added to the device tree and the objects editor opens.



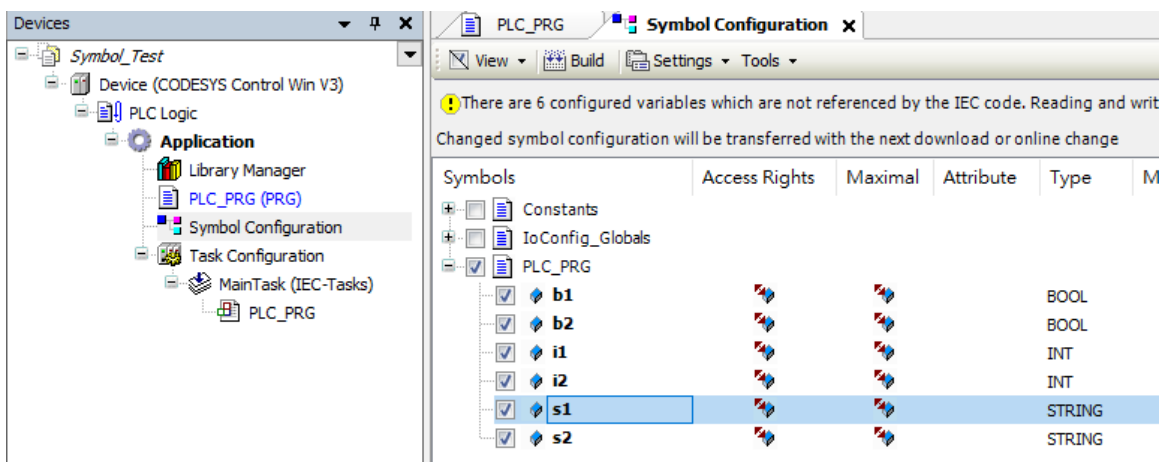
Click Support OPC UA feature if necessary.



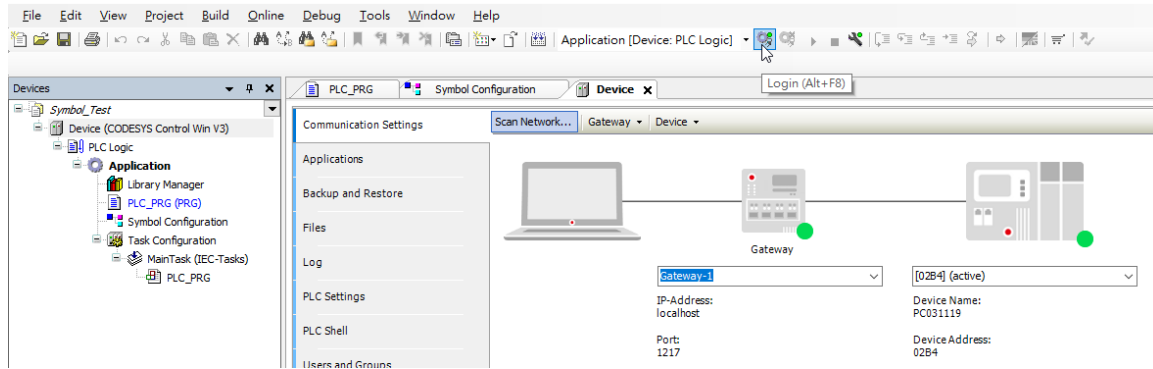
- Open the View menu of the editor and activate the categories of variables that should be provided in the configuration editor. Click Build in the symbol configuration editor.
 ⇒ All variables (according to the currently defined filter in the View menu) are displayed in a tree structure.



- Select the check boxes of individual variables.
 Note: Pay attention to the current settings (see the Settings button in the menu bar of the editor).
 ⇒ In the field below the menu bar of the editor, information is provided about the current situation with accompanying instructions, as well as controls for corrective actions.



6. Download the project to RTE and run.



Reference:

https://help.codesys.com/webapp/cds_symbolconfiguration;product=codesys;version=3.5.15.0