

Advantech SE Technical Share Document

Date	2020 / 03 / 20	Related Product	WOP-2000T series	
Category	<input type="checkbox"/> FAQ <input type="checkbox"/> SOP <input checked="" type="checkbox"/> Driver Tech Note		WebAccess/HMI Runtime	
Abstract	How to connect BACnet/MSTP device with the WebAccess/HMI.			
Keyword	WOP-2000 Series WebAccess/HMI Runtime			
Related OS				
Revision History				
Date	Version	Author	Reviewer	Description
2020/03/20	V1.0	Black Chang	Nick Liu	WA/HMI V2.1.9.31

■ **Problem Description & Architecture:**

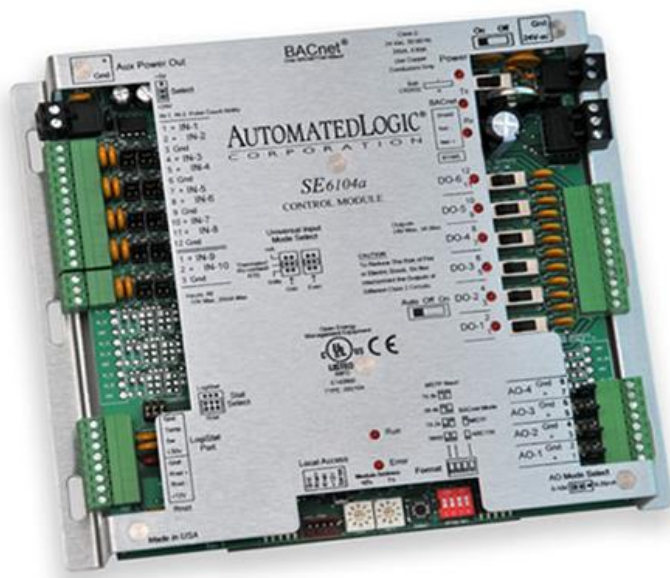
How to connect BACnet/MSTP device with the WebAccess/HMI.

■ **Brief Solution - Step by Step:**

This document illustrates the way to link the controller correctly and the note of related installation when using HMI.

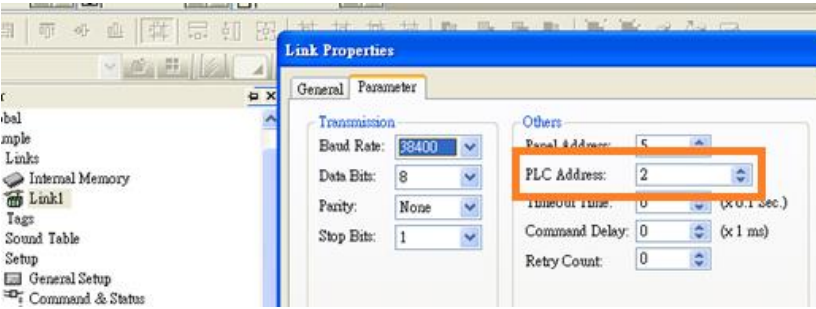
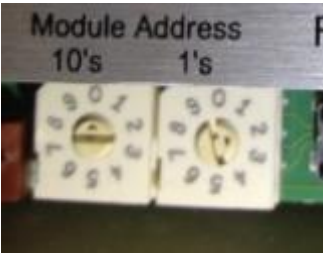
BACnet/MSTP device setting:

Apply to BACnet/MSTP, this document use SE6104a Controller for test.



(1) Module Address setting:

To adjust address switch (Note: PLC address is the hardware ID of BACnet equipment, not software ID.)

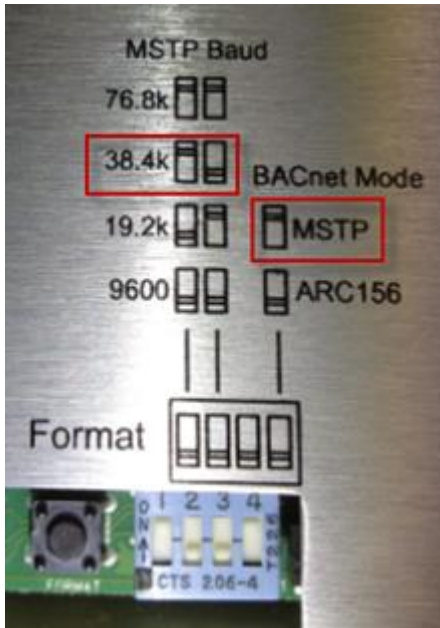


(2) Format setting:

Set DIP according to each brand of machine

Baud rate: 38400 (according to the setting of actual use)

Mode: MSTP



HMI Settings:

1. Choose Device/Server Setting: Honeywell → BACnet/MSTP

Link Properties

General Parameter

Link Number:

Link Name:

Link Type:

Device/Server:

Link Port: Sub-links

Record communication status in operation log

The duration of showing a communication error message: second(s)

確定 取消 說明

Communication Setting: (according to hardware switch)

Link Properties

General Parameter

Transmission

Baud Rate:

Data Bits:

Parity:

Stop Bits:

Others

Panel Address:

PLC Address:

Timeout Time: (x 0.1 Sec.)

Command Delay: (x 1 ms)

Retry Count:

確定 取消 說明

PLC Address List

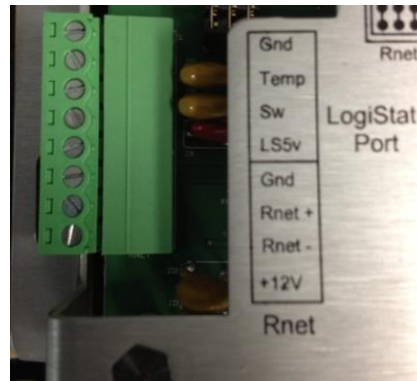
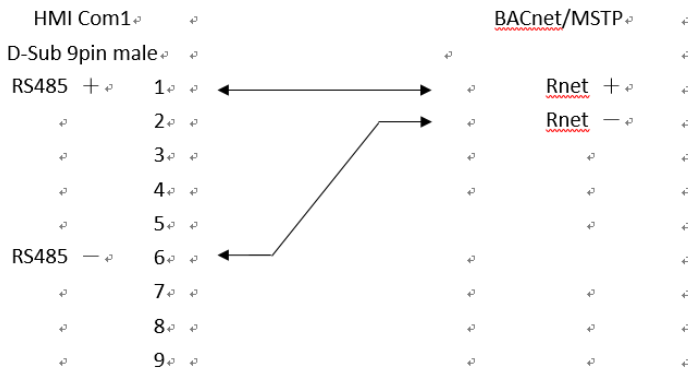
Bit Device:

Bit Device	Address Range	Block Address	Comm
BIn	n: 0~65535	N/A	
BOn	n: 0~65535	N/A	
BVn	n: 0~65535	N/A	

Word Device:

Word Device	Address Range	Size	Comment
Aln	n: 0~65535	32 bits	
AO n	n: 0~65535	32 bits	
AV n	n: 0~65535	32 bits	

Pin Definition (in case of serial connection):



Reference: