

Advantech SE Technical Share Document

Date	2021 / 09 / 13	Related Product	WebAccess, http, https, port	
Category	<input checked="" type="checkbox"/> FAQ <input type="checkbox"/> SOP <input type="checkbox"/> Driver Tech Note			
Abstract	如何把WebAccess預設port 改成其它 port			
Keyword	WebAccess, http, https, port			
Related OS				
Revision History				
Date	Version	Author	Reviewer	Description
2021/09/13	V1.0	Jimmy.Lee	Nick.Liu	9.0.0 or Later.

■ **Problem Description & Architecture:**

如何把WebAccess預設port改成其它port。

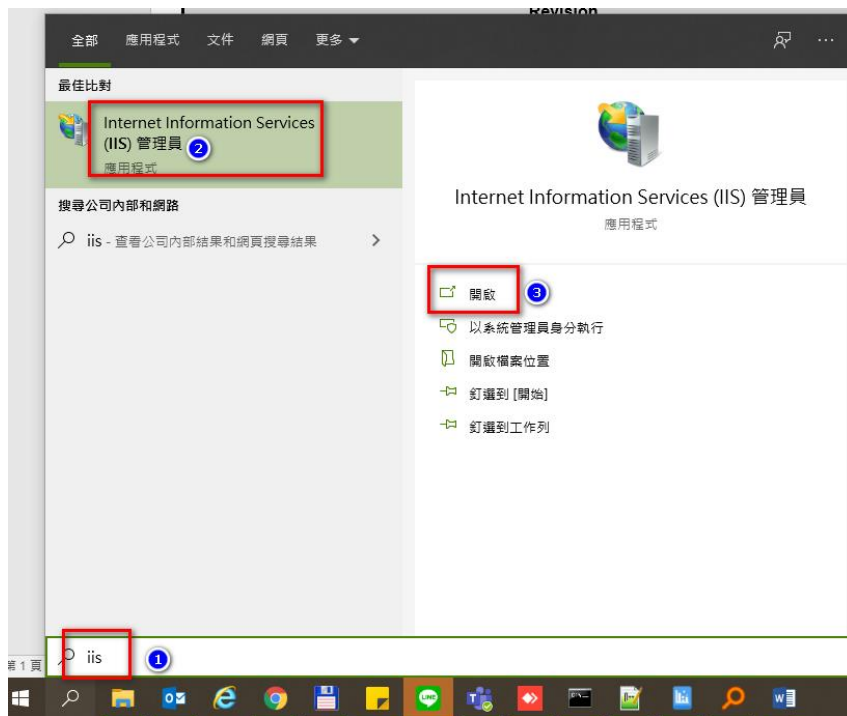
(本篇涵蓋 Http , Htpps , Dashboard Server , Dashboard data source)

■ **Brief Solution - Step by Step:**

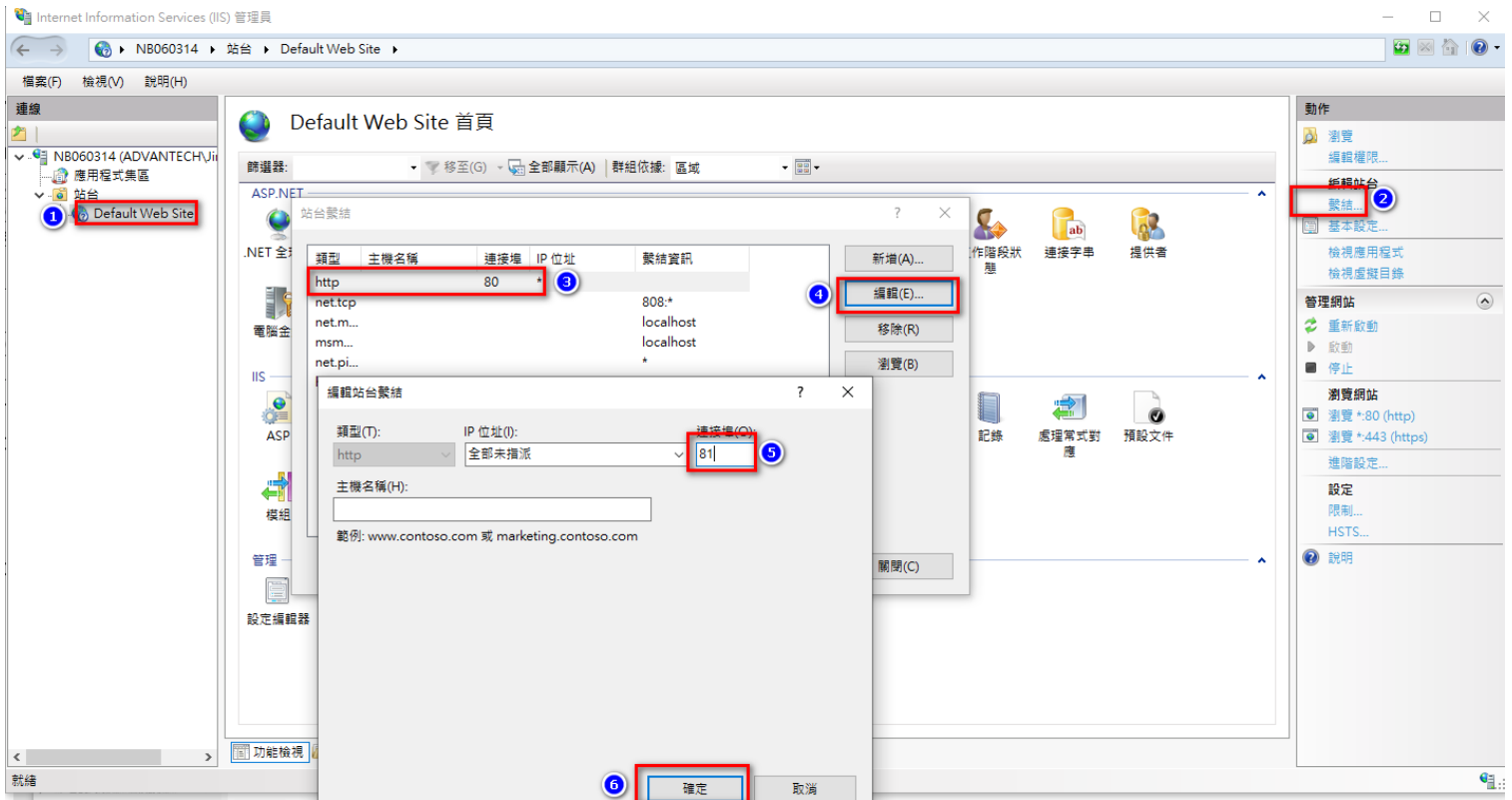
1 HTTP&HTTPS

修改IIS設定

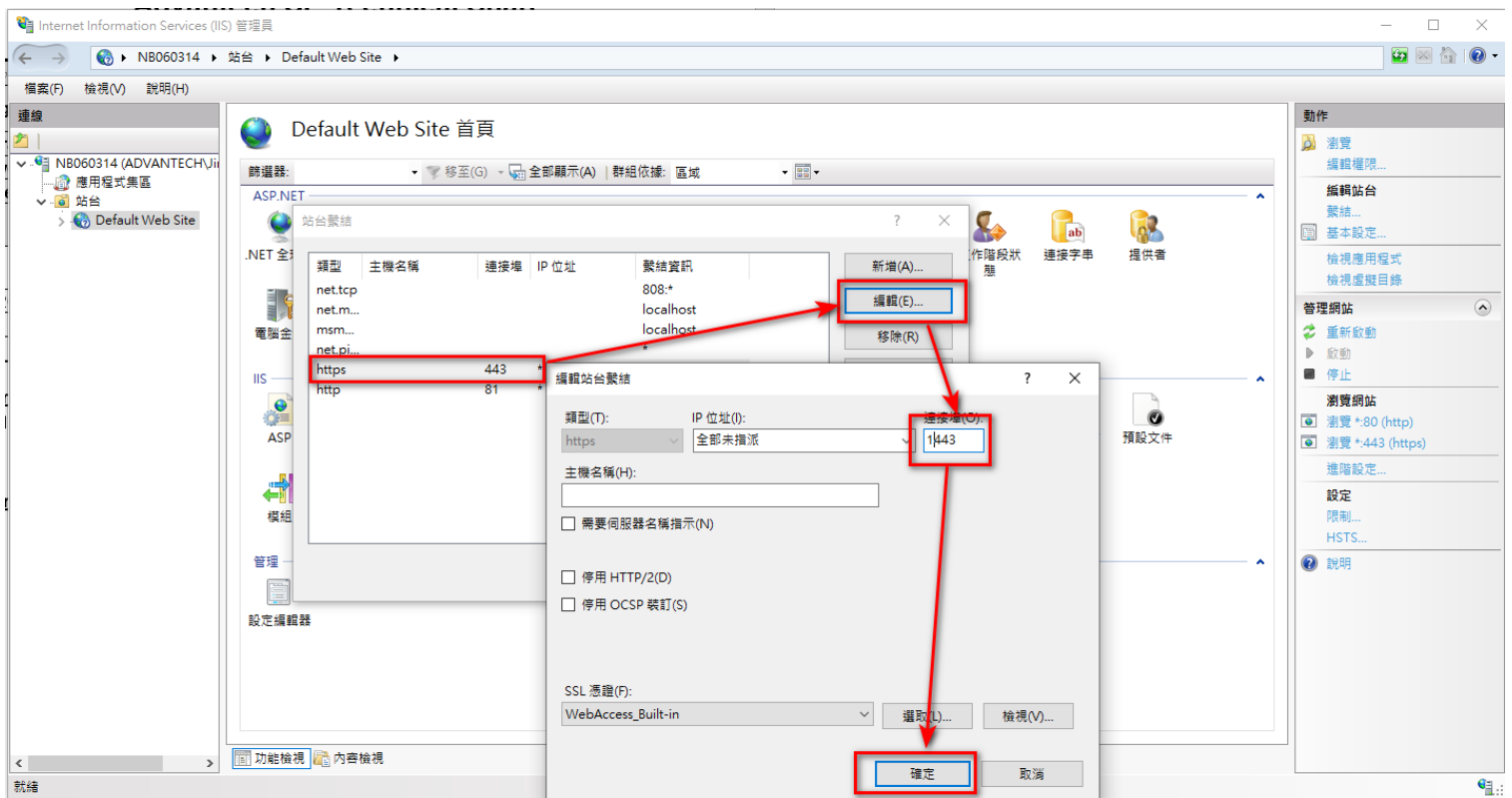
Windows 搜尋→ IIS→IIS管理員→開啟



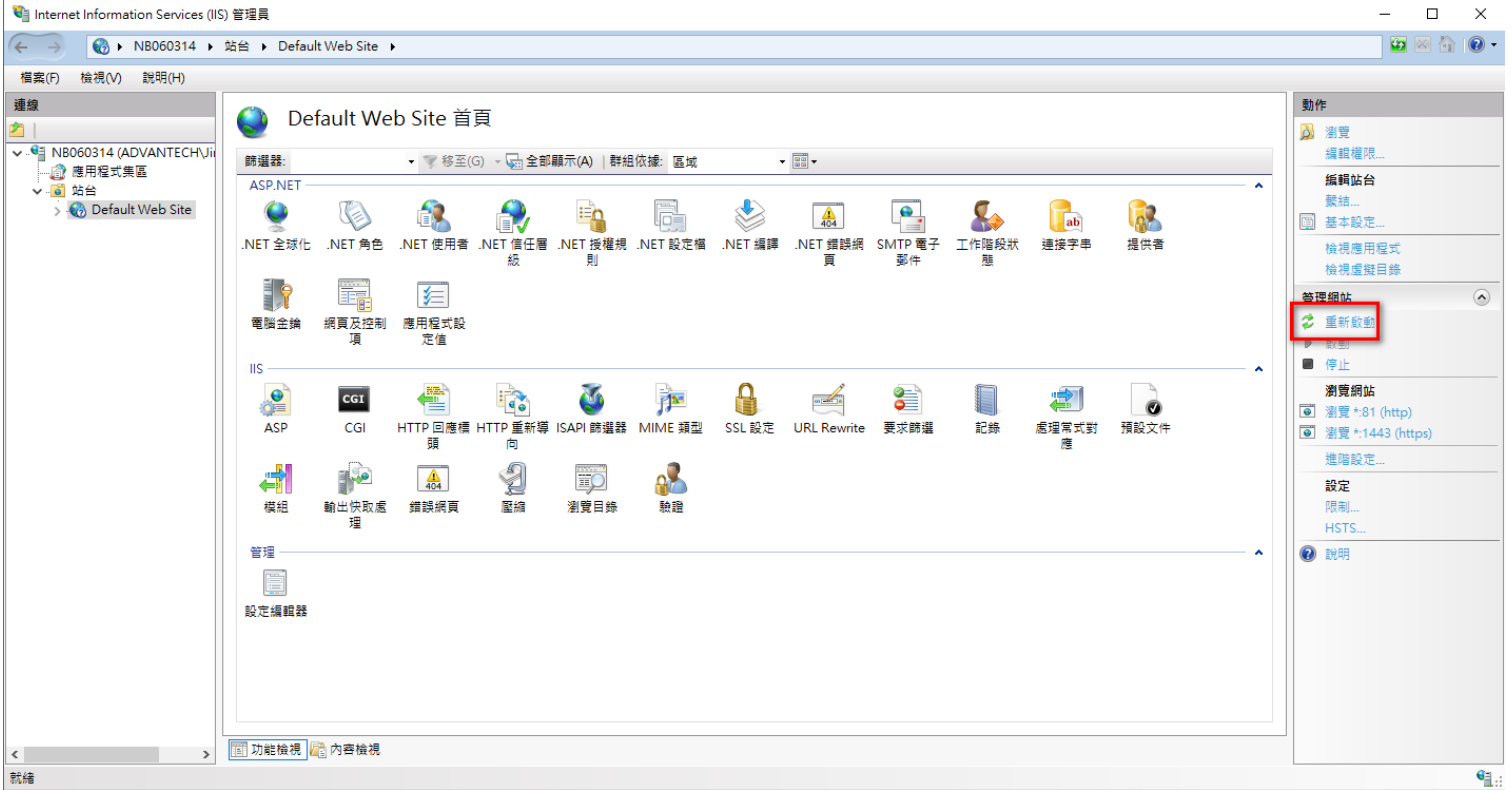
IIS中選Default Web Site → 繫結 → http → 編輯 →
將連結埠改為需要的號碼 → 確定



如果要改Https
https → 編輯 →
將連結埠改為需要的號碼 → 確定



改完後需要重新啟動IIS



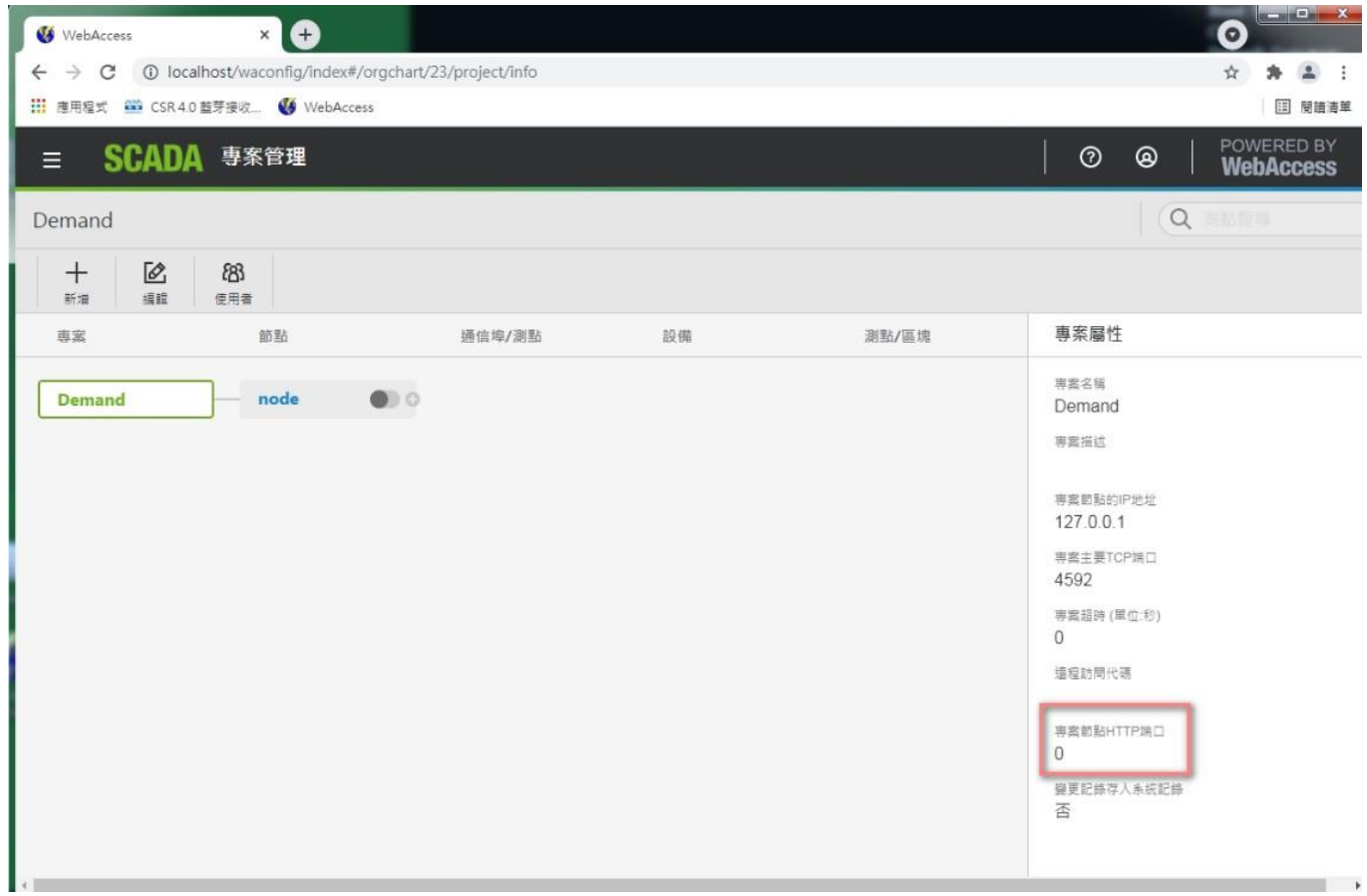
2 用剛才改的http埠進工程首頁,

例如剛才改 81

就要用<http://127.0.0.1:81>進工程首頁,

然後修改工程節點的 **專案節點HTTP端口**

再下載專案



3 如果要改 Local WISE-PaaS Dashboard 預設埠

修改 \WebAccess\Node\WISE-PaaS_Dashboard\WISE-PaaS_Dashboard\conf\defaults.ini 裡面的 `http_port` 選項

E.g. 改成 port 3010

```
[server]
# Protocol (http, https,
protocol =https

# The ip address to bind
http_addr =

# The http port to use
http_port =3010
```

更改 WebAccess\Node\bwserver.ini 中 [grafana] 內的 port 選項

[grafana]

Port = 3010

```
[grafana]
user=admin
pwd=admin
port=3010
ifactory_license
```

用 Administrator 權限進入 DOS Mode, 執行 stop Dashboard 服務指令

net stop Dashboard

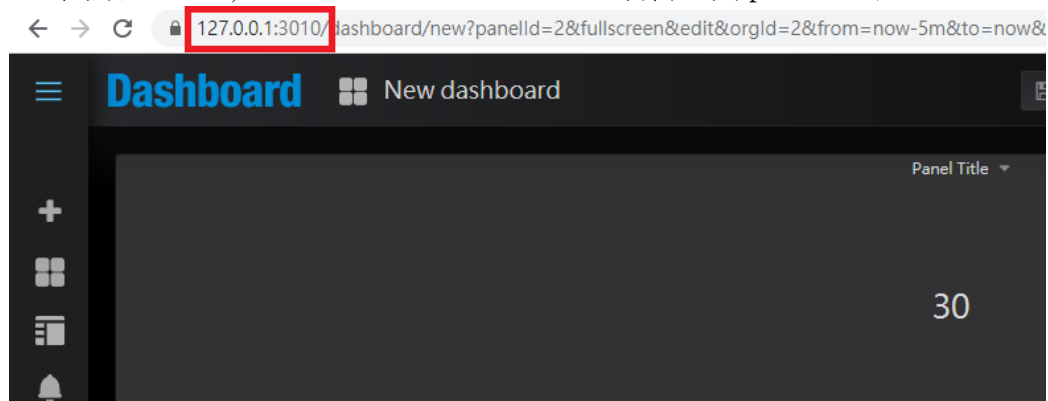
```
C:\Windows\system32>net stop Dashboard
Dashboard 服務已經成功停止。
```

Dashboard 服務停止後, 執行啟動 Dashboard 指令

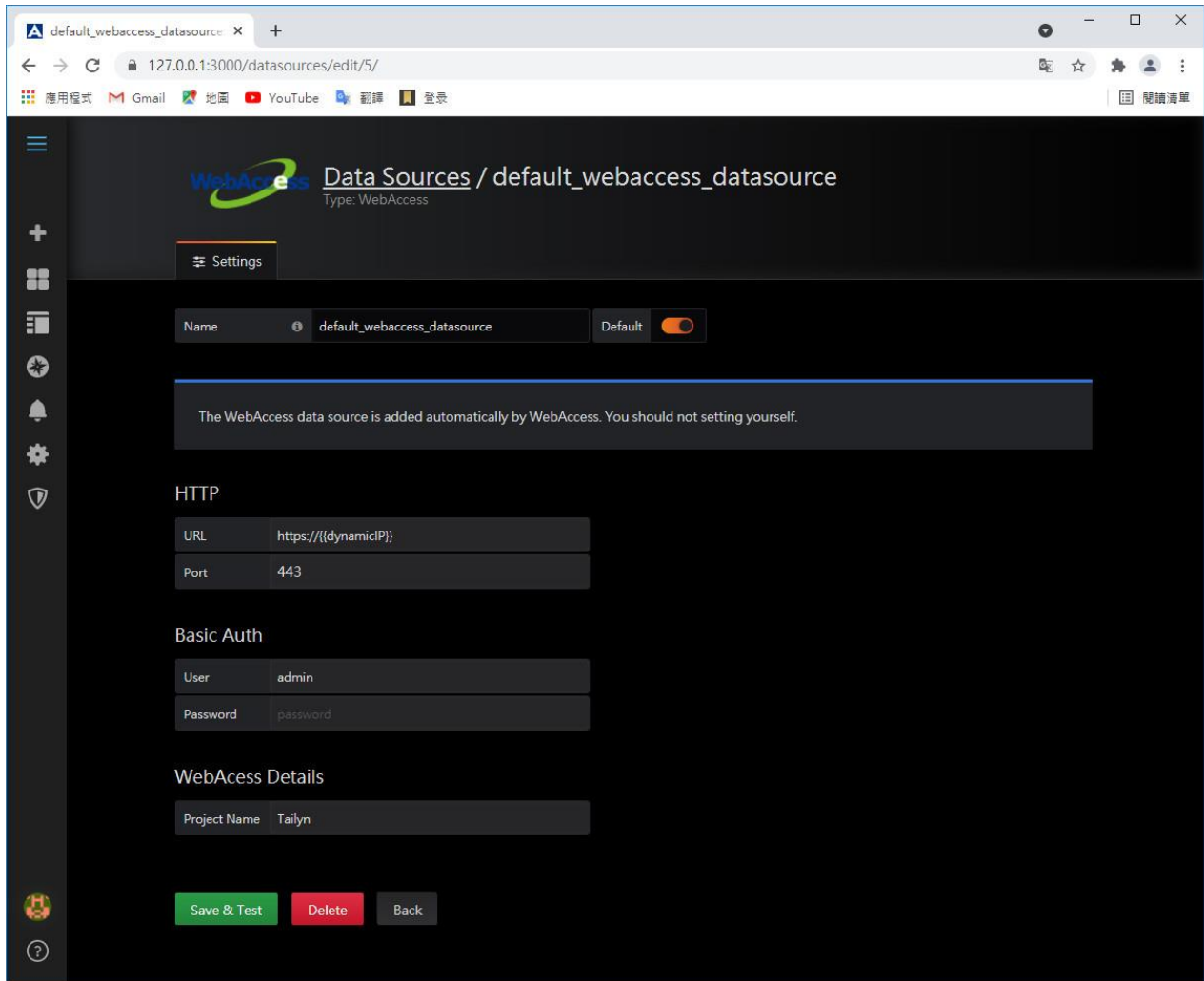
● net start Dashboard

```
C:\Windows\system32>net start Dashboard
```

開啟 Chrome, Local WISE-PaaS Dashboard 順利經由 port 3010 進入



4 如果要改 Local WISE-PaaS Dashboard WebAccess Data Source的預設埠



修改 \WebAccess\Node\bwclient.ini 裡面的
https 選項

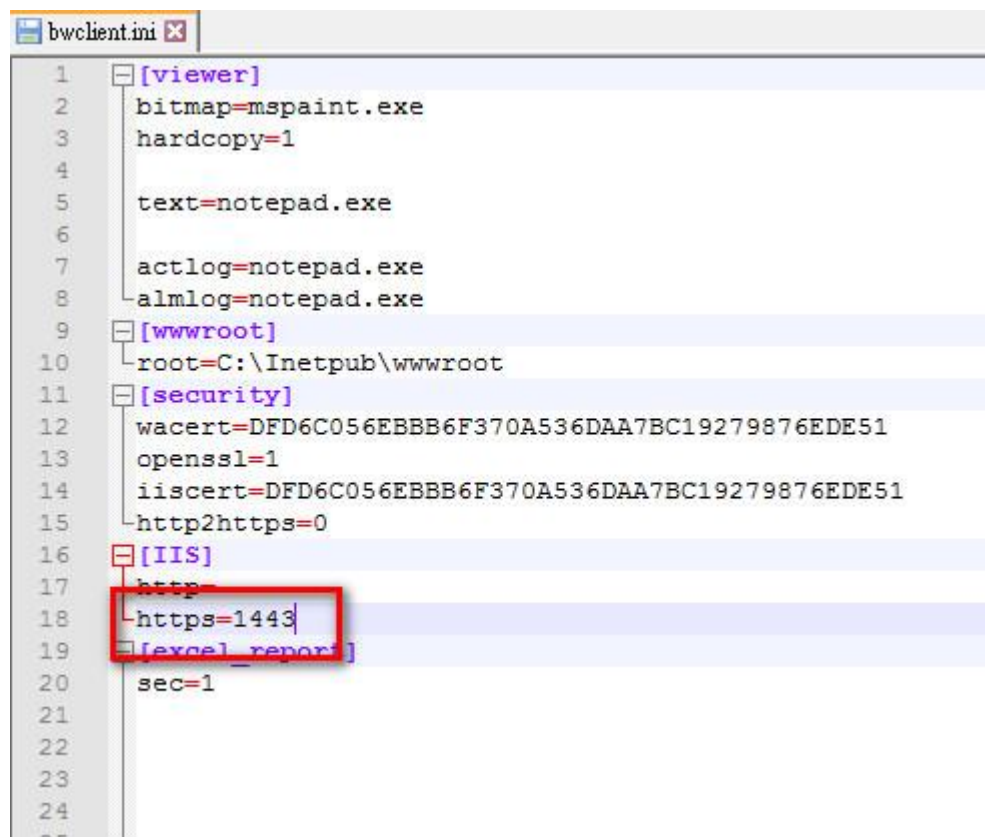
```

1  [viewer]
2  bitmap=mspaint.exe
3  hardcopy=1
4
5  text=notepad.exe
6
7  actlog=notepad.exe
8  almlog=notepad.exe
9  [wwwroot]
10 root=C:\Inetpub\wwwroot
11 [security]
12 wacert=DFD6C056EBBB6F370A536DAA7BC19279876EDE51
13 openssl=1
14 iiscert=DFD6C056EBBB6F370A536DAA7BC19279876EDE51
15 http2https=0
16 [IIS]
17 http=
18 https=
19 [excel_report]
20 sec=1
21
22
    
```

將 https=改為 https=你要改的埠號,例如 1443

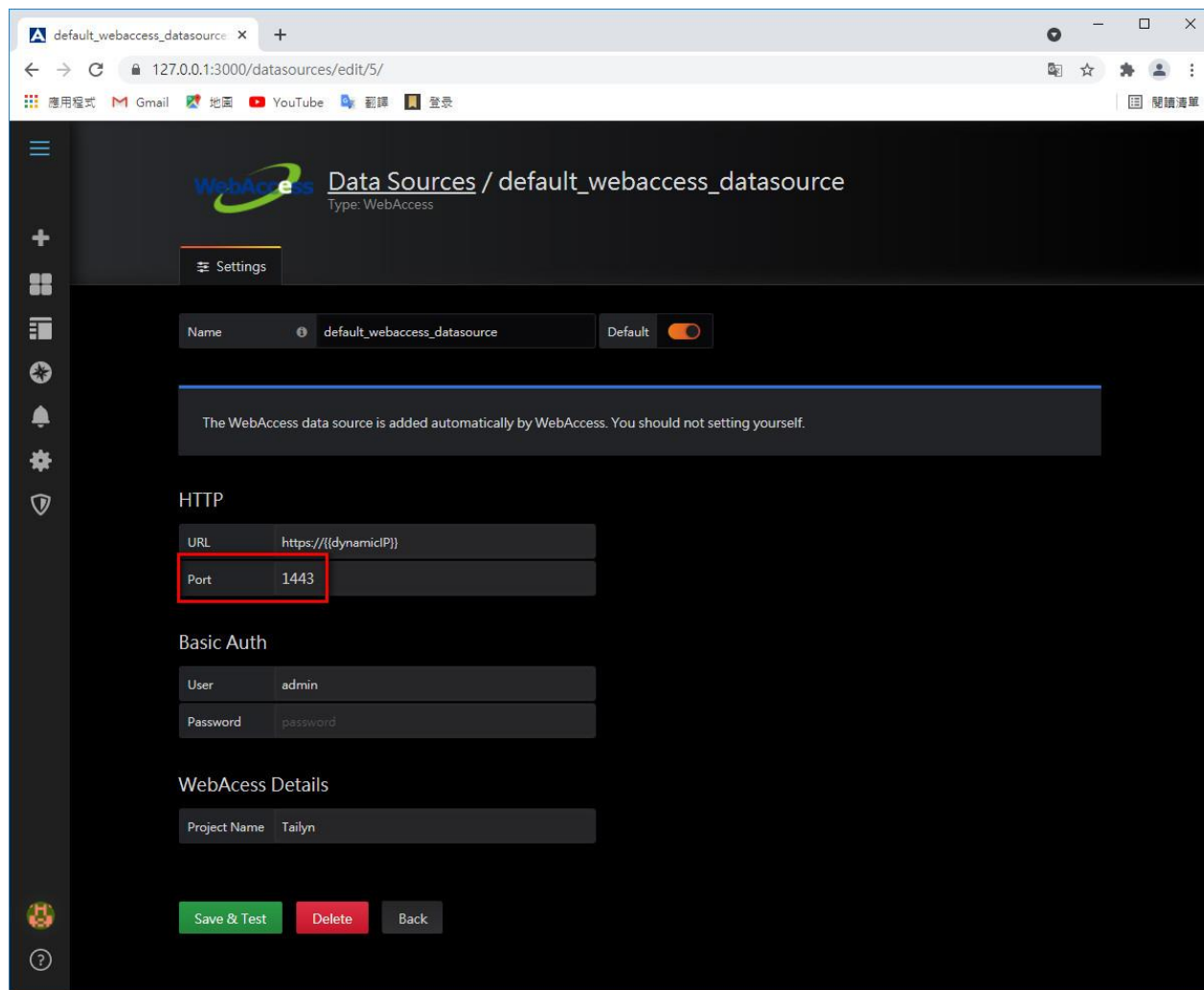
https=1443

注意: IIS 的 https 埠也要修改成同樣的埠號,請參考步驟 1



```
1 [viewer]
2   bitmap=mspaint.exe
3   hardcopy=1
4
5   text=notepad.exe
6
7   actlog=notepad.exe
8   almlog=notepad.exe
9 [wwwroot]
10  root=C:\Inetpub\wwwroot
11 [security]
12  wacert=DFD6C056EBBB6F370A536DAA7BC19279876EDE51
13  openssl=1
14  iiscert=DFD6C056EBBB6F370A536DAA7BC19279876EDE51
15  http2https=0
16 [IIS]
17  http=
18  https=1443
19 [excel_report]
20  sec=1
21
22
23
24
25
```

重開瀏覽器後,進入dashboard 可以看到已經被修改了



■ **Reference:**