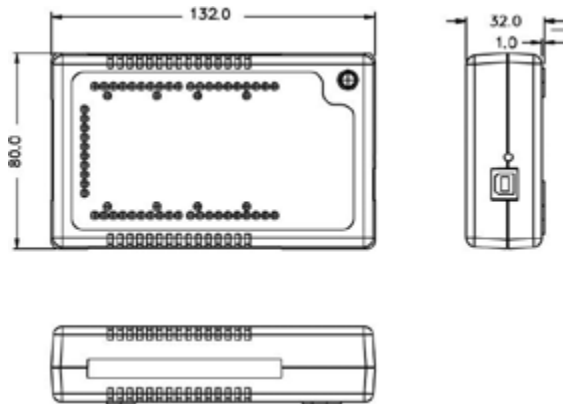


USB Installation Guide

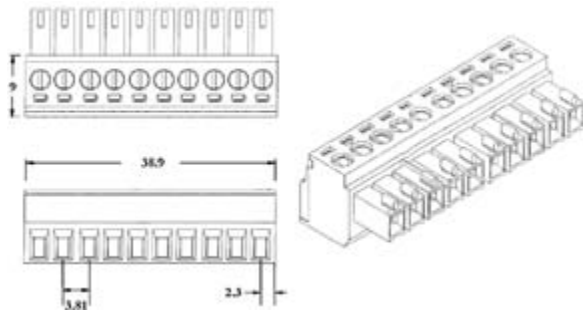
Advantech USB Data Acquisition (DAQ) Series Installation Guide

The unique design of Advantech's USB Data Acquisition (DAQ) Series can fulfill demands on secure connections between USB cables and the devices, as well as allow modules to be used with a variety of alternate mounting solutions. The following information will provide the necessary information and guide you through the basic operations of these kits.

Dimensions



(Device)



(Screw Terminal)

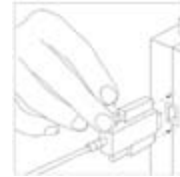
Removing the Casing

You may need to remove the modules' outer casing to access the jumpers inside the module. To remove the casing, you'll have to first remove the rubber padding covering the screws, and then remove the two screws holding the casing in place, as shown below.



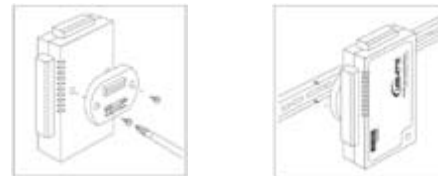
Attaching the Lockable USB Cable

Advantech USB DAQ series feature the lockable cable design to secure the device connection. To prevent the USB cable from being unplugged accidentally, please insert the cable into the module, and screw in the two fasteners as shown below.



Attaching the DIN-rail Bracket

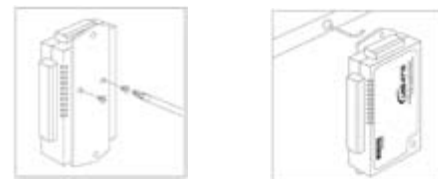
Advantech's USB DAQ modules come with a bracket that facilitates the industry standard DIN-rail mounting. To attach, simply place the bracket firmly on the back, and secure it by attaching the two screws into the holes as shown below.



***Note:** Every Advantech's USB data acquisition/hub module comes with a DIN-rail kit, except USB-4702.

Attaching the Wallmount Bracket (Optional)

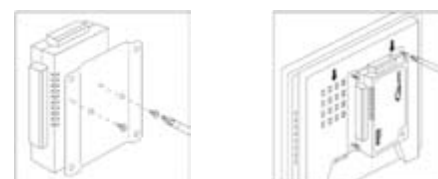
The wallmount kit can help you hang your modules on the wall or other flat surfaces. To attach the wallmount bracket, remove all 4 rubber pads on the rear of the module, and secure it by attaching the two screws into the holes as shown below.



Wallmount kit part number: 1960004544

Attaching a VESA Bracket (Optional)

Use the VESA bracket to mount your module to the VESA-ready appliances, such as Advantech's TPC series. To attach, remove all 4 rubber pads on the back, and secure it by attaching the two screws into the holes as shown below.



VESA bracket part number: 1960005788