

Advantech AE Technical Share Document

Date	2018/06/04	SR#	1-3465263991
Category	■FAQ □SOP	Related OS	N/A
Abstract	ADAM-5510KW, How to config IO of ADAM5510KW by ADAM APAX DotNet Utility?		
Keyword	IO Configuration		
Related Product	ADAM-5510KW/TCP, ADAM-5510EKW/TP		

■ **Problem Description:**

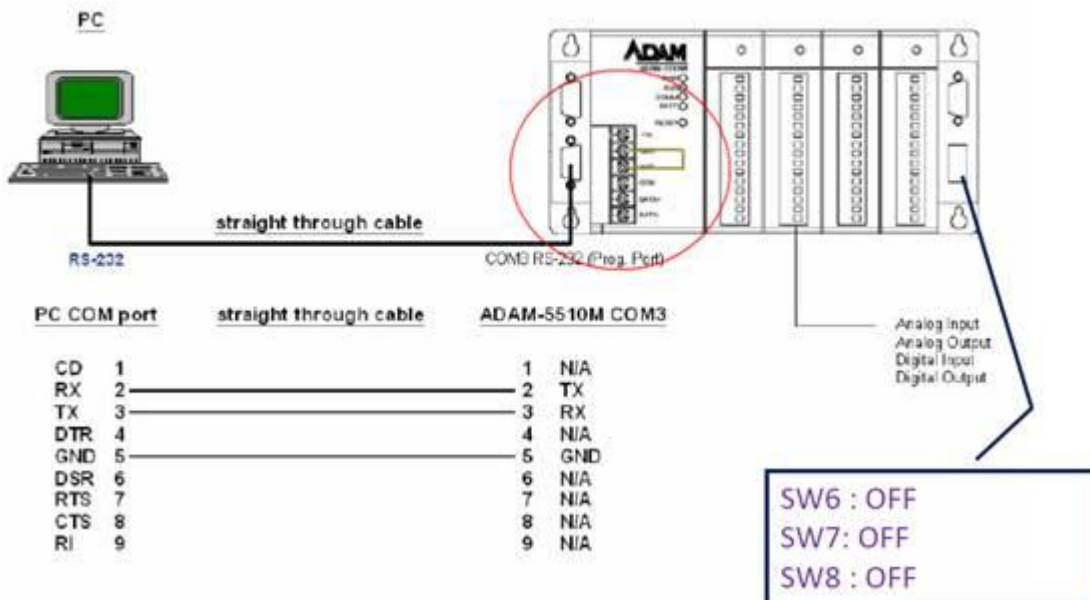
This document shows how to config IO of ADAM5510KW by ADAM APAX .Net Utility.

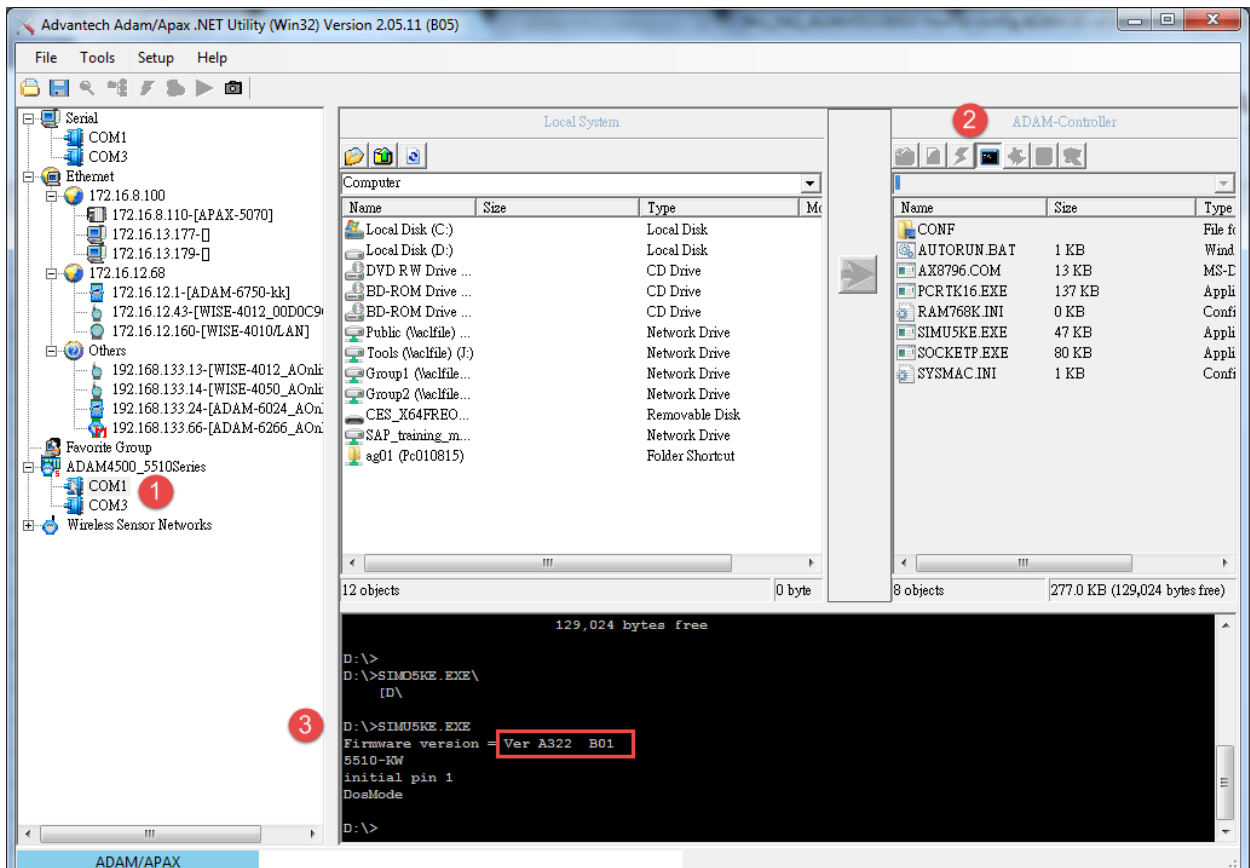
■ **Answer:**

There are two ways to config ADAM-IO. One is by KW. Another is by ADAM/APAX .Net Utility. This document will show the SOP to config IO of ADAM5510KW by ADAM APAX DotNet Utility.

1. Get Initial mode(Switch 6, 7, 8 **MUST** should be OFF): Make sure SIMU5KE.EXE is in ADAM-5510KW/TP and the version of it is above 1.21.

Prog. Mode (COM3)





2. Check the Jumper for COM1 is RS-232.

