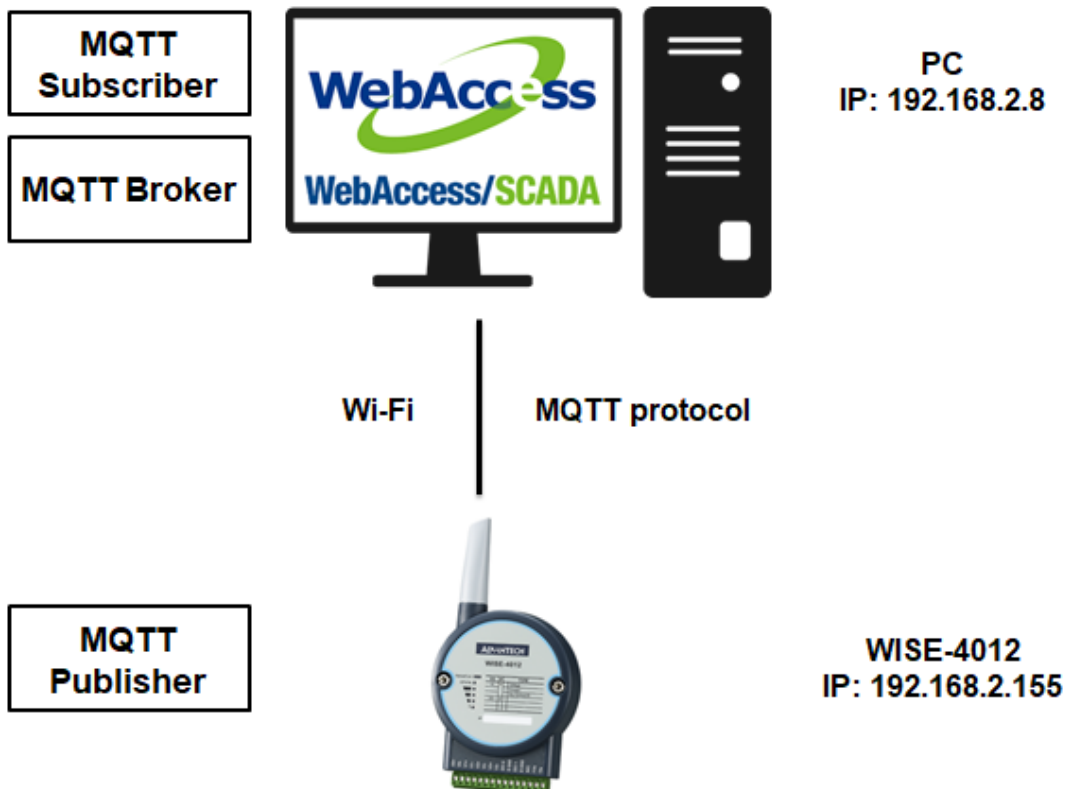


Advantech SE Technical Share Document

Date	2020 / 05 / 15	Related Product	WebAccess/SCADA	
Category	<input checked="" type="checkbox"/> FAQ <input type="checkbox"/> SOP <input type="checkbox"/> Driver Tech Note			
Abstract	Use WebAccess/SCADA connect to WISE-4012 with MQTT protocol			
Keyword	WebAccess, SCADA, WISE-4012, MQTT			
Related OS	Win 7, Win 10			
Revision History				
Date	Version	Author	Reviewer	Description
2020/05/15	V1.0	William.Lin	Nick.Liu	WebAccess v8.4.0

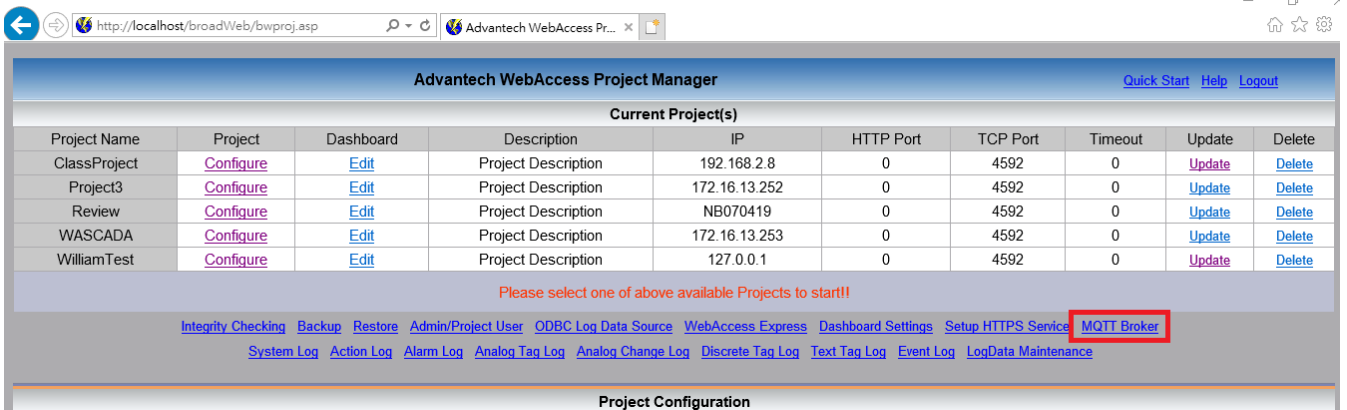
■ **Problem Description & Architecture:**

This FAQ describes how to Use WebAccess/SCADA connect to WISE-4012 with MQTT protocol.

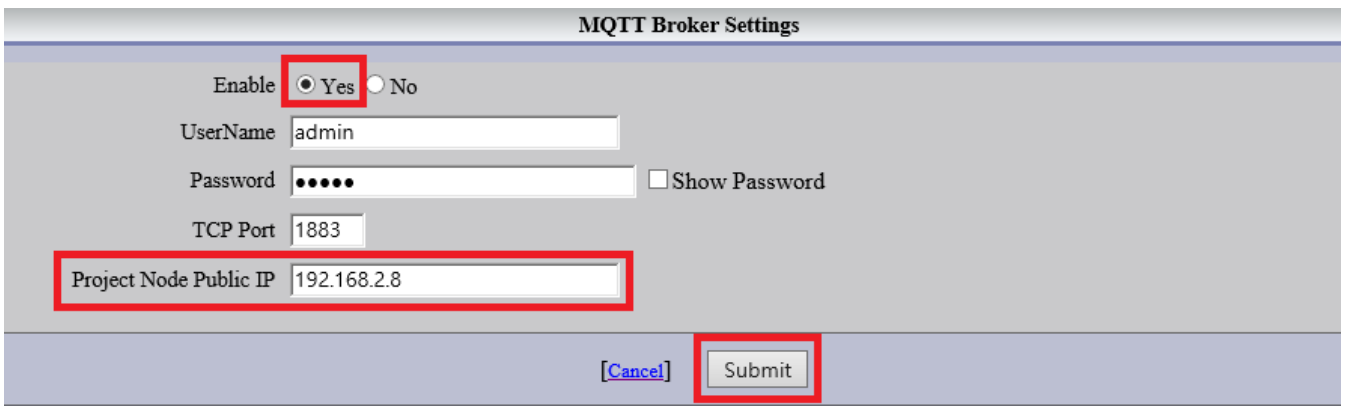


Brief Solution - Step by Step:

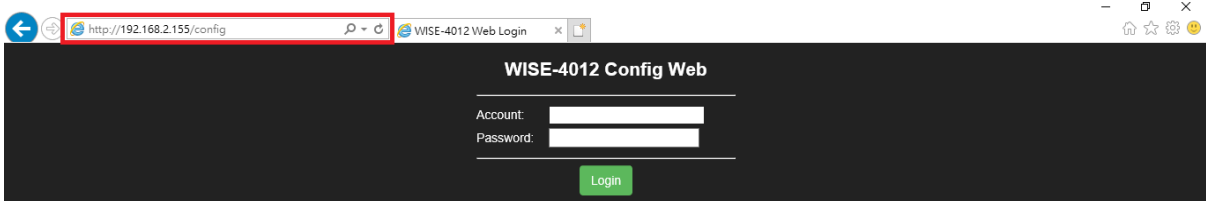
1. Go to project manager, and select MQTT Broker.



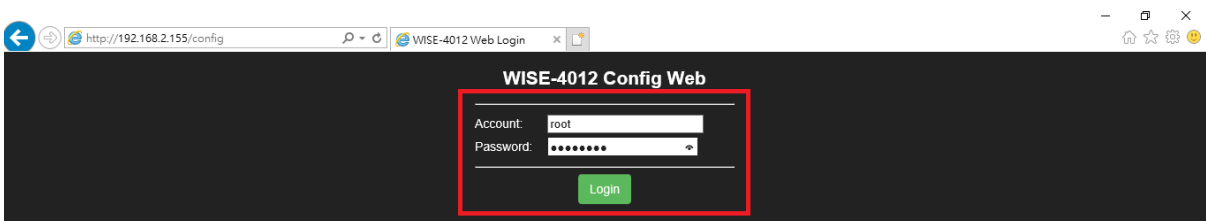
2. Select "Yes", and type the IP address of your computer.



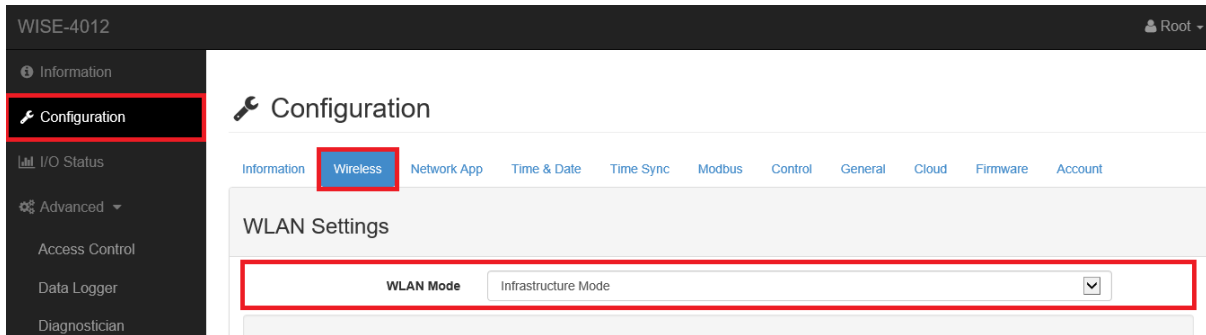
3. Go to WISE-4012 Web page. Enter the IP of WISE-4012, the default IP should be 192.168.1.1.



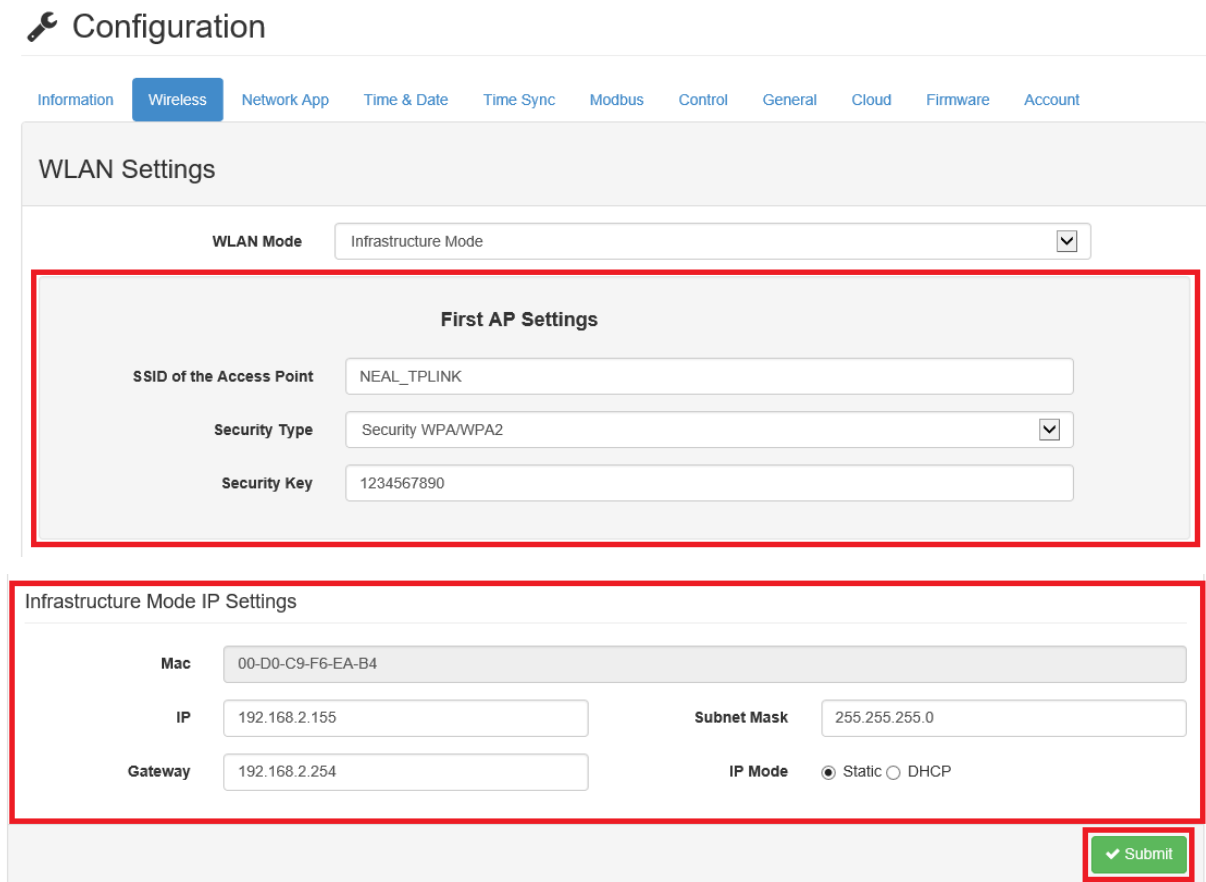
4. Enter the account and password, the default account and password should be root and 00000000, respectively.



5. Select "Configuration" => "Wireless" and change the WLAN setting to Infrastructure Mode.



6. Connect WISE-4012 to an accessible access point and set the IP with the same subnet. (192.168.2.155 in this example)



7. Select "Advanced" => "Data Logger" => "Data Configuration" => "WebAccess I/O Configuration", click both "Log Enabled" and "Access Enabled" on the channels you wish to measure on WebAccess/SCADA. The tag of these channels will be generated automatically on your SCADA node.

WISE-4012 Root

Information
Configuration
I/O Status
Advanced
Access Control
Data Logger
Diagnostician

Data Logger

Data Configuration | **Logger Configuration** | Local Data Query

I/O Configuration | **WebAccess I/O Configuration** | System Configuration

WebAccess Log Data

Channel Fields

Channel	Log Enabled <input type="checkbox"/>	Access Enabled <input type="checkbox"/>
0	<input checked="" type="checkbox"/>	<input checked="" type="checkbox"/>
1	<input checked="" type="checkbox"/>	<input checked="" type="checkbox"/>
2	<input type="checkbox"/>	<input type="checkbox"/>
3	<input type="checkbox"/>	<input type="checkbox"/>

We can also choose DO and AI channels.

Data Logger

Data Configuration | **Logger Configuration** | Local Data Query

I/O Configuration | **WebAccess I/O Configuration** | System Configuration

WebAccess Log Data

Channel Fields

Channel	Log Enabled <input type="checkbox"/>	Access Enabled <input type="checkbox"/>
0	<input checked="" type="checkbox"/>	<input checked="" type="checkbox"/>
1	<input checked="" type="checkbox"/>	<input checked="" type="checkbox"/>

Data Logger

Data Configuration | **Logger Configuration** | Local Data Query

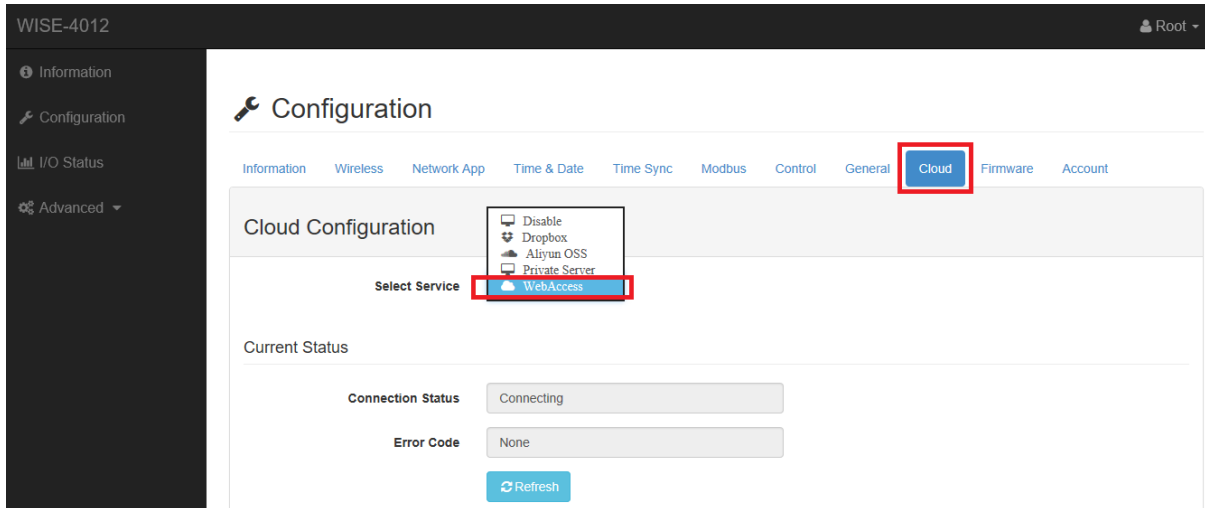
I/O Configuration | **WebAccess I/O Configuration** | System Configuration

WebAccess Log Data

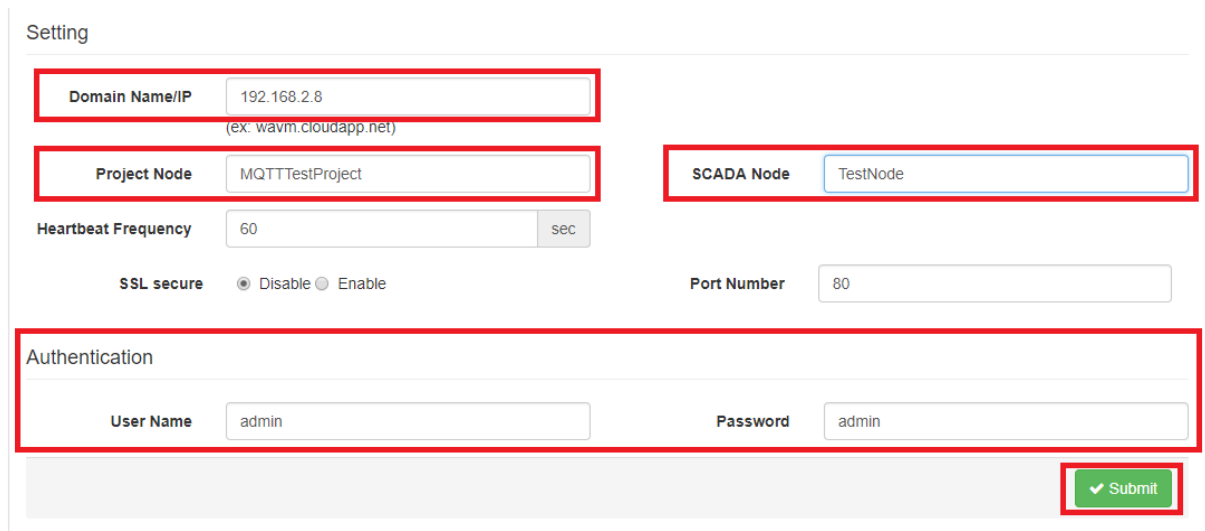
Channel Fields

Channel	Log Enabled <input type="checkbox"/>	Access Enabled <input type="checkbox"/>	AI Deviation Rate (1~99%, full scale range)
0	<input type="checkbox"/>	<input type="checkbox"/>	1
1	<input type="checkbox"/>	<input type="checkbox"/>	1
2	<input checked="" type="checkbox"/>	<input checked="" type="checkbox"/>	1
3	<input checked="" type="checkbox"/>	<input checked="" type="checkbox"/>	1

8. Select “Cloud” and choose “WebAccess” as Select Service.



9. Enter the IP address, project node name and SCADA node name. You should also type the user name and password of your WebAccess/SCADA MQTT broker, the default value is admin/admin



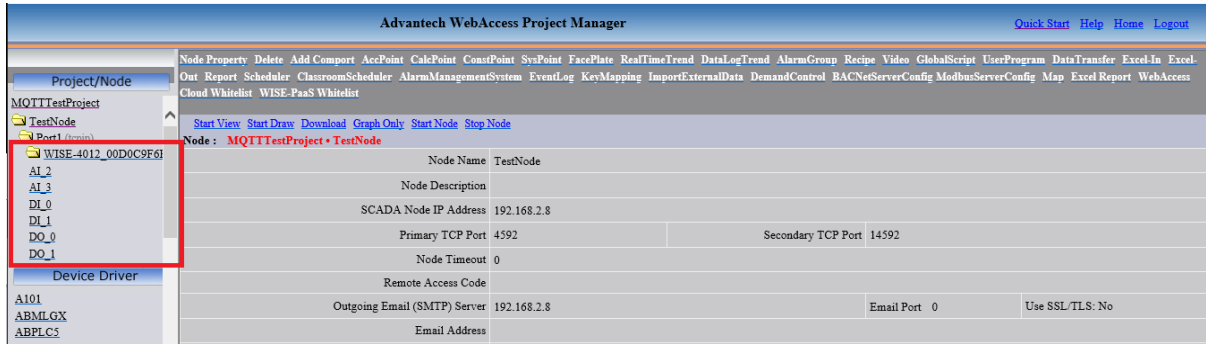
10. Go back to WebAccess Project Home. We can verify the new project “MQTTTestProject” was generated automatically.

Advantech WebAccess Project Manager									
Current Project(s)									
Project Name	Project	Dashboard	Description	IP	HTTP Port	TCP Port	Timeout	Update	Delete
ClassProject	Configure	Edit	Project Description	127.0.0.1	0	4592	0	Update	Delete
MQTTTestProject	Configure	Edit	Test	192.168.2.8	0	4592	0	Update	Delete
Review	Configure	Edit	Project Description	NB070419	0	4592	0	Update	Delete
TestProject	Configure	Edit	Project Description	192.168.2.8	0	4592	0	Update	Delete
WASCADA	Configure	Edit	Project Description	172.16.13.253	0	4592	0	Update	Delete

Please select one of above available Projects to start!!

[Integrity Checking](#)
[Backup](#)
[Restore](#)
[Admin/Project User](#)
[ODBC Log Data Source](#)
[WebAccess Express](#)
[Dashboard Settings](#)
[Setup HTTPS Service](#)
[MQTT Broker](#)
[System Log](#)
[Action Log](#)
[Alarm Log](#)
[Analog Tag Log](#)
[Analog Change Log](#)
[Discrete Tag Log](#)
[Text Tag Log](#)
[Event Log](#)
[LogData Maintenance](#)

When Select “Configure”, we can also verify the device node of WISE-4012 is generated; the tags of WISE-4012 I/O channels we chose in previous section are generated as well.



11. Check the connection status from WISE-4012 web configuration page, it will show “Connected”.

