

Advantech AE Technical Share Document

Date	2020/12/18	SR#	1-4410544731
Category	<input checked="" type="checkbox"/> FAQ <input type="checkbox"/> SOP	Related OS	N/A
Abstract	How to send WISE-2410/4610 data to Azure IoT Hub through WISE-6610?		
Keyword	WISE, LoRaWAN, vibration, build-in sensor, Modbus data, Azure IoT Hub		
Related Product	WISE-2410 series, WISE-4610 series, WISE-PaaS/EdgeLink		

■ **Problem Description:**

This document shows how to send WISE-2410/4610 data to Azure IoT Hub through WISE-6610. A user have to purchase the license of WISE-PaaS/EdgeLink to make it happened.

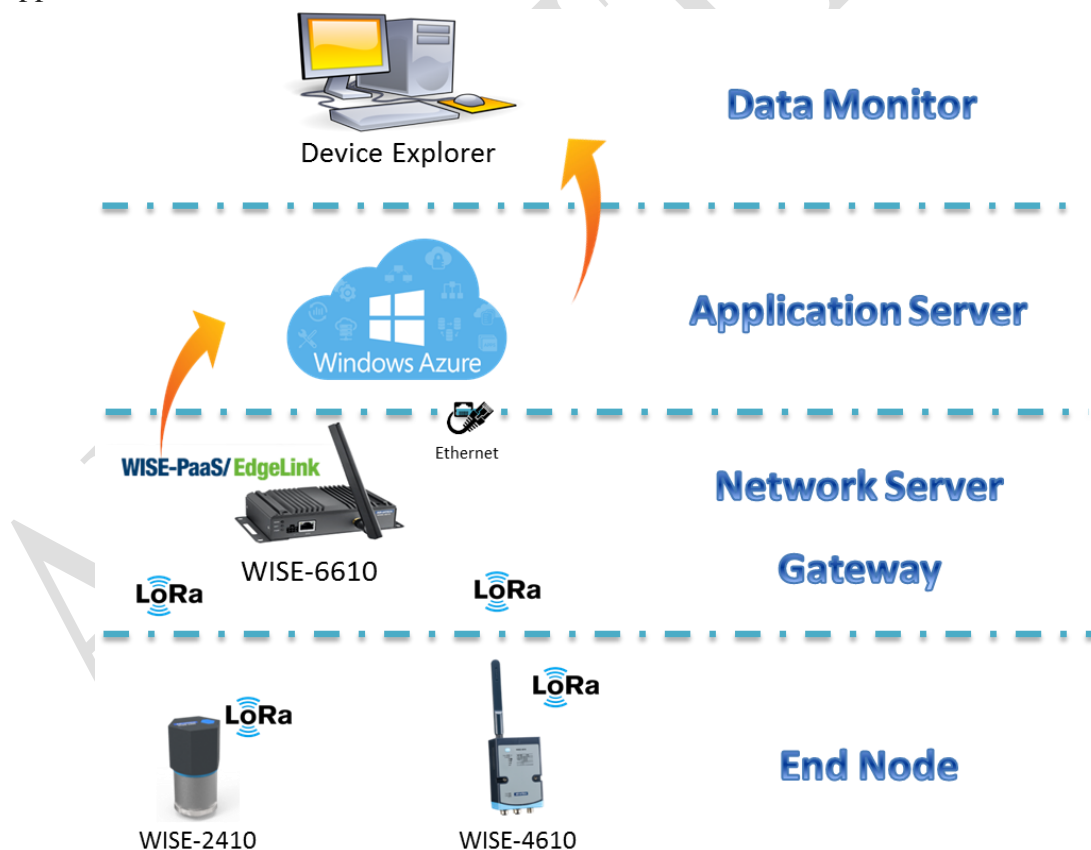


Figure 1. Topology of this scenario.

Limitation! This EdgeLink firmware is unable to achieve resuming data after Network is broken.

■ **Brief Solution - Step by Step:**

Step 1. Follow the FAQ below to setup the connection between WISE-2410/4610. But does not require the Node-Red dashboard steps in the FAQ document.

FAQ: How to connect WISE-2410 with WISE-6610?

<http://forum.adamcommunity.com/viewthread.php?tid=96618&extra=page%3D1>

Step 2. Follow the FAQ below to setup the Modbus server in WISE-6610.

FAQ: How to troubleshooting for Modbus retrieving data?

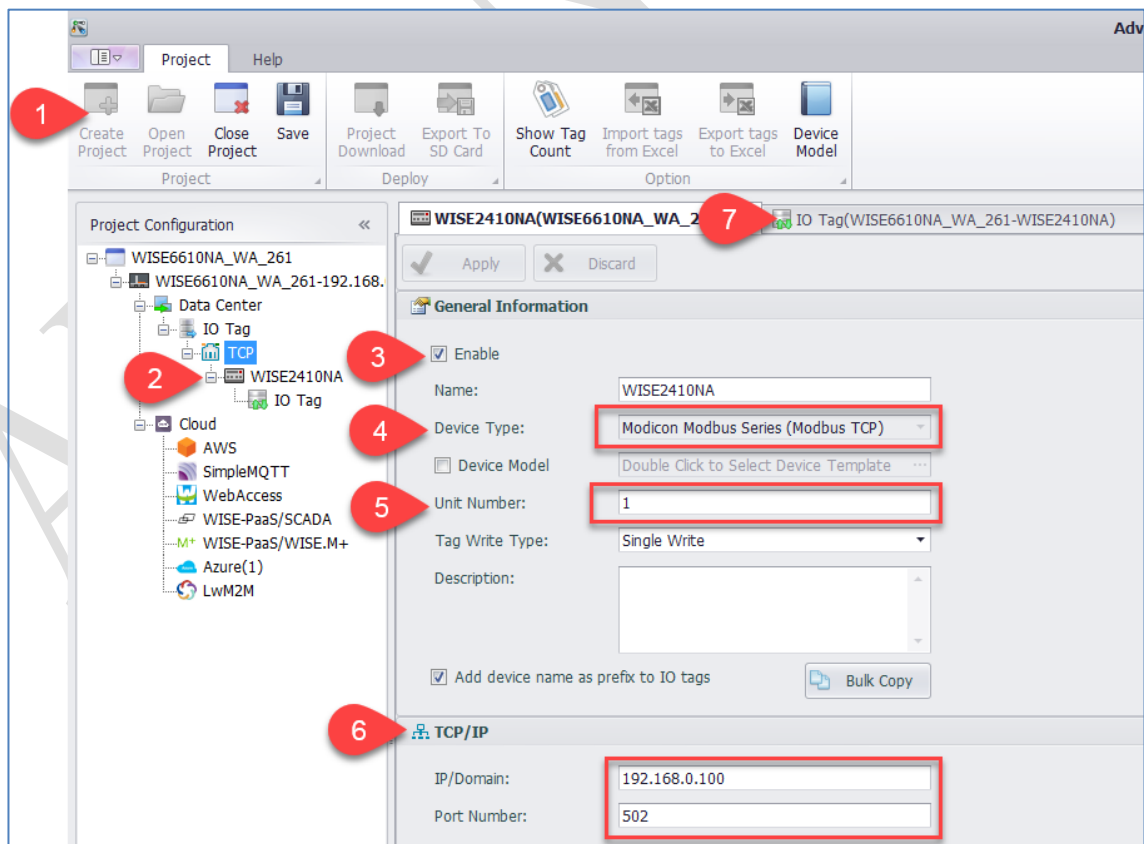
<http://forum.adamcommunity.com/viewthread.php?tid=96702&extra=page%3D1>

Step 3. Upload the WISE-PaaS/EdgeLink image for WISE-6610 received from Advantech according to the following FAQ (start from step 4, uploading). If you do not have this file, please contact Advantech sales for license.

FAQ: How to upgrade WISE-6610 user module

<https://www.advantech.com/support/details/faq?id=1-1ZKYU1L>

Step 4. Create a project and select the model name as “WISE-6610”. Then create a device under TCP port. Setup the connecting IP, port and unit number.



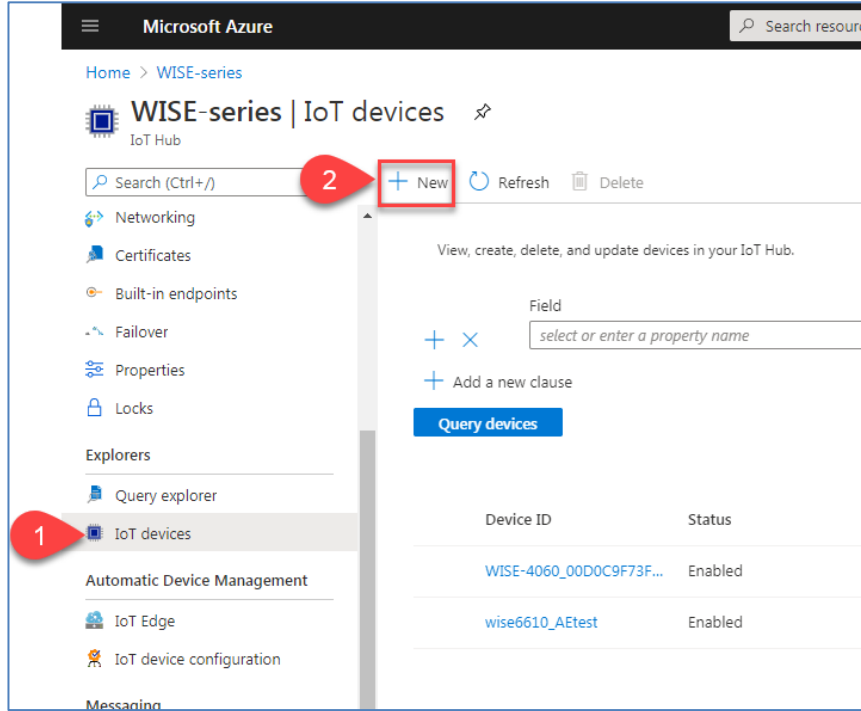
Step 5. Follow the FAQ below to setup the Modbus

FAQ: What is the Modbus Address definition of WISE-4610 on WISE-6610.

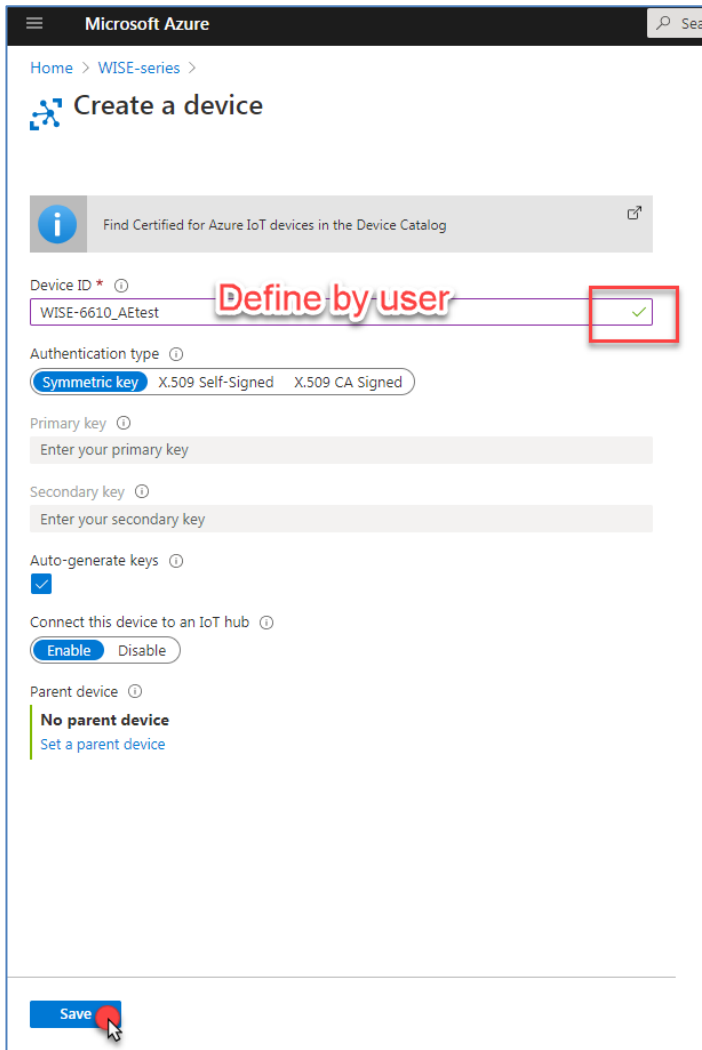
<http://forum.adamcommunity.com/viewthread.php?tid=96707&extra=page%3D1>

Step 6. Log-in Azure account and create a IoT Hub.

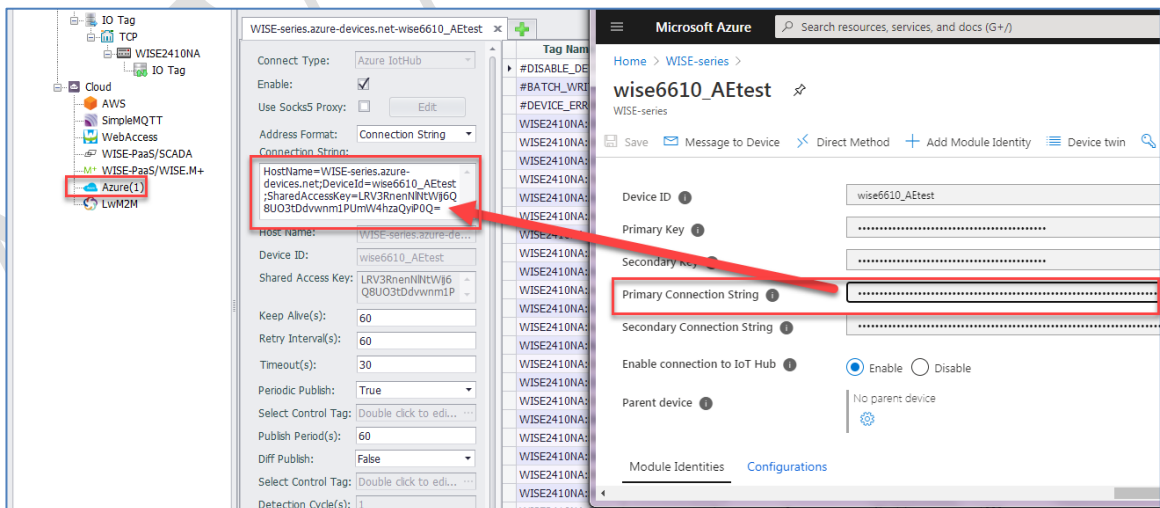
Step 7. Create a device in “IoT devices”.



Step 8. Type-in a device name. If the name is valid, there will be a green mark.

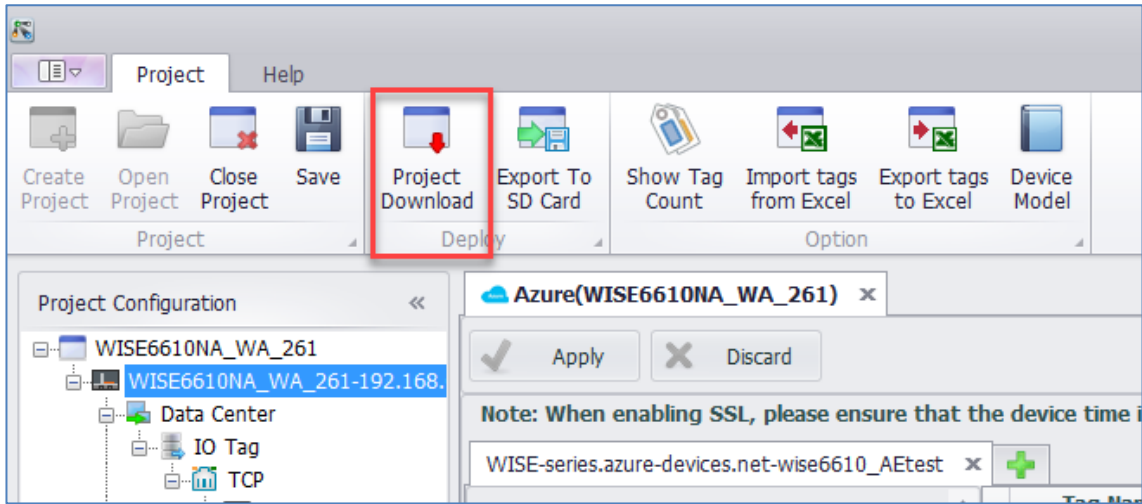


Step 9. After create a device, click on the device name that created. Copy-paste the “primary connection string” to the EdgLink “Azure” tab.

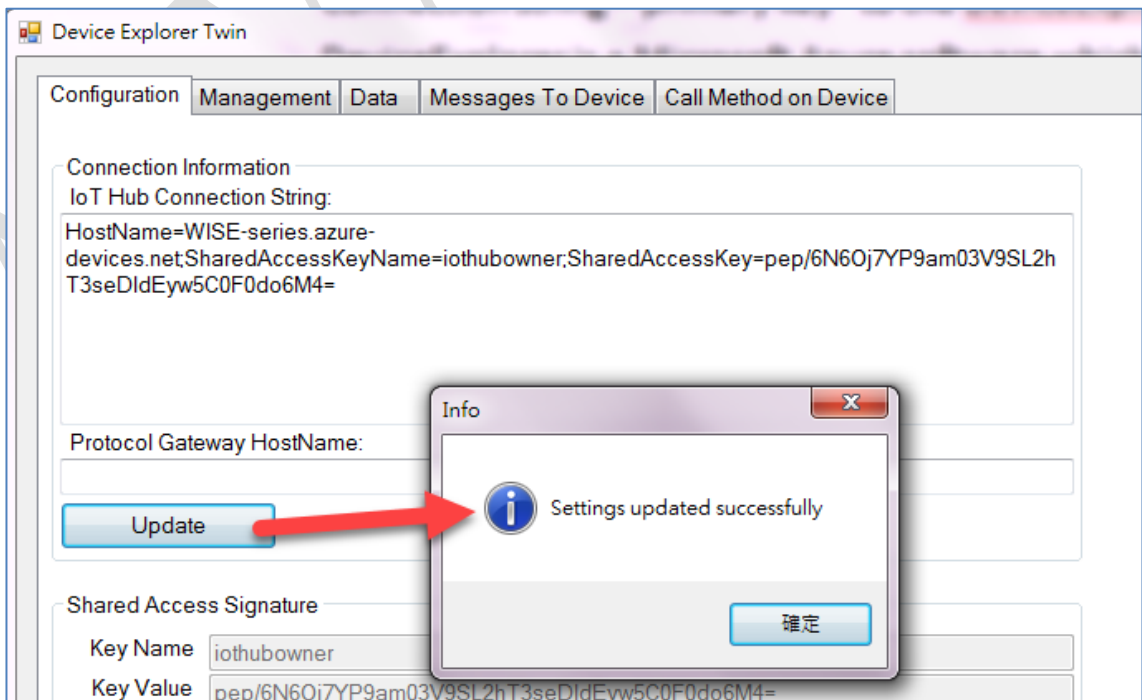
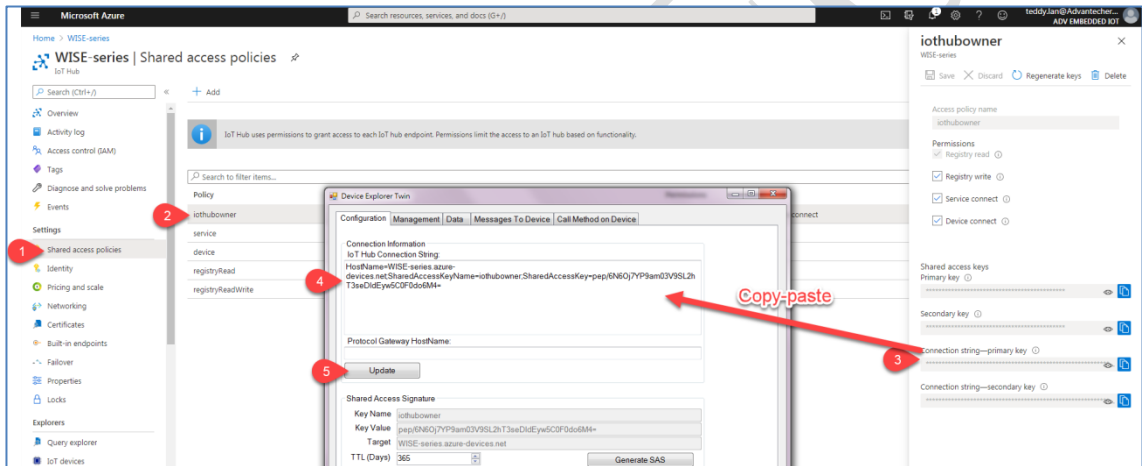


Step 10. Select the tag that created in data center in previous step.

Step 11. Download the project to the WISE-6610.



Step 12. Copy-paste the connection string from “shared access policies/ iothubowner/ Connection string—primary key” to the DeviceExplorer. And click on “update”. DeviceExplorer is a Microsoft Azure software which can be downloaded from GitHub.



Step 13. Go to “data” tab and choose the corresponding “device ID” to “monitor” the results.

