

Advantech AE Technical Sharing Documentation

Date	3/2/2023	SR#	1-3497971401
Category	<input checked="" type="checkbox"/> FAQ <input type="checkbox"/> SOP	Related OS	Windows 10
Abstract	How to set Intel wake on LAN function under Windows 10?		
Keyword	UNO-2271, WOL, wake on LAN, Windows 10, WIN10		
Related Product	UNO, TPC, PPC,		

■ **Problem Description:**

How to set wake on LAN function under Windows 10?

■ **Solution - Step by Step:**

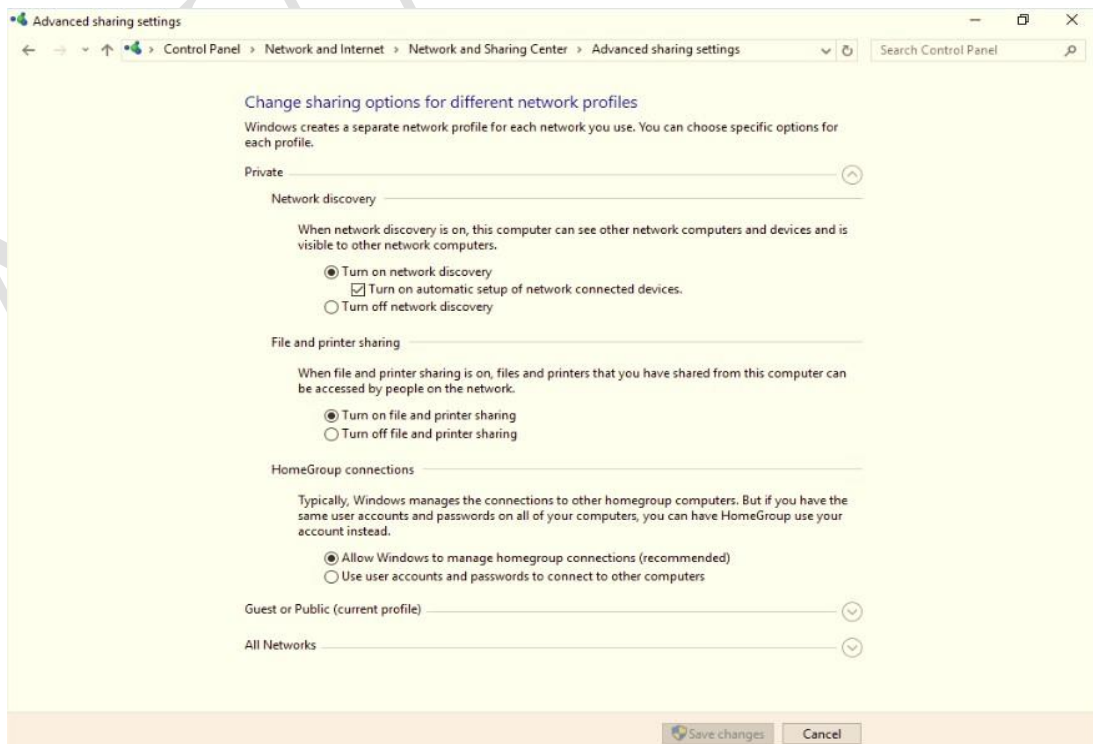
Step1

Enable the Wake On LAN from BIOS. Following is according to UNO-2271 BIOS list.
 When power on press “Delete” into BIOS setting → Advanced → LAN controller → Wake on LAN enable → enable.

→ Save and exit.

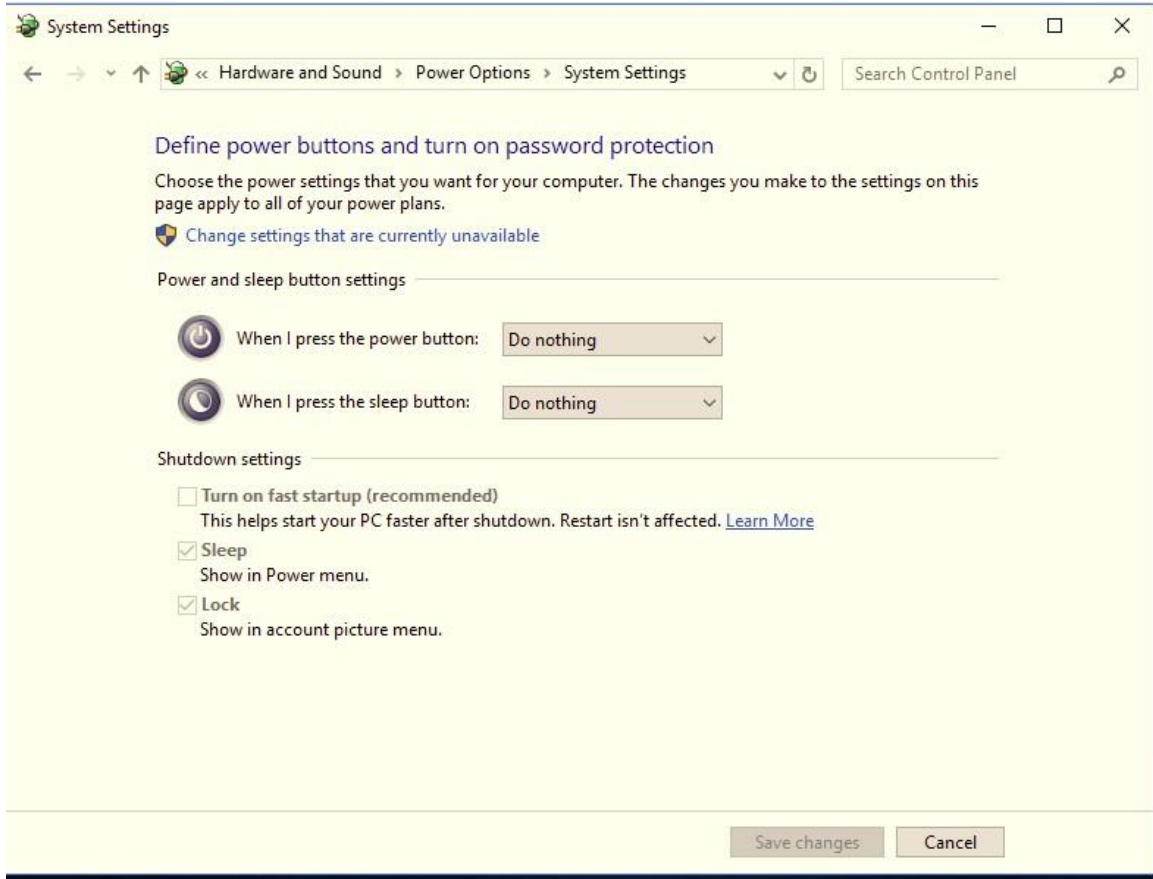
Step2

Control Panel → Network and Internet → Network and sharing Center → Advanced sharing settings → Turn on network discovery → Turn on file and printer sharing → Save and change.



Step3

System Settings→Hardware and sound→Power Options→System Settings→Change settings that are currently unavailable→un-chick Turn on fast startup→save change.

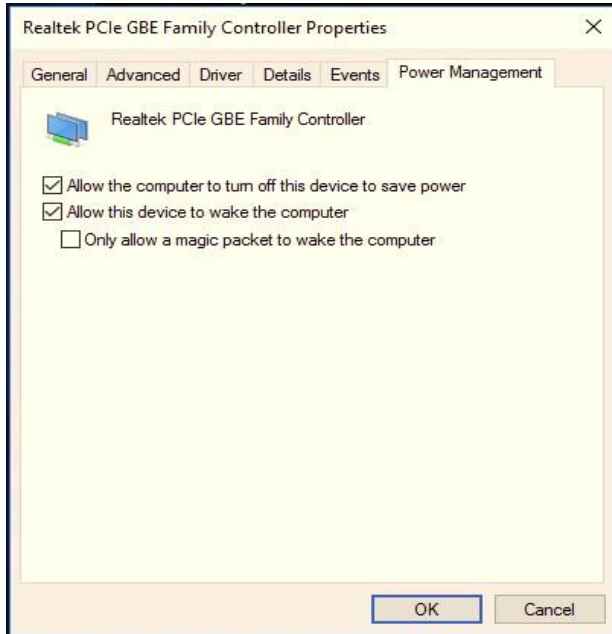


Step4

Device Management → found the LAN card → right click → properties → Power Management → check the box as following → OK.

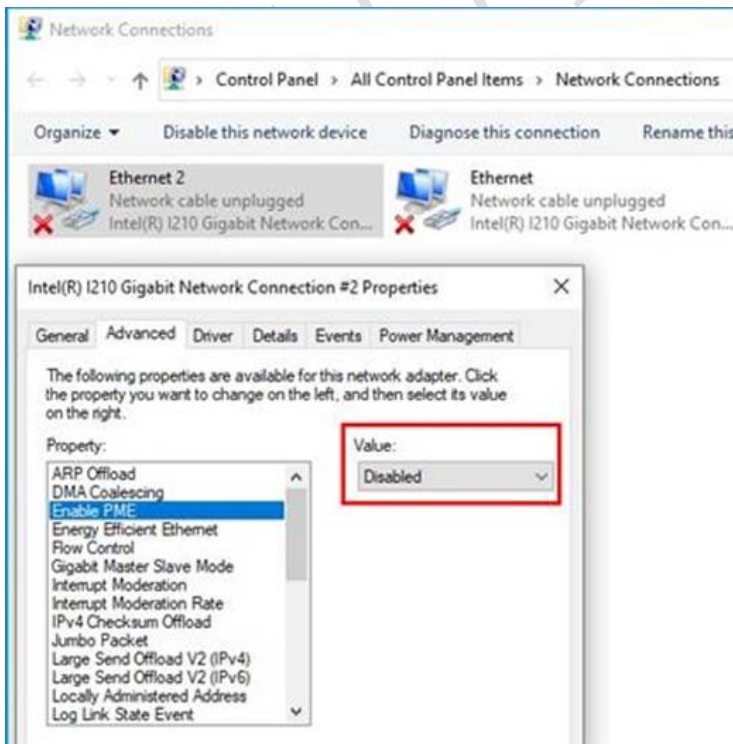
Different Intel LAN driver versions may have different descriptions.

Allow this device to wake the computer



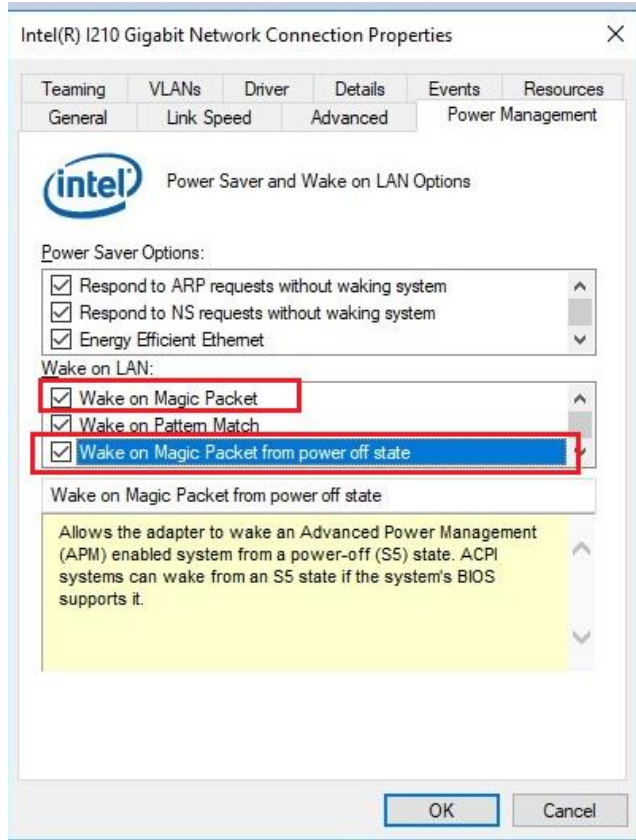
Enable PME

Advanced -> Enable PME -> [Enabled]



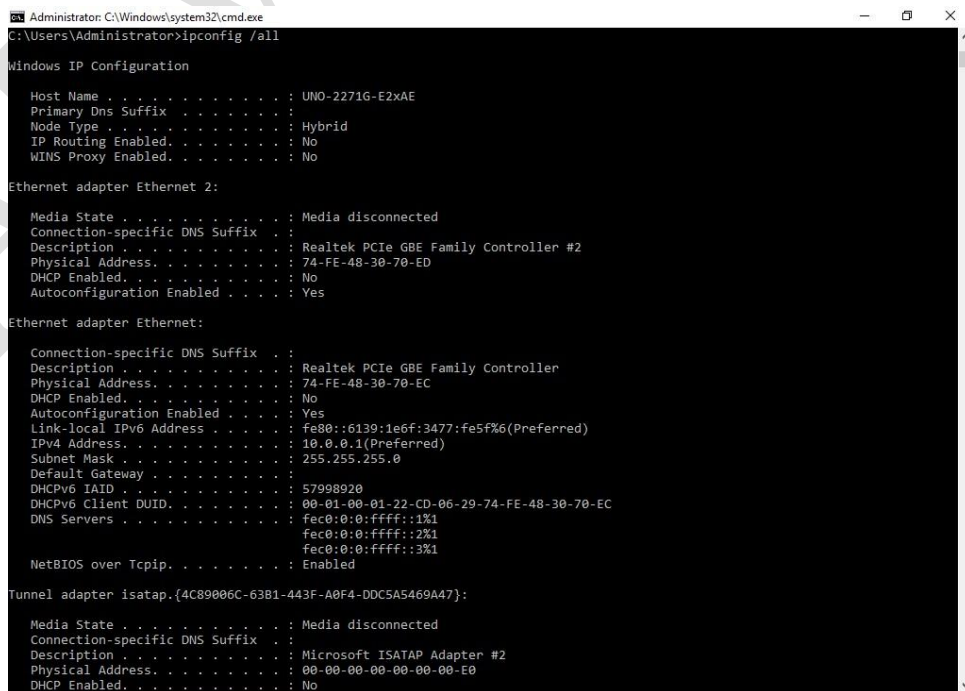
Wake on Magic Packet

Wake on Magic Packet from power off state



Step5

Open the CMD, type “ipconfig /all” to make sure your mac address and IP address. You will use the information when you WOL from other computer.



Step6

Connect the RJ-45 cables and ping each other to ensure the connection is successful.

```

Administrator: Command Prompt

Microsoft Windows [Version 10.0.14393]
(c) 2016 Microsoft Corporation. All rights reserved.

C:\Users\Administrator>ping 10.0.0.2

Pinging 10.0.0.2 with 32 bytes of data:
Reply from 10.0.0.2: bytes=32 time<1ms TTL=128
Reply from 10.0.0.2: bytes=32 time<1ms TTL=128
Reply from 10.0.0.2: bytes=32 time<1ms TTL=128
Reply from 10.0.0.2: bytes=32 time<1ms TTL=128

Ping statistics for 10.0.0.2:
    Packets: Sent = 4, Received = 4, Lost = 0 (0% loss),
    Approximate round trip times in milli-seconds:
        Minimum = 0ms, Maximum = 0ms, Average = 0ms

C:\Users\Administrator>
    
```

Step7

You can wake On LAN by WakeMeOnLan Utility.

Make sure the every content is correct, and turn the target PC off to test the WOL function as following.

IP Address	Computer Name	MAC Address	Network Adapter Company	User Text	Status	Workgroup	Broadcast Addr...	Port Number	Multiple Pack...	Index
10.0.0.3	UNO-2271G-E2xAE	74-FE-48-30-70-ED	ADVANTECH CO., LTD.		Off					2
10.0.0.1	UNO-2271G-E2xAE	74-FE-48-30-70-EC	ADVANTECH CO., LTD.		On					3