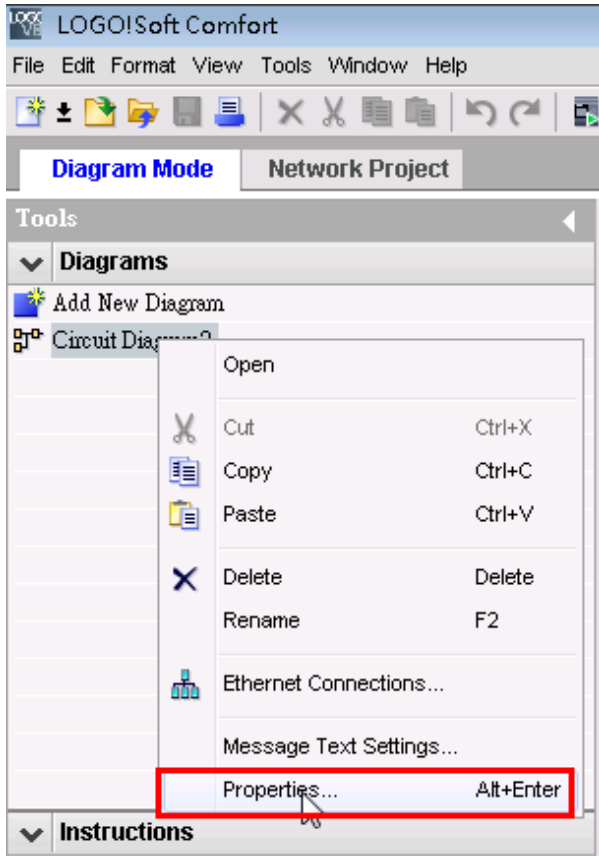


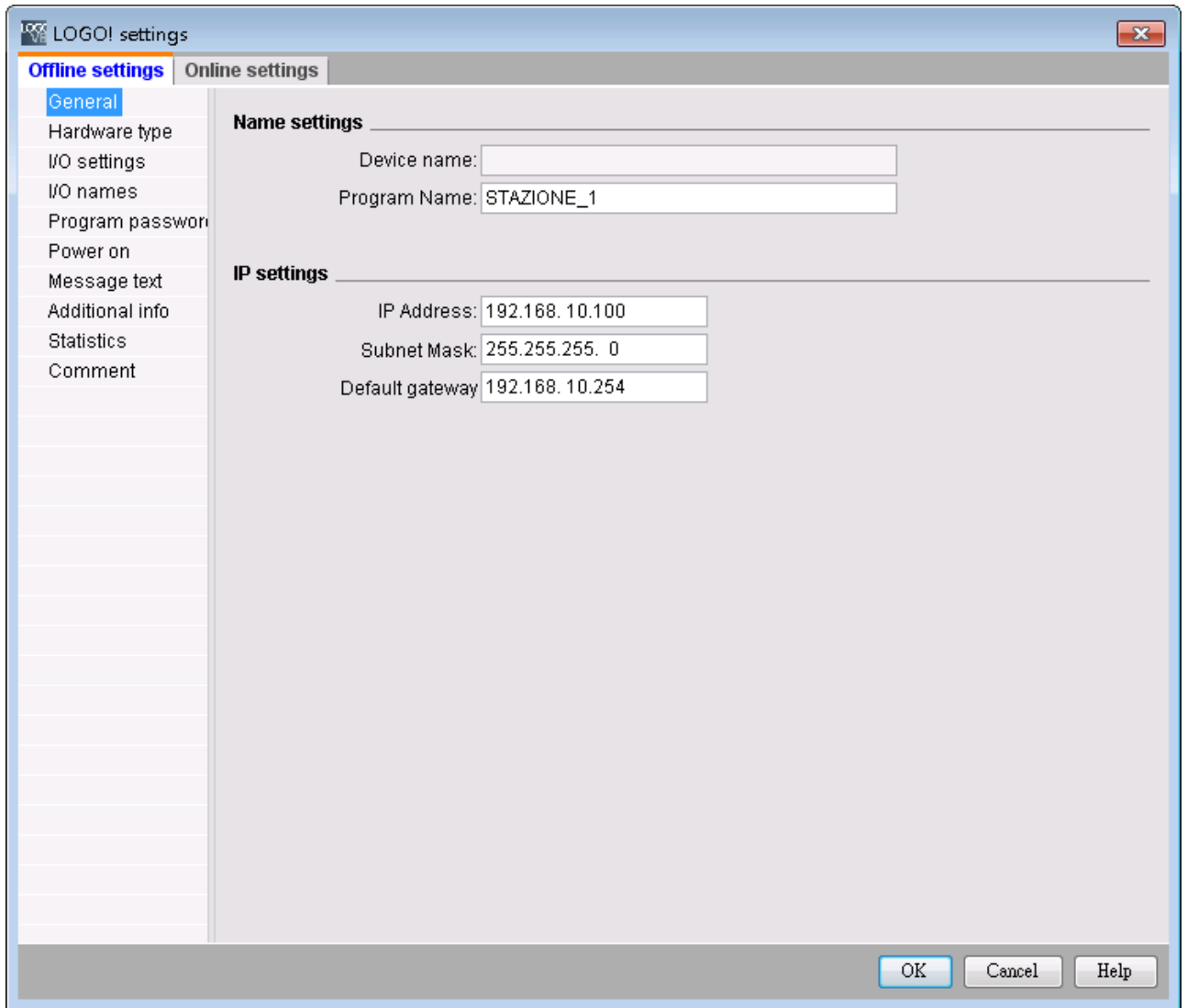
Siemens LOGO Driver Guide

Siemens LOGO	1-1
設備驅動指南	錯誤! 尚未定義書籤。
1. Setting up the Siemens LOGO! PLC	3
2. WebAccess Setting - Configure Siemens Logo device	7

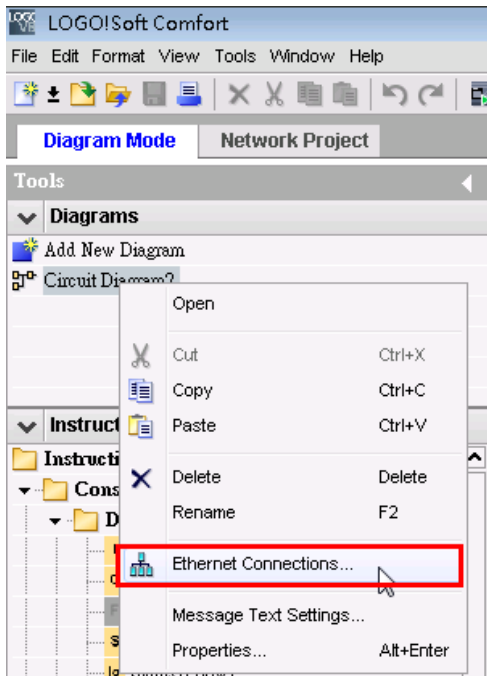
1. Setting up the Siemens LOGO! PLC

1. Start **Siemens LOGO!Soft Comfort**
2. Right click on the **Diagram** you want to configure and select **Properties...**

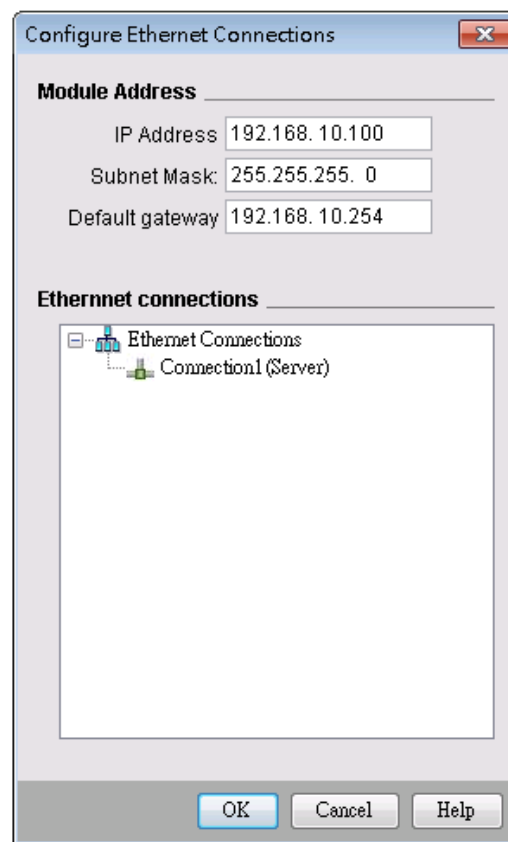
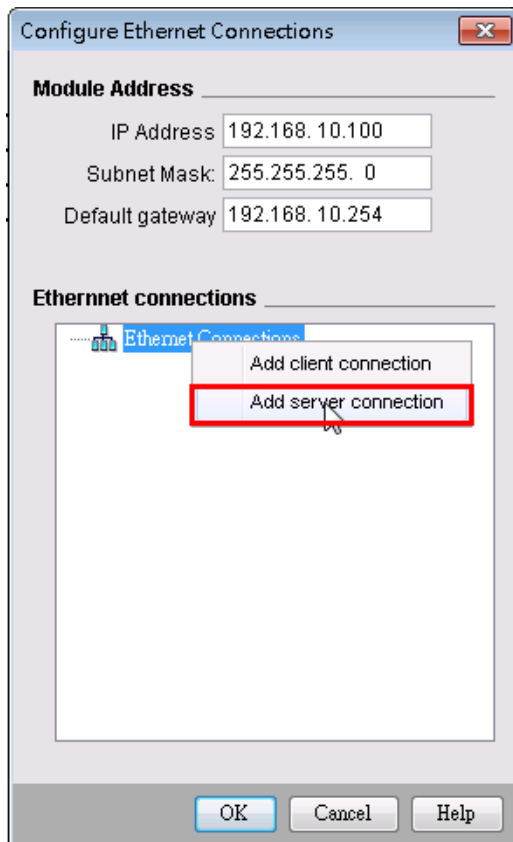




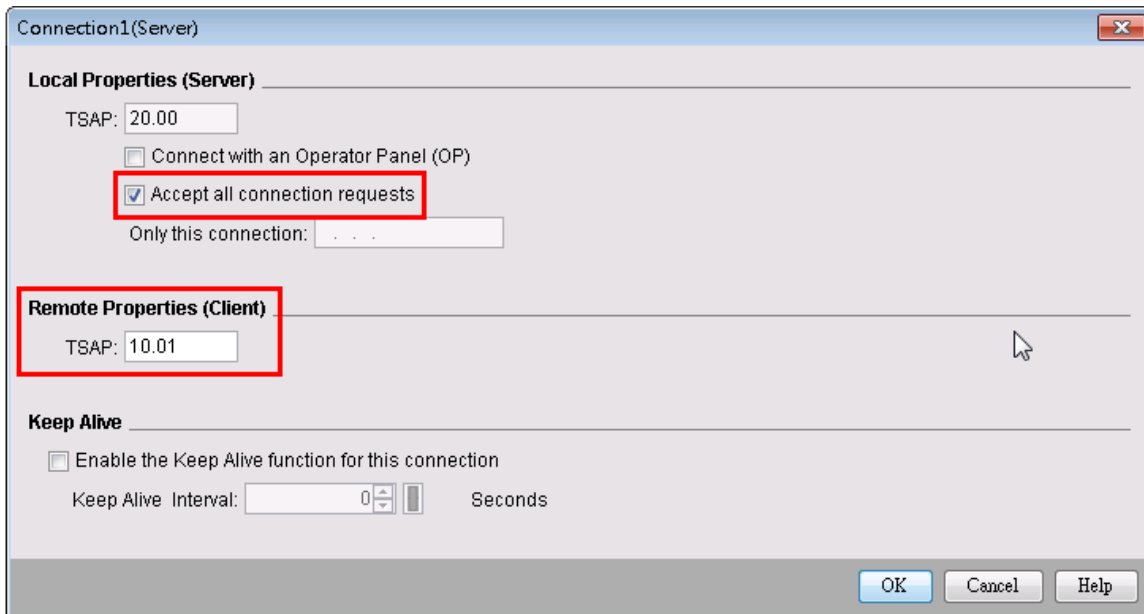
3. Enter **IP Address** and **Subnet Mask** and **Default gateway**. Click **OK** to close the dialog.
4. Right click on the **Diagram** again and select **Ethernet Connections...**



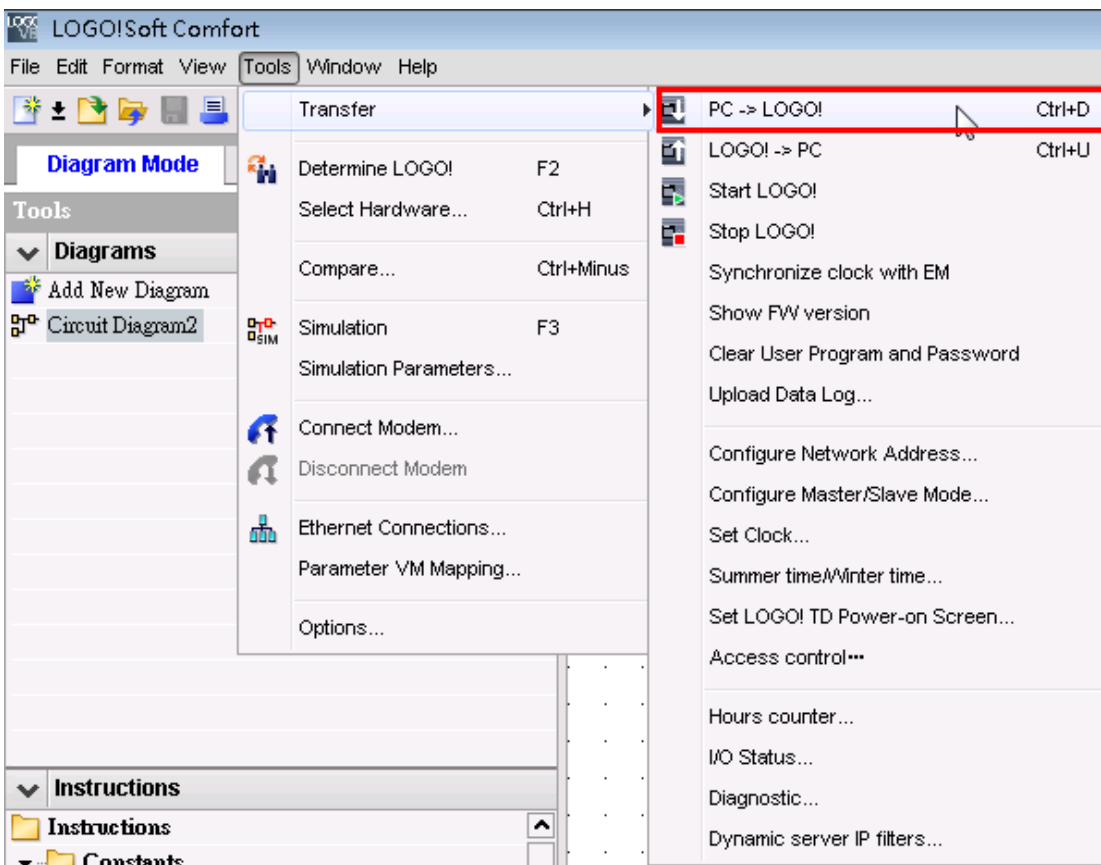
5. Right click on **Ethernet Connections**, and select **Add server connection**.



6. Double click on the new connection(**Connection1(Server)**). The **Connection** dialog will open. Click Accept all connection requests and set the remote TSAP (Ex "10.01")



7. Download configure settings to Siemens LOGO.



2. WebAccess Setting - Configure Siemens Logo device

1. Add Tcp/Ip

Create New Comport		[Cancel]	Submit
Interface Name	TCPIP		
Comport Number	2		
Description	Description		
Scan Time	1 <input type="radio"/> MilliSecond <input checked="" type="radio"/> Second <input type="radio"/> Minute <input type="radio"/> Hour		
Timeout	1000 MilliSecond		
Retry Count	3		
Auto Recover Time	60 Second		
Backup Port Number	0		
Scan Devices in Parallel	<input type="radio"/> Yes <input checked="" type="radio"/> No		
		[Cancel]	Submit

2. Add Device

Create New Device		[Cancel]	Submit
Device Name	Logo		
Description			
Unit Number	0		
Device Type	SiemLogo		
Primary	IP Address	192.168.10.100	
	Port Number	102	
	Device Address	if other than Unit Number	
Secondary	IP Address		
	Port Number		
	Device Address		
Remote TSAP in Hex(ex 10.01)	10.01		

Device Type : Select **SiemLogo**

IP Address : IP Address of The LOGO PLC (Ref 1.2) °

Port Number : **102**

Remote TSAP : **10.01** (Ref 1.6)