

Advantech AE Technical Share Document

Date	2022 / 05 / 31	Release Note	<input type="checkbox"/> Internal <input checked="" type="checkbox"/> External
Category	<input checked="" type="checkbox"/> FAQ <input type="checkbox"/> SOP	Related OS	Windows 10 LTSC
Abstract	How to install IGCC on Windows 10 LTSC		
Keyword	IGCC, Win10 LTSC		
Related Product	ASG Products		

■ Problem Description:

Why was the Intel® Graphics Command Center removed from the graphics driver installer package?

To compliance with Microsoft® new Universal Windows Platform (UWP), Intel has stopped bundling the Intel® Graphics Command Center and the Intel® Graphics Control Panel with DCH Graphics Drivers. UWP requires that all driver-dependent applications be made available only through the Microsoft Store.

In other words, IGCC can only download and install from Microsoft Store. But, on Windows 10 LTSC, the policy is not built-in Microsoft Store and there is also not an official release version.

In order to leverage IGCC some useful features, e.g. Scale.

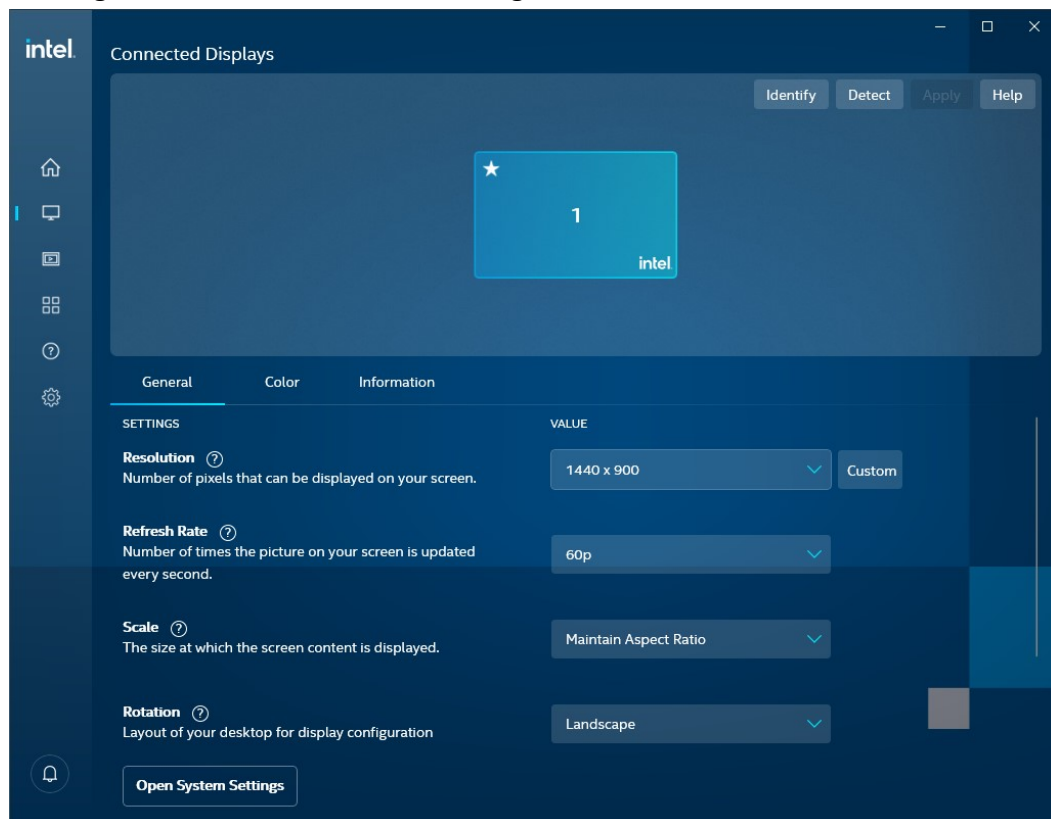


Figure 1: IGCC features

The workaround is, to install Microsoft Store simply and quickly way from unofficial methods.

■ **Brief Solution - Step by Step:**

1. Download and decompress to C:\ from below link:
<https://github.com/kkkgo/LTSC-Add-MicrosoftStore>
2. After installed, reboot the system.
3. Turn on Windows Update service.

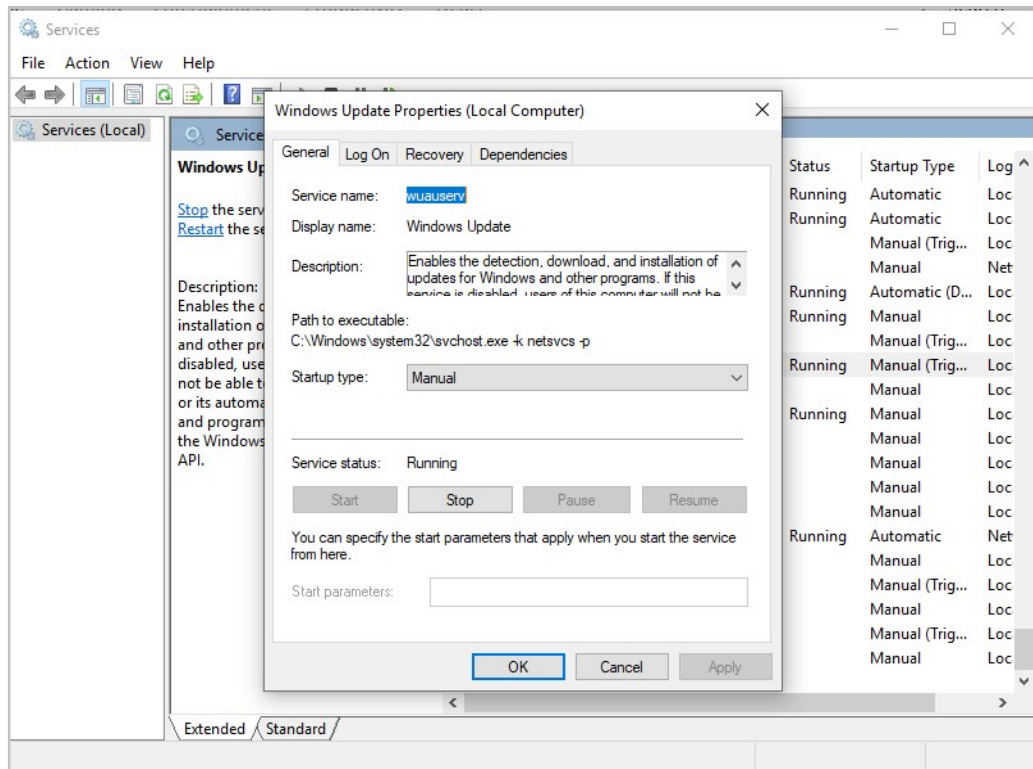


Figure 2: Windows Update service

4. Search “Intel Graphic Command Center” in Microsoft Store.
5. Install and launch IGCC.

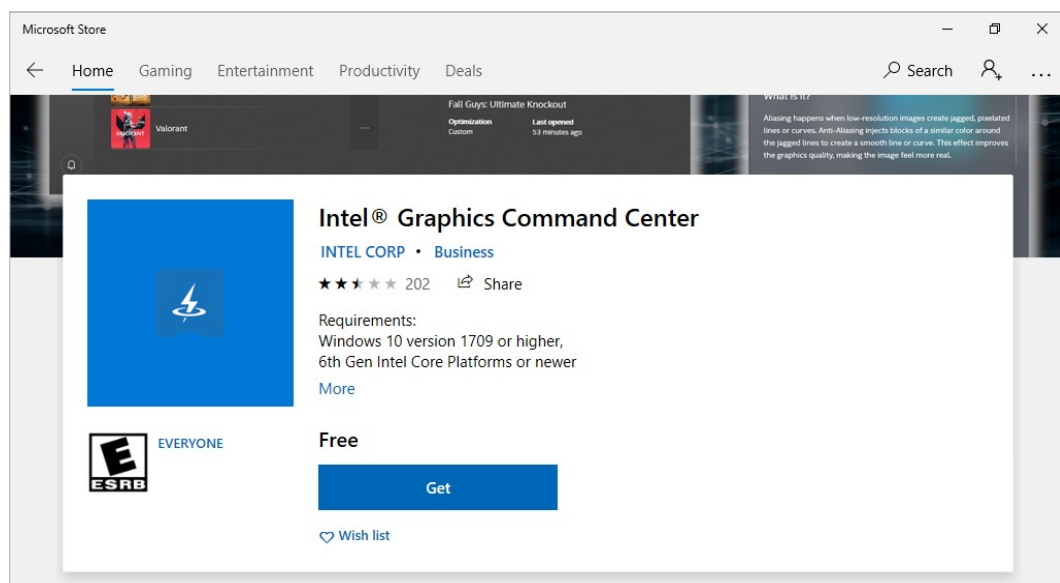


Figure 3: IGCC in Microsoft Store

6. After installation, turn off Microsoft Update (As required)

NOTE:

If the Microsoft Store cannot be launched after installation, please open the Command Prompt Window with administrator permission and run the following commands:

```
PowerShell -ExecutionPolicy Unrestricted -Command "& {$manifest = (Get-AppxPackage  
Microsoft.WindowsStore).InstallLocation + '\AppxManifest.xml' ; Add-AppxPackage -DisableDevelopmentMode -Register  
$manifest}"
```

■ Reference:

1. How to Install the Intel® Graphics Command Center?
<https://www.intel.com/content/www/us/en/support/articles/000055840/graphics.html>
2. IGCC on Microsoft Store:
<https://www.microsoft.com/en-us/p/intel-graphics-command-center/9plfnInt3g5g?activetab=pivot:overviewtab>
3. Installing Intel® Graphics Command Center and Intel® Graphics Control Panel on Windows® 10 Long-Term Servicing Channel (LTSC)
<https://www.intel.com/content/www/us/en/support/articles/000055210/graphics.html>
4. Add Store to Windows 10 Enterprise LTSC
<https://github.com/kkkgo/LTSC-Add-MicrosoftStore>