

Advantech AE Technical Share Document

Date	2023 / 01 / 04	Release Note	<input type="checkbox"/> Internal <input checked="" type="checkbox"/> External
Category	<input checked="" type="checkbox"/> FAQ <input type="checkbox"/> SOP	Related OS	NA
Abstract	What is the important information have to know before ordering PCM-23C1CF-CE module?		
Keyword	Datasheet, Cfast, Power cable, SATA cable		
Related Product	PCM-23C1CF-CE, UNO-1372G-E, TPC-B500/B510, TPC-1x51(B)		

■ Problem Description:

This guide is only for the PCM-23C1CF-**CE** version and **DOES NOT** affect previous versions

Due to Intel Buck Converter EN5311QI is EOL, the BE version will not be able to continue. (Phase out)
However, considering that some customer groups still need to use such extended products. Under the balance of cost and benefit, the CE version will remove the support of EN5311QI, and adopts on specific system models with a customized SATA (plus power) cable to continue supporting.

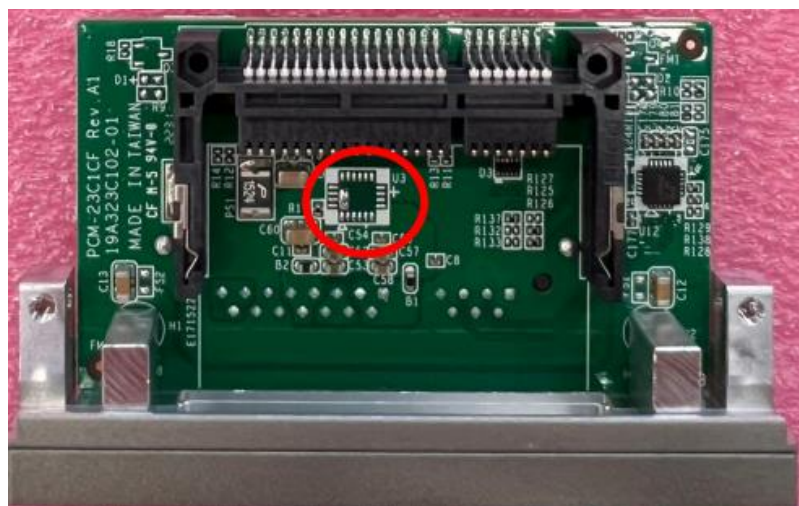


Figure 1. PCM-23C1CF-CE (EN5311QI was removed)

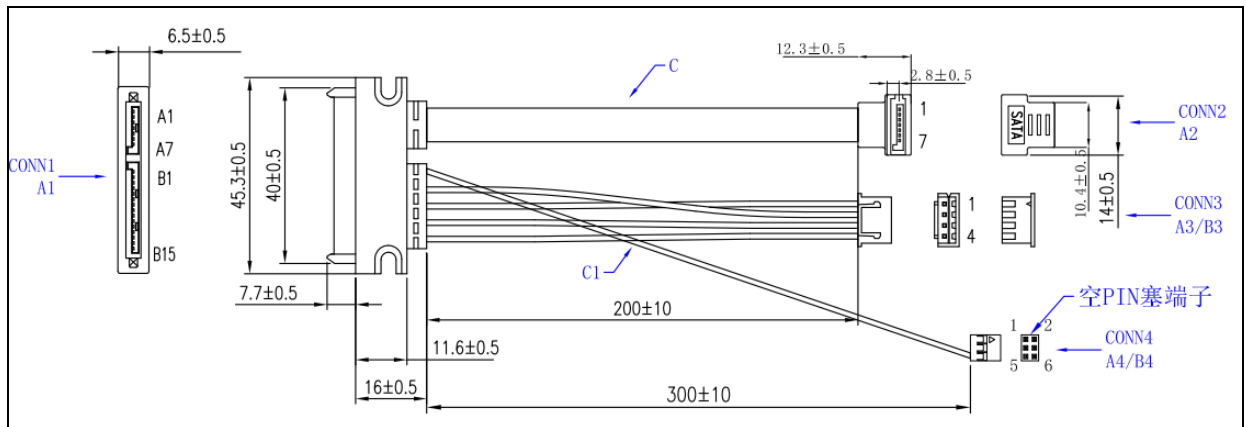
At present, CE version supported system models are follow:

- **UNO-1372G-ExAE / UNO-1372GH-ExAE**
- **TPC-B500 / B510**
- **TPC-1x51 (B):**

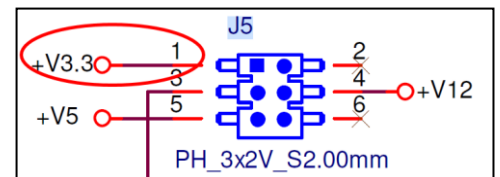
TPC-1251T-E3BE / TPC-1251T-E3BU / TPC-1251T-E3CE / TPC-1251T-E3CU / TPC-125H-E3BE / TPC-1551T-E3BE
TPC-1551T-E3BU / TPC-1551T-E3CE / TPC-1551T-E3CU / TPC-155H-E3BE / TPC-1751T-E3BE / TPC-1751T-E3BU
TPC-1751T-E3CE / TPC-1751T-E3CU / TPC-1851WP-E3BE / TPC-1851WP-E3CE

In addition, the corresponding SATA (plus power) cable is **mandatory**.
Here are the corresponding part numbers:

- **1700033548-01** / The CFast power cable for UNO-1372G/ GH



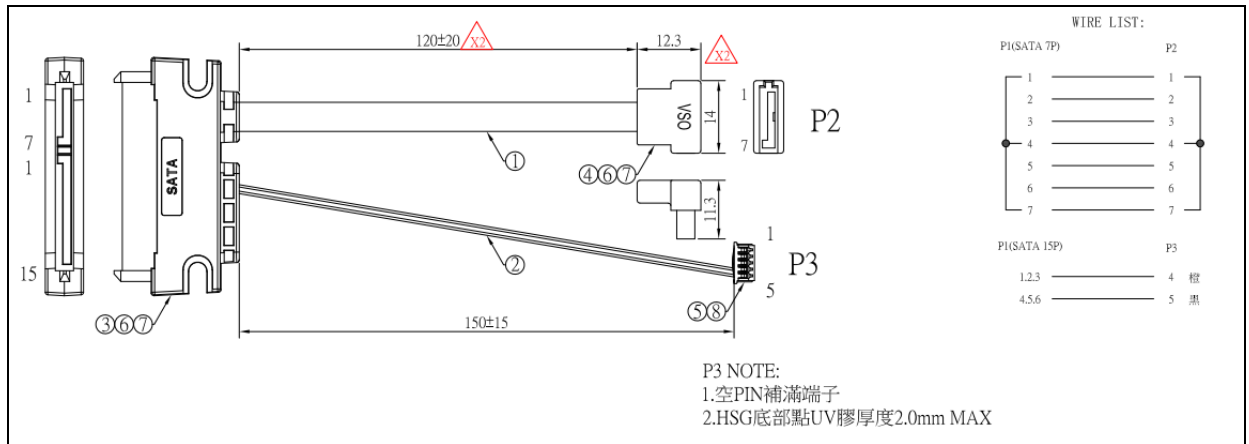
The corresponding connector on UNO-1372G/ GH is **J5**.



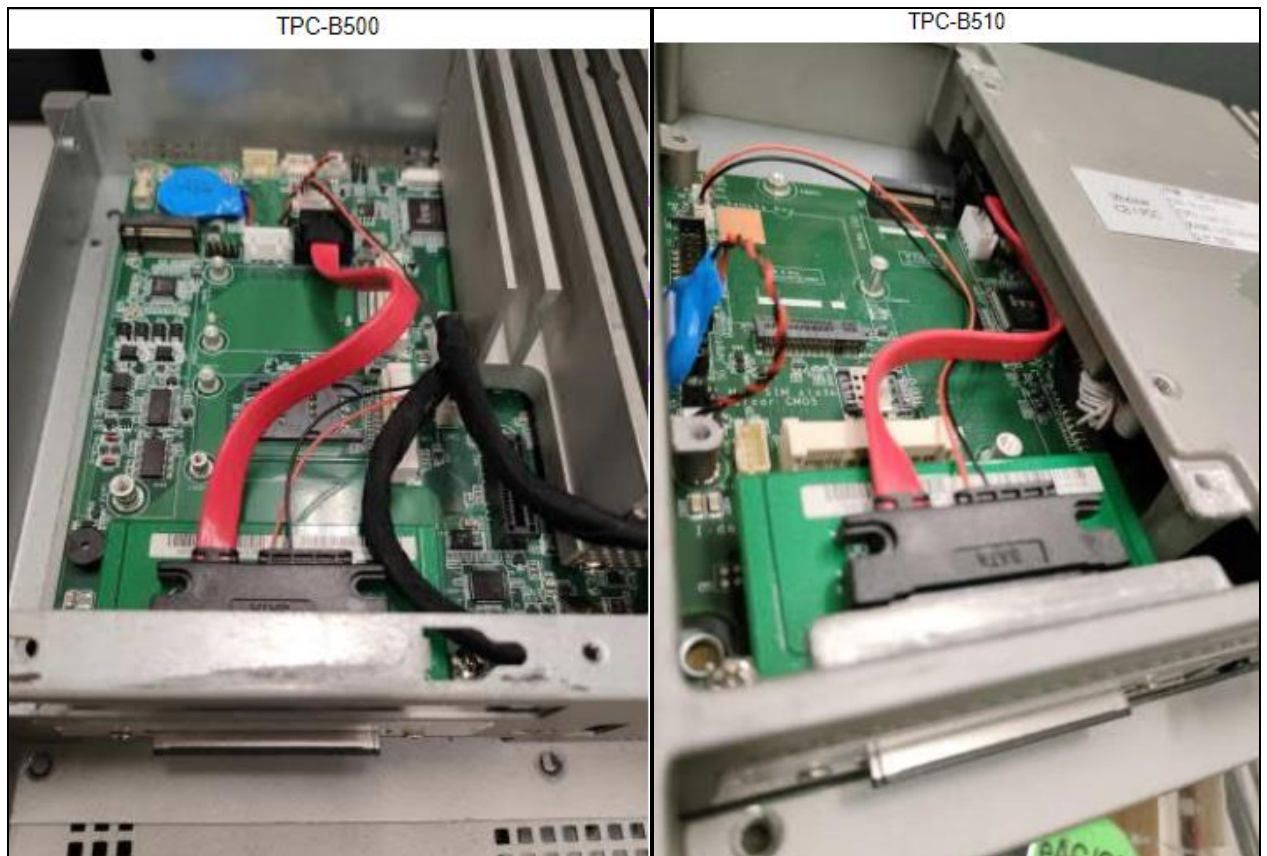
Attention!

If you would like to apply CE version with UNO-1372G series, you have to check one thing before ordering. That is whether if **ECOM-198618** (12/15/2022) had been applied on UNO-1372G or not. It will add a pin header to J5 position in order to support +3.3V. Without this pin header, you CANNOT work with PCM-23C1CF-CE version on UNO-1372G.

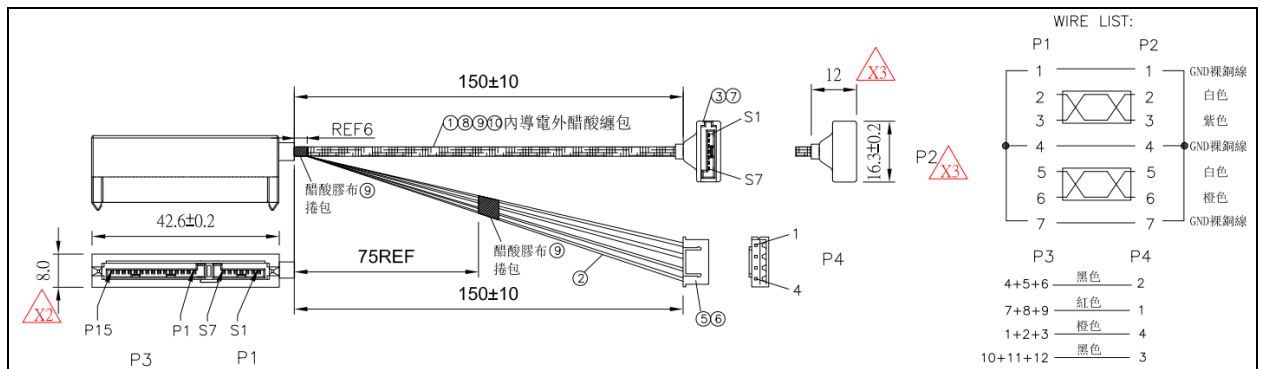
- **1700033614-01** / The CFast power cable for TPC-B500/510



The corresponding connector on TPC-B500 is **CN52** and TPC-B510 is **CN7**.



- **1700033645-01** / The CFast power cable for TPC-1x51(B)



The corresponding connector on TPC-1x51 (B) is **CN8**.



Attention!

If TPC-1x51 (B) system was applied **ECOM-198105** (12/06/2022), you **DO NOT** need to purchase this cable additional. It is set and built-in TPC-1x51 already.