

Advantech AE Technical Share Document

Date	2024 / 02 / 07	Release Note	<input type="checkbox"/> Internal <input checked="" type="checkbox"/> External
Category	<input type="checkbox"/> FAQ <input checked="" type="checkbox"/> SOP	Related OS	N/A
Abstract	How to Use Redfish through Localhost		
Keyword	BMC, Redfish		
Related Product	ASMB-817, ASMB-927, ASMB-977, ASMB-831, ASMB-788, ASMB-787, ASMB-622V3, ASMB-610, ASMB-610V3, IPMI-2000		

This document is for user who would like to use Redfish through localhost.

■ **BIOS Setting:**

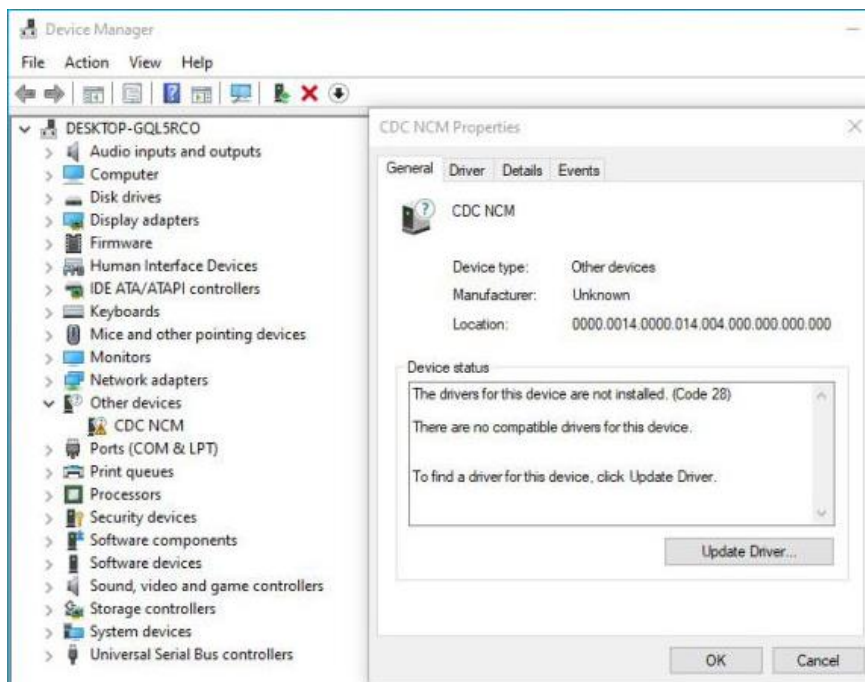
Please set following item to Enabled in order to use Redfish through localhost.

BIOS => Server Mgmt => Disable BMC Virtual USB Device = Enabled

■ **Side Effects:**

- For the OS versions except Windows 11 and Windows Server 2022, there would be a yellow mark showing in the device manager. This is due to Windows driver limitation that there is no UsbNcm driver available in earlier Windows versions.

Communications and CDC Control (02h)	Net {4d36e972-e325-11ce-bfc1-08002be10318}	UsbNcm.sys UsbNcm.inf	Windows 11 Windows Server 2022	Microsoft provides the UsbNcm.sys driver to operate devices that comply with Usb NCM . The source code for this driver is available at NCM-Driver-for-Windows .
	Supports Subclass 0Dh (NCM)			



- Random hang issue during BIOS stage.
Procedures to reproduce the issue:

- 2-1. Boot into EFI shell
- 2-2. Type "exit" and "exit" to enter BIOS setup menu
- 2-3. Choose "Save and Exit", "Yes" for Save configuration and exit.
USB keyboard gets stuck

So far, we haven't got any solution to solve this random hang issue yet. Since this is not a common use case, we recommend customer to power cycle or reset to skip this unexpected issue.

■ **Reference:**

<https://learn.microsoft.com/en-us/windows-hardware/drivers/usbcon/supported-usb-classes>