

Advantech AE Technical Share Document

Date	2015 / 04 / 08	SR#	1-2040446793
Category	<input checked="" type="checkbox"/> FAQ <input type="checkbox"/> SOP	Related OS	ROM-DOS
Abstract	How to change IP address setting of ADAM-5510KWTP series		
Keyword	IP address, ADAM-5510KWTP		
Related Product	ADAM-5510KWTP, ADAM-5510EKWTP		

[Problem]

How to change IP address setting of ADAM-5510KWTP series



[Solution]

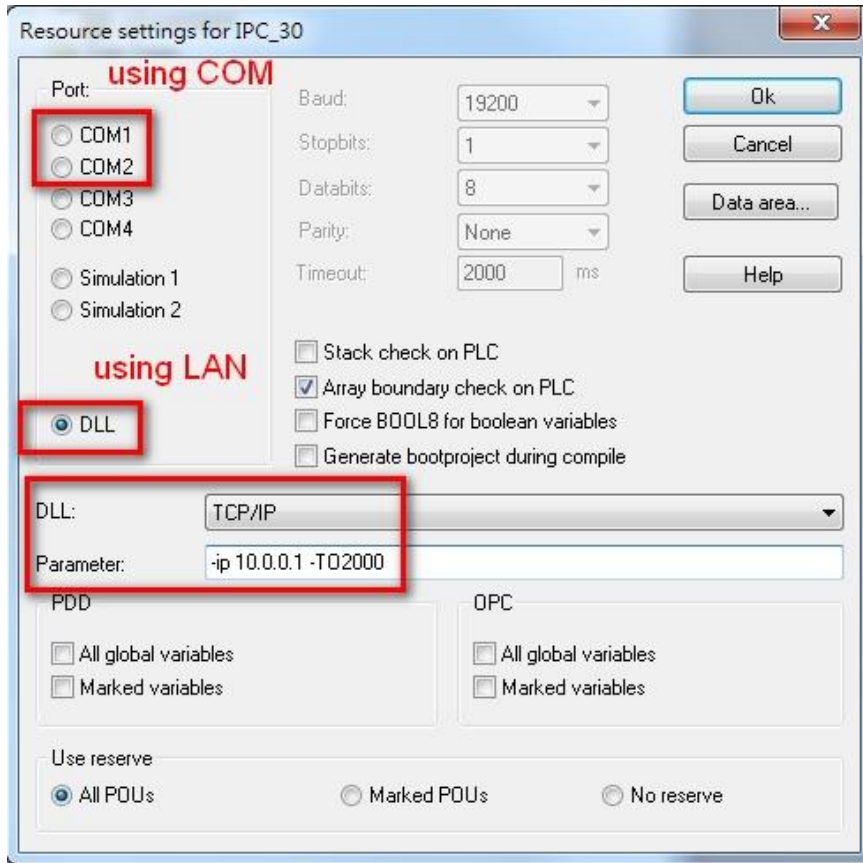
Step 1: Using KW Multiprog to connect ADAM-5510KWTP series by using

- RS-232 (COM1 port)
- RS-485 (COM2 port)
- RJ45 LAN Port

Note: The default IP address of ADAM-5510KWTP is **10.0.0.1**

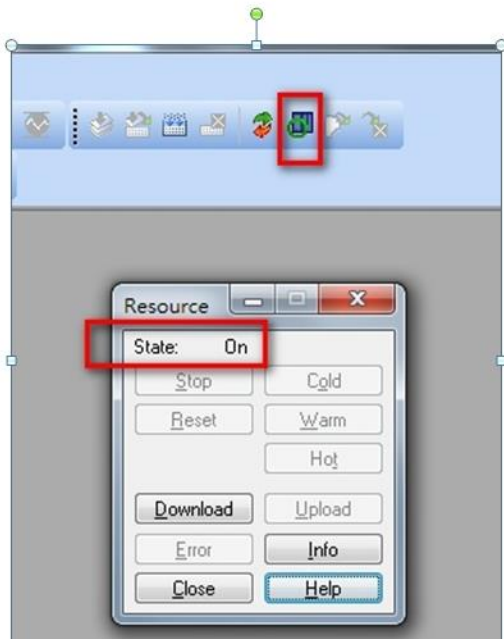


Create a new ADAM-5510KW project and change the resource setting as below

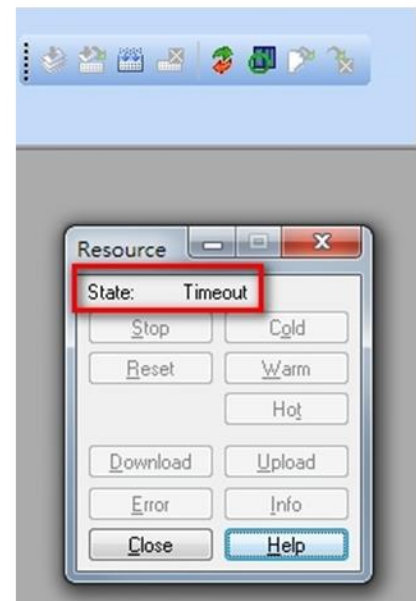


Step 2: Check the connection status by project control dialog

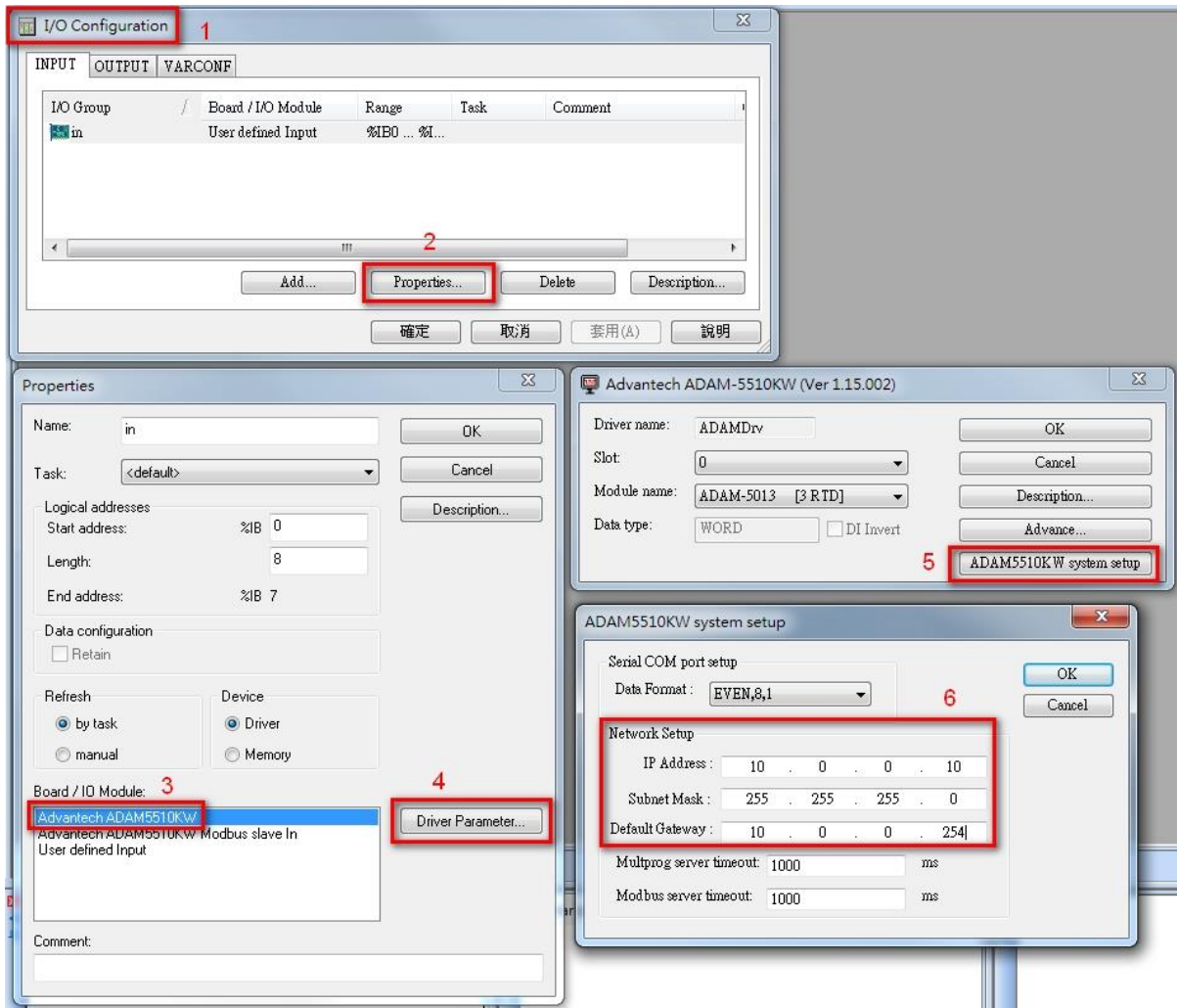
On: successful connection



Timeout: failed connection



Step 3: Choose “IO_Configuration – Properties – Advantech ADAM5510KW – Driver Parameter – ADAM5510KW system setup” then change the IP address setting.



Step 4: Rebuild the project then download the project with IP changed setting to ADAM-5510KWTP and cold restart. Furthermore, you need to click reset button to reboot the ADAM-5510KWTP. After system reboot, the new IP address will be effective. Then you can change new IP address in resource setting to connect the ADAM-5510KWTP.

