

AIM-89H

13.3" Medical-Grade Tablet with Intel® Core™ i5 processor



Features

- 13.3" Full-HD IPS projected capacitive 10-point multi-touchscreen with anti-fingerprint, anti-glare Corning® Gorilla® Glass
- Intel® Core™ i5 processor support on Windows 10/11 IoT Enterprise for high performance
- EN/UL 60601 certification, ensuring patient and medical staff safety by protecting against excessive heat and electronic interference
- Equipped with DeviceOn - iService Suite software for remote device management
- Supports touch mode with gloved operation and an active stylus pen
- IP65-rated protection from water and dust ingress
- MIL-STD-810G Shock/Vibration compliance with 4-ft drop tolerance
- Built-in Wi-Fi 6, Bluetooth 5.2, and Gigabit LAN for high speed connectivity
- 16-pin pogo connector for Desk Docking Stations and VESA Mount Bracket
- Antimicrobial design with IONPURE® on the rear cover, allowing for repeated cleaning with disinfectant



Introduction

AIM-89H tablet is a slim, rugged, multi-functional, Intel-powered 11th Core™ i5 processor high performance tablet for medical and commercial uses. The IP65 water/dustproof 13.3" IPS Full HD screen with capacitive 10-point multi-touchscreen, anti-fingerprint (AF), anti-glare (AG), Gorilla Glass, could support touch mode under glove, rain, water puddle. Built-in Wifi 6, bluetooth 5.2 and gigabit LAN supports fast, steady connectivity. Internal front (5M) and rear (8M) camera provide picture capturing wherever. MIL-STD-810G shock/vibration compliant tested on our rugged design with 4ft (1.2m) drop tolerance. ITE/Medical grade dual certification are ready for indoor and healthcare environment.

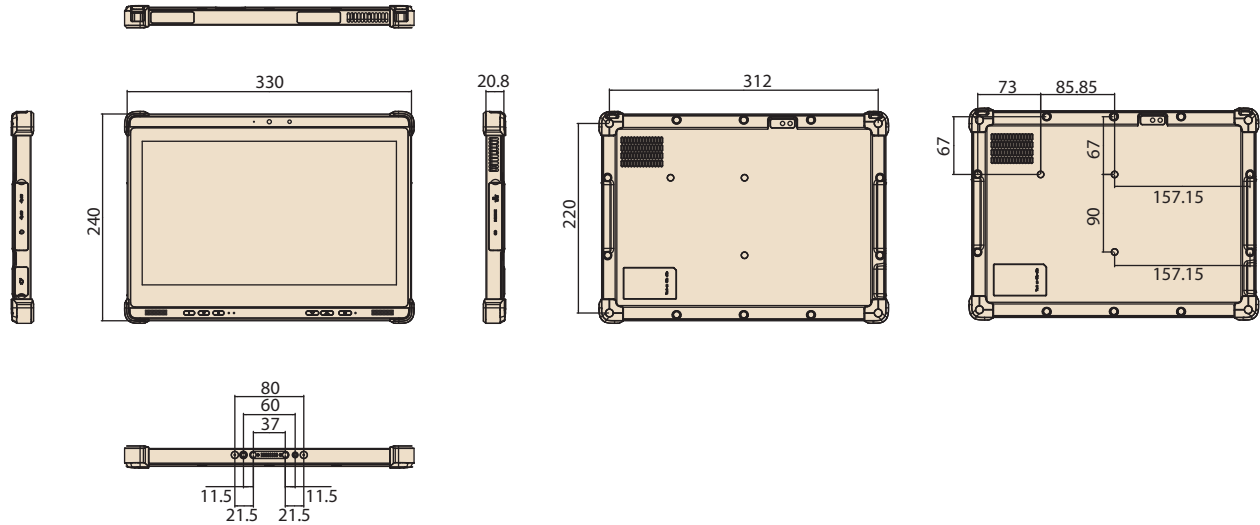
Moreover, AIM-89H is equipped with Advantech's DeviceOn - iService Suite software, which is a next-generation unified device management solution based on the WISE-DeviceOn platform. With support for batch operations and multi-device control, DeviceOn - iService Suite enables easy device configuration and deployment for convenient remote device management.

Specifications

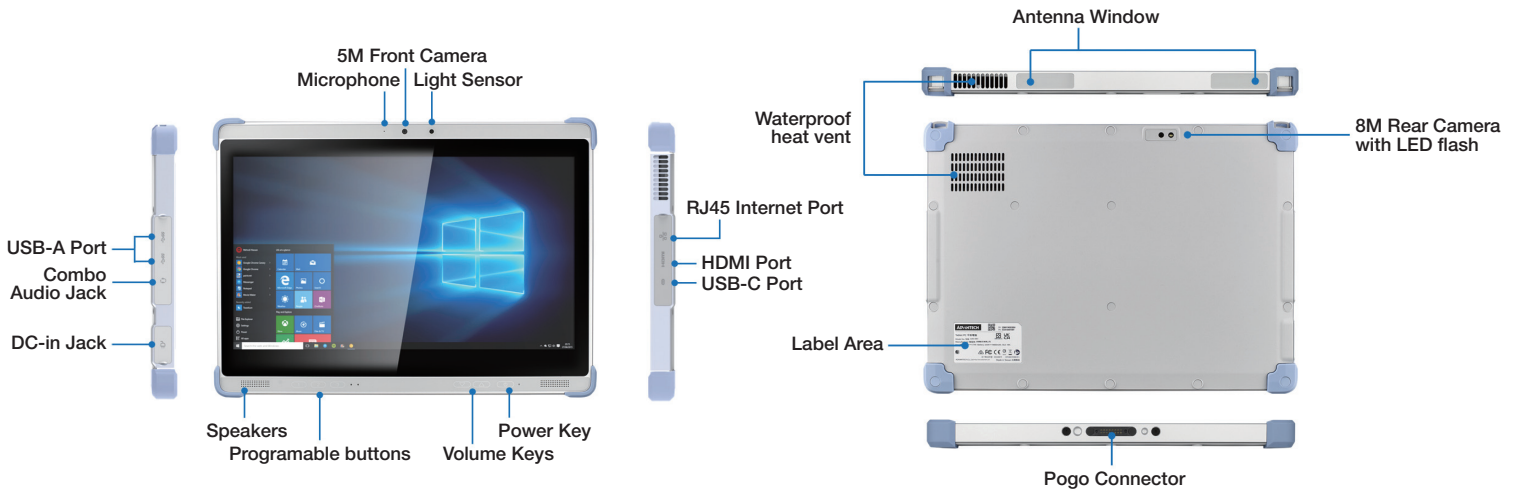
| | | | |
|------------------|-----------------------|---|-------------------------------------|
| System | Processor | Intel® Core™ i5-1145G7E Processor quad-core, 1.5 GHz (8M Cache, up to 4.10 GHz) | |
| | Memory | 8GB DDR4 | |
| | OS | Windows 10/11 IoT Enterprise (Linux OS optional) | |
| Storage | SSD | 256 GB (m.2) | |
| | Type | 13.3" IPS LCD | |
| Display | Resolution | FHD 1920x1080 | |
| | Brightness | 400 cd/m ² | |
| | Touch Type | 10-point multi-touch P-CAP touch control | |
| | Glass Type | Corning® Gorilla® Glass 3 (Anti-Fingerprint, Anti-Glare) | |
| | Touch mode | Normal (support under water puddle), Glove | |
| | Communication | WLAN | IEEE 802.11 a/b/g/n/ac/ax (Wi-Fi 6) |
| Connectivity | Bluetooth | Bluetooth® v5.2 | |
| | Standard I/O | 1 x Gigabit LAN, 1 x HDMI, 2 x USB-A 3.1 Gen 2, 1 x Audio Jack, 1 x 19 VDC-in jack, 1 x USB-C 3.1 Gen 2 (10Gb/s, HDMI Alt, 5V, 2A, Charging via AIM-89H Adaptor with DC to Type-C Dongle Accessories) | |
| | Docking | 1 x AIM docking 16-pin pogo connector: 1 x USB 3.1 Gen 2 | |
| Audio | Audio Jack | 1 x Audio combo jack (combines stereo audio output and mono microphone input) | |
| | Speaker | 2 x Internal water proof speakers (2 W) | |
| Camera | Front | 5.0-megapixel fixed-focus camera | |
| | Rear | 8.0-megapixel auto-focus camera with LED flash | |
| Sensors | | Ambient Light Sensor, G-sensor, Gyroscope | |
| Control Buttons | | 1 x Power button, 2 x Volume key (up/down), 3 x Programmable button | |
| System Indicator | | Full: green (90-100%); Charging: blue; Low: red (<10%) | |
| Power System | Input Voltage | DC jack: 19V/4.74A (90W) | |
| | Battery | Embedded Lithium-ion battery; 10.8V, 4660 mAh, 50.32 WHr Operating time: Up to 4.5 hours (depending on usage scenario) Charging time: < 3 hours | |
| Environment | Operating Temperature | 0 ~ 40 °C (32 ~ 104 °F) Discharging: 0 ~ 40 °C (32 ~ 104 °F) Charging: 0 ~ 35 °C (32 ~ 95 °F) | |
| | Storage Temperature | -20 ~ 60 °C (-4 ~ 140 °F) | |
| | IP Rating | IP65 | |
| | Shock | MIL-STD-810G standard | |
| | Vibration | MIL-STD-810G standard | |
| | Drop Tested | MIL-STD-810G standard, Up to 122 cm (4 ft) onto plywood over concrete | |
| | Humidity | Operating: 90% @ 40 °C non-condensing Storage: 95% @ 45 °C non-condensing Package: 95% @ 60 °C non-condensing | |
| Characteristics | Dimension (W x D x H) | 330 x 240 x 20.8 mm (13 x 9.4 x 0.8 in) | |
| | Weight | 1.8 kg (3.97 lb) | |
| | Color | White/Blue | |
| Certifications | | FCC, CE, UKCA, IEC/EN/UL60601-1, EN 60601-1-2, WEEE | |

Dimensions

Unit: mm



Front/Rear/Side I/O View



Ordering Information

| Part Number | CPU | Memory | Storage | Front/Rear Camera | Corner | OS |
|----------------|-----------------|--------|---------|-------------------|--------|----------------------|
| AIM-89H-100110 | Core-i5-1145G7E | 8GB | 256GB | V | Blue | Windows 10 LTSC 21H2 |
| AIM-89H-111110 | Core-i5-1145G7E | 16GB | 512GB | V | Blue | Windows 10 LTSC 21H2 |
| AIM-89H-100210 | Core-i5-1145G7E | 8GB | 256GB | V | Blue | Windows 11 GAC 22H2 |
| AIM-89H-111210 | Core-i5-1145G7E | 16GB | 512GB | V | Blue | Windows 11 GAC 22H2 |
| AIM-89H-100310 | Core-i5-1145G7E | 8GB | 256GB | V | Blue | Without OS |
| AIM-89H-111310 | Core-i5-1145G7E | 16GB | 512GB | V | Blue | Without OS |

Optional Accessories

| Part Number | Description |
|---------------|--|
| 1700001524 | Power cord (USA) UL 3P 10A 125V 183 cm |
| 1700008921-11 | Power cord (Japan) PSE 3P 7A 125V 183 cm |
| 170203180A-01 | Power Cord ASTA 3P 2.5A 250V 183cm |
| 170203183C | Power cord (EU) 3P 2.5A 250V 183 cm |

Packing List

| Description |
|--------------------|
| 1 x AIM-89H tablet |
| 1 x AC/DC adaptor |

AIM-89H Desk Docking Station



Features

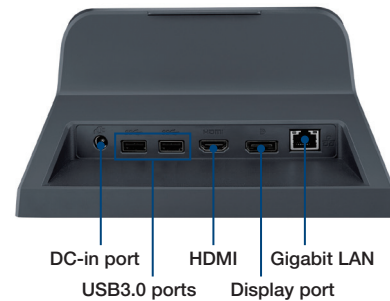
- Suitable design for office applications
- Reliable docking connector with LED indicator for connectivity
- Equipped with a variety of I/O for easy integration
- HDMI 1.3 and DP 1.1 for user quick set up extended screen
- Additional USB 3.0 ports extend peripherals like keyboard/mouse/data collection device

Specifications

| | | |
|-------------|------------------------|--|
| | | Desk Docking Station |
| I/O | | 1 x HDMI 1.3 1 x Display Port 1.1 1 x Gigabit Ethernet (RJ45) 2 x USB 3.0 Type A 1 x 5.5 mm DC in port |
| | Power | Input Voltage/Power 19V, 4.74A, 90W AC-adaptor |
| Mechanical | Dimensions (W x D x H) | 162 mm x 180 mm x 133 mm |
| | Weight | 1360 g / 2.99 lb |
| Environment | Operating Temperature | 0°C - 40°C (32°F - 104°F) |
| | Storage Temperature | -20°C - 60°C (-4°F - 140°F) |
| | Relative humidity | Operating: 10% to 80% (non-condensing) Storage: 5% to 90% (non condensing) |
| | Certifications | FCC, CE, UKCA, IEC/EN/UL60601-1 |

Dimensions

Unit: mm



Ordering Information

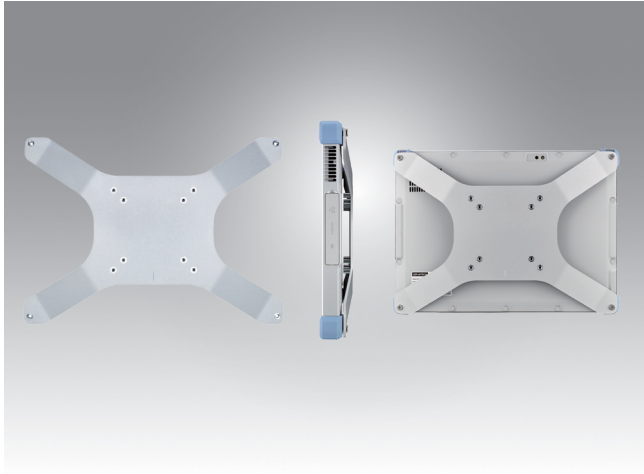
| Part Number | Description |
|---------------|--|
| AIM-OFD0-0005 | AIM-89H Desk Docking Station with full I/O |

Packing List

| Description |
|-------------------|
| 1 x AIM-OFD0-0005 |

Note: The above product does not include adapter and power cable. Customers must order AIM-89H first and pair with specific country power cable for usage.

AIM-89H VESA Mount Bracket



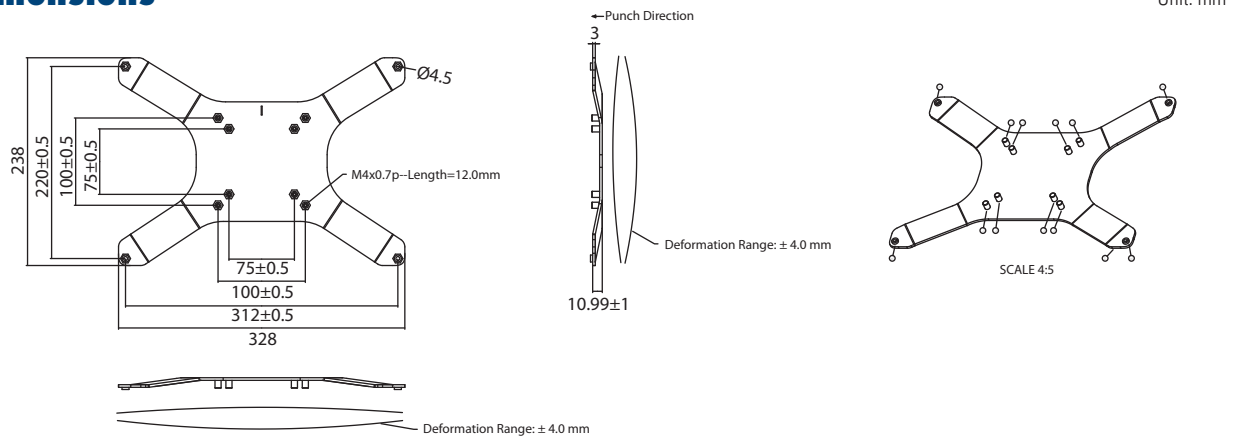
Features

- Suitable design for VESA mounting applications
- Mounted on a nursing cart or other extended station for stabilizing use
- Installed on articulating arms or wall mounts
- VESA-compliant mounting solutions (VESA MIS D Standard 75/100)

Specifications

| | | VESA Mount Bracket |
|------------|------------------------|-------------------------|
| Mechanical | Dimensions (W x D x H) | 328 mm x 238 mm x 11 mm |
| | Weight | 310g / 0.683 lb |
| Screws | Amount | 4 pcs |
| | Dimensions | M4 -0.7P * 15mm |
| | Weight | 1.8g / 0.004 lb |

Dimensions



Ordering Information

| Part Number | Description |
|---------------|--|
| AIM-VSB0-0001 | AIM-89H VESA Mount Bracket with 4 Screws |

Packing List

| Description |
|------------------------------|
| 1 x AIM-VSB0-0001 |
| 4 x Screws (M4 -0.7P * 15mm) |

AIM-89H Accessories

Carry Strap



Shoulder Strap

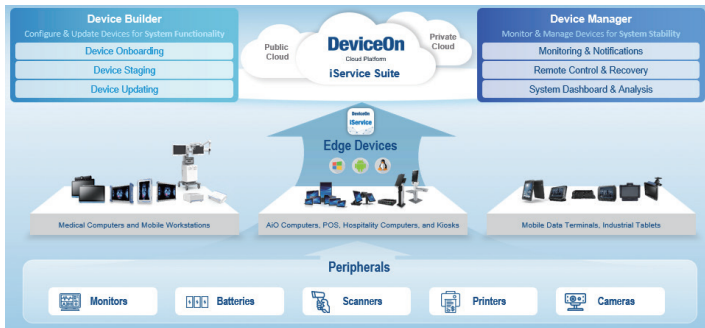


Hand Strap



| Part Number | AIM-SRP0-0006 | AIM-SRP0-0007 | AIM-SRP0-0008 |
|-------------------|--|--|---|
| Features | <ul style="list-style-type: none"> Straps with lanyard hook Enhance mobility | <ul style="list-style-type: none"> Straps with lanyard hook Enhance mobility | <ul style="list-style-type: none"> Hand Straps with 4 Screws Enhance mobility |
| Dimensions | 310 x 25 (mm) | 1280 x 60 (mm) | 338 x 235 (mm) |
| Weight | 28g / 0.0617 lb | 66g / 0.1455 lb | 68 / 0.15 lb |

DeviceOn - iService Suite



Introduction

Advantech's DeviceOn - iService Suite is an advanced remote device management solution that enables you to centrally manage your devices, minimizing the need for expensive on-site visits and saving your valuable time and resources. Device Builder ensures that your devices are always up-to-date with the latest configuration and software updates, reducing the risk of data breaches and other security threats. Meanwhile, Device Manager helps to ensure that your devices are functioning correctly, reducing downtime and enhancing productivity.

Key Functions

Device Builder



Device Onboarding

- Support Windows, Linux, Android devices
- Quick enrollment process



Device Staging

- OS configuration
- Software/peripheral watchlist
- Device label, alarm rules



Device Updating

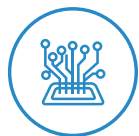
- Cloud software storage
- Installation package for multiple software updating

Device Manager



Monitoring & Notifications

- Connection/hardware status
- Software/peripheral status
- Failure notifications



Remote Control & Recovery

- Reboot & power controls
- Audio & backlight settings
- Screenshots & remote desktop



System Dashboard

- Devices working status
- Software version sync status
- Results of scheduled tasks

Services & Specifications

| Functions List | OS Platform | | | Service Type | |
|--|-------------------------------|-----------|----------------|--------------|---------|
| | Windows | Android | Linux (Ubuntu) | Builder | Manager |
| | 10, 11 | 8, 10, 12 | TBD | | |
| Device Onboarding - Enrollment, Locations and Labels | ✓ | ✓ | | ✓ | ✓ |
| Profile - OS Settings (KIOSK Mode, ON/Off Schedule, others are OS dependent) | ✓ (LTSC) | ✓ | | ✓ | ✓ |
| Profile - Alarm Rules, Software Monitoring, Peripheral Monitoring | ✓ | ✓ | | | ✓ |
| OTA Update - Installation Packs, Software Cloud Storage | ✓ | ✓ | | ✓ | ✓ |
| Monitoring - Device Hardware (CPU/RAM/Storage/Battery) | ✓ | ✓ | | | ✓ |
| Monitoring - Advanced Battery Management | ✓ (Dependant on device model) | | | | ✓ |
| Monitoring - Device Software (Running Status/CPU & Memory Usage) | ✓ | ✓ | | | ✓ |
| Monitoring - Peripherals & Display (Connect Status) | ✓ | | | | ✓ |
| Control - Audio volume & Backlight | ✓ | ✓ | | | ✓ |
| Control - Screenshot, Reboot, Shutdown | ✓ | ✓ | | | ✓ |
| Control - Schedule Tasks | ✓ | ✓ | | | ✓ |
| Control - Remote Desktop | VNC | | | | ✓ |

Ordering Information

| Ordering P/N | Cloud Type | Description |
|----------------|-------------------|---|
| 36CSDOISSASP01 | SaaS subscription | DeviceOn - iService Suite device annual fee (365 days) |
| 36CSDOISPSRP01 | On-premise server | DeviceOn - iService Suite device license (perpetual) |
| 36CSDOISPSRP02 | On-premise server | Software and installation fee for new server deployment |
| 36CSDOISPSRP03 | On-premise server | Annual maintenance fee after warranty |