

AiMC-3422

**Micro Computer with
Intel® Core™ i7/i5/i3 Processor,
Intel® H110 Chipset, 4 x Expansion
Slots, and 300W 80PLUS PSU**



Features

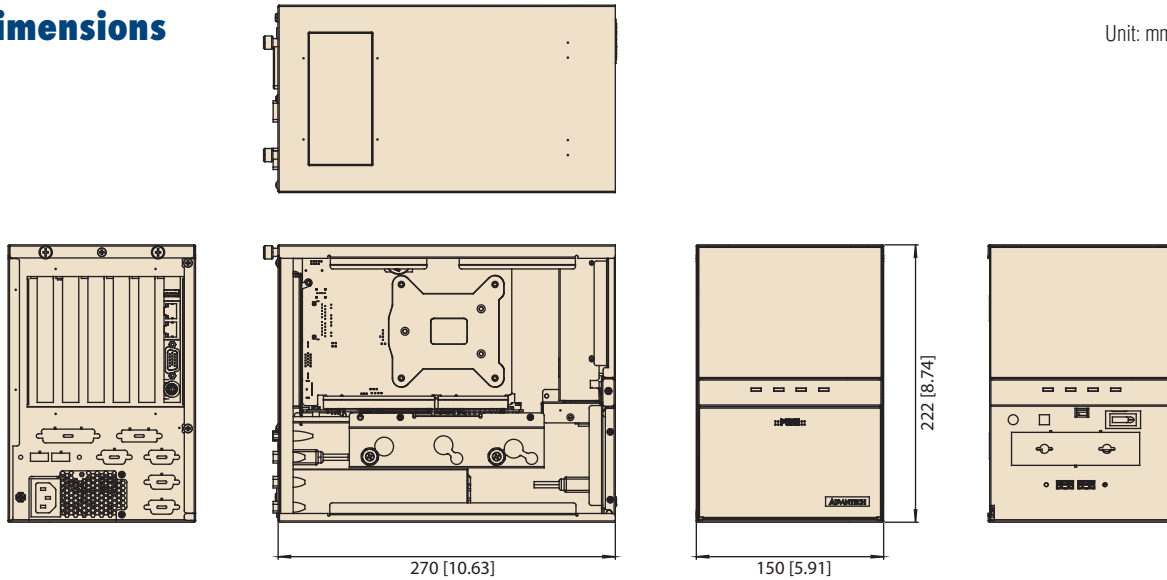
- Intel® 6th/7th Gen Core™ i7/i5/i3/Celeron® processor with Intel® H110 chipset
- Two PCIe (x16/x1) & two PCI expansion slots
- Compact design with front-accessible I/O
- 1 x VGA, 2 x GbE LAN, 2 x USB 2.0, 1 x USB 3.0, 2 x COM
- 1 x 3.5" shock-resistant HDD bay
- Reusable filter and system fan for easy maintenance
- 300W 80PLUS PSU offers energy savings

Specifications

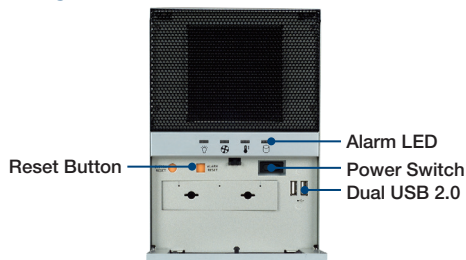
| | | | | | | | | | | | | | | | | |
|--------------------------------|-------------------------|---|---------|----------|----------|----------|-----------|---------|---------|---------|---|-----------|-----------|---------|---------|--|
| Processor | CPU | i7-7700 | i5-7500 | i3-7100E | i7-7700T | i5-7500T | i3-7101TE | i7-6700 | i5-6500 | i3-6100 | i7-6700TE | i5-6500TE | i3-6100TE | G4400TE | G3900TE | |
| | Core | 4 | 4 | 2 | 4 | 4 | 2 | 4 | 4 | 2 | 4 | 4 | 2 | 2 | 2 | |
| | Base Frequency | 3.6 GHz | 3.4 GHz | 3.9 GHz | 2.9 GHz | 2.7 GHz | 3.4 GHz | 3.4 GHz | 3.2 GHz | 3.7 GHz | 2.4 GHz | 2.3 GHz | 2.7 GHz | 2.9 GHz | 2.6 GHz | |
| | L3 Cache | 8 MB | 6 MB | 3 MB | 8 MB | 6 MB | 3 MB | 8 MB | 6 MB | 4 MB | 8 MB | 6 MB | 4 MB | 3 MB | 2 MB | |
| | TDP | 65W | 65W | 65W | 35W | 35W | 35W | 65W | 65W | 65W | 35W | 35W | 35W | 35W | 35W | |
| | Chipset | Intel® H110 | | | | | | | | | | | | | | |
| | BIOS | AMI 128Mb SPI Flash | | | | | | | | | | | | | | |
| Memory | Technology | Dual-channel DDR4 1866/2133 MHz (non-ECC) | | | | | | | | | | | | | | |
| | Max. Capacity | 32 GB (16 GB per DIMM) | | | | | | | | | | | | | | |
| | Socket | 2 x 260-pin SODIMM | | | | | | | | | | | | | | |
| Graphics | Integrated Chipset | Intel® HD Graphics | | | | | | | | | | | | | | |
| Ethernet | Interface | 2 x RJ45, 10/100/1000 Mbps | | | | | | | | | | | | | | |
| | Controller | LAN 1: Intel® i219V LAN 2: Intel® i211AT | | | | | | | | | | | | | | |
| Expansion Slots (AiMC-3422-00) | PCI Express x16 | 1 (Lower-layer slot); full height: 111.15 mm, length: max. 180 mm | | | | | | | | | | | | | | |
| | PCI Express x1 | 1 (Lower-layer slot); full height: 111.15 mm, length: max. 180 mm | | | | | | | | | | | | | | |
| | PCI | 2 (Lower-layer slot); full height: 111.15 mm, length: max. 180 mm | | | | | | | | | | | | | | |
| Expansion Slots (AiMC-3422-01) | PCI Express x16 | 1 (Lower-layer slot); full height: 111.15 mm, length: max. 180 mm | | | | | | | | | | | | | | |
| | PCI | 3 (Lower-layer slot); full height: 111.15 mm, length: max. 180 mm | | | | | | | | | | | | | | |
| SATA | Data Transfer Rate | 600 MB/s (SATA 3.0) | | | | | | | | | | | | | | |
| | HDD Bay | 1 x 3.5" internal HDD | | | | | | | | | | | | | | |
| I/O Interface | Display | VGA+DVI-D (1920 x 1200 pixel @ 60Hz) | | | | | | | | | | | | | | |
| | USB | 1 x USB 3.0, 2 x USB 2.0 (front accessible) | | | | | | | | | | | | | | |
| | Serial | 2 x RS-232 | | | | | | | | | | | | | | |
| | PS/2 | 1 | | | | | | | | | | | | | | |
| Watchdog Timer | Output | System reset | | | | | | | | | | | | | | |
| | Interval | Programmable 1 ~ 255 sec/min | | | | | | | | | | | | | | |
| Power Supply | Output Rating | AC 300W, ATX | | | | | | | | | | | | | | |
| | Input Voltage | 100 ~ 240 V _{AC} | | | | | | | | | | | | | | |
| Cooling | System Fan | 1 (9 cm/53CFM) | | | | | | | | | | | | | | |
| | Air Fan | Yes | | | | | | | | | | | | | | |
| Miscellaneous | Chassis Intrusion Alert | Yes | | | | | | | | | | | | | | |
| | LED Indicators | Power, fan, temperature, HDD | | | | | | | | | | | | | | |
| | Control | Power on/off switch, Reset button | | | | | | | | | | | | | | |
| Environment | Temperature | Operating | | | | | | | | | Non-operating | | | | | |
| | | 0 ~ 40 °C (32 ~ 104 °F) | | | | | | | | | -20 ~ 60 °C (-4 ~ 140 °F) | | | | | |
| | Humidity | 10-85% @ 40 °C non-condensing | | | | | | | | | 10-95% @ 40 °C non-condensing | | | | | |
| | Vibration | 1Gms, random, 5 ~ 500 Hz, 3 axes, 1 hr/axis | | | | | | | | | 2Gms, random, 5 ~ 500 Hz, 3 axes, 1 hr/axis | | | | | |
| | Shock | 10G, half sine wave, 11ms duration | | | | | | | | | | | | | | |
| | EMC | CE/FCC, CCC, BSMI | | | | | | | | | | | | | | |
| | Safety | UL/CB, CCC, BSMI | | | | | | | | | | | | | | |
| Physical Characteristics | Dimensions (W x H x D) | 150 x 222 x 270 mm (5.9" x 8.74" x 10.62") | | | | | | | | | | | | | | |
| | Weight | 5 kg | | | | | | | | | | | | | | |

Dimensions

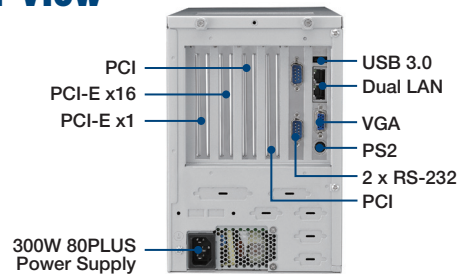
Unit: mm [inch]



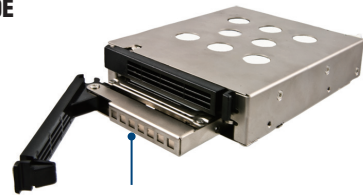
Front View



Rear View



IPC-DT-3120E



Optional mobile rack for dual 2.5" SATA HDDs with a 3.5" drive bay occupancy

Ordering Information

| Part Number | PCIe x16 | PCIe x1 | PCI |
|----------------|----------|---------|-----|
| AIMC-3422-00B1 | 1 | 1 | 2 |
| AIMC-3422-01B1 | 1 | 0 | 3 |

Packing List

| Part Number | Description | Quantity |
|----------------|-----------------------------------|----------|
| AIMC-3422 | AIMC-3422 bare system | 1 |
| 2061302902 | Driver CD | 1 |
| 1700014398-11 | 4-port USB 2.0 cable with bracket | 1 |
| 1700002223 | LPT cable | 1 |
| 1960048518N001 | Mounting bracket | 1 |
| 1990012452S000 | Rubber foot | 4 |
| 1700020277-01 | 2 port USB 3.0 cable wit bracket | 1 |

Optional Accessories

| Part Number | Description |
|------------------|---|
| 1960053207N001 | 1.5U cooler for all CPUs, supports 3 expansion slots |
| 1960053065N001 | 1U cooler for CPU iX-XXXXTX and GXXXXXX, supports 4 expansion slots |
| 1700021831-01 | DP to DVI-D cable w/ BKT |
| IPC-DT-3120E | DiskTray for 3.5" x 1 HDD to 2.5" HDD x 2 |
| PCA-COM485-00A1E | 4-port RS-485/422 module by LPC |
| PCA-COM232-00A1E | 4-port RS-232 module by LPC |
| PCA-AUDIO-HDA1E | Audio extension module with HD audio interface |
| PCA-TPM-00A1E | Trusted platform module compliant with TCG 1.2 |
| PCA-TPM-00B1E | Trusted platform module compliant with TCG 2.0 |

Note: Customers must use the Advantech proprietary CPU cooler. Other brands of CPU coolers are NOT compatible.