

AMAX-5017C

AMAX-5017V

AMAX-5017H

6-ch Current AI Module

6-ch Voltage AI Module

4-ch High Speed AI Module



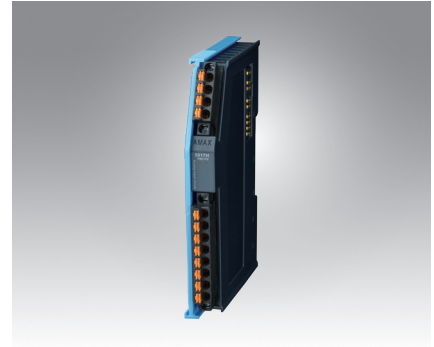
AMAX-5017C

CE FCC RoHS COMPLIANT PRODUCT



AMAX-5017V

CE FCC RoHS COMPLIANT PRODUCT



AMAX-5017H

CE FCC RoHS COMPLIANT PRODUCT

Specifications

General

- **Certification** CE, FCC class A
- **Connector** Pluggable 4P+8P push-in terminal (#24-16 AWG)
- **Enclosure** PC (UL 94V-0)
- **Power Consumption** 2W@24V_{DC}
- **Protocol** EtherCAT
- **Transmission Rate** 100Mbps
- **Distributed Clock** Supported, default inactive
- **LED Indicator** PWR, RUN

Analog Input

- **Channels** 6 (Differential)
- **Input Type** mA
- **Current Range** ±20 mA, 0 ~ 20 mA, 4 ~ 20 mA
- **Input Impedance** 120 Ω
- **Resolution** 16-bit with ±0.2% FSR accuracy @25°C
- **Sampling Rate** 100 sample/s per channel (Depends on EtherCAT cycle time)
- **Burn-out detection** Yes

Protection

- **Isolation Voltage** 2,000 V_{DC}

Environment

- **Operation Temperature** -25~60°C (vertical mounted)
- **Storage Temperature** -40~85°C
- **Relative Humidity** 95% (non-condense)

Ordering Information

- **AMAX-5017C-A** 6-ch Current AI Module

Specifications

General

- **Certification** CE, FCC class A
- **Connector** Pluggable 4P+8P push-in terminal (#24-16 AWG)
- **Enclosure** PC (UL 94V-0)
- **Power Consumption** 2.6W@24V_{DC}
- **Protocol** EtherCAT
- **Transmission Rate** 100Mbps
- **Distributed Clock** Supported, default inactive
- **LED Indicator** PWR, RUN

Analog Input

- **Channels** 6 (Differential)
- **Input Type** V, mV
- **Voltage Range** ±150 mV, ±500 mV, ±1 V, ±5 V, ±10 V
- **Input Impedance** >1M Ω
- **Resolution** 16 bit with ±0.1% FSR accuracy @25°C
- **Sampling Rate** 100 sample/s per channel (Depends on EtherCAT cycle time)

Protection

- **Isolation Voltage** 2,000 V_{DC}

Environment

- **Operation Temperature** -25~60°C (vertical mounted)
- **Storage Temperature** -40~85°C
- **Relative Humidity** 95% (non-condense)

Ordering Information

- **AMAX-5017V-A** 6-ch Voltage AI Module

Specifications

General

- **Certification** CE, FCC class A
- **Connector** Pluggable 4P+8P push-in terminal (#24-16 AWG)
- **Enclosure** PC (UL 94V-0)
- **Power Consumption** 2.5W@24V_{DC}
- **Protocol** EtherCAT
- **Transmission Rate** 100Mbps
- **Distributed Clock** Supported, default inactive
- **LED Indicator** PWR, RUN

Analog Input

- **Channels** 4 (Differential)
- **Input Type** V, mA
- **Voltage Range** ±10 V, 0~10V, 0~20mA, -20~20mA
- **Input Impedance** 800 kΩ, for voltage input
500 Ω, for current input
- **Resolution** 16-bit with ±0.1% FSR accuracy for voltage input (25°C)
16-bit with ±0.2% FSR accuracy for current input (25°C)
- **Sampling Rate** 10k sample/s per channel (Depends on EtherCAT cycle time)

Protection

- **Isolation Voltage** 2,000 V_{DC}

Environment

- **Operation Temperature** -25~60°C (vertical mounted)
- **Storage Temperature** -40~85°C
- **Relative Humidity** 95% (non-condense)

Ordering Information

- **AMAX-5017H-A** 4-ch High Speed AI Module