

AMAX-5015

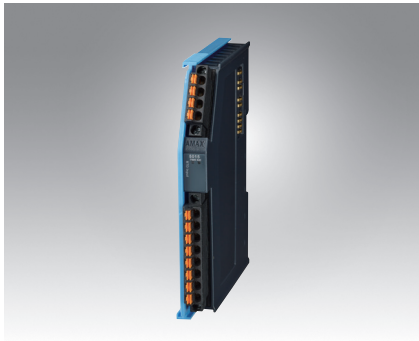
AMAX-5018

AMAX-5024

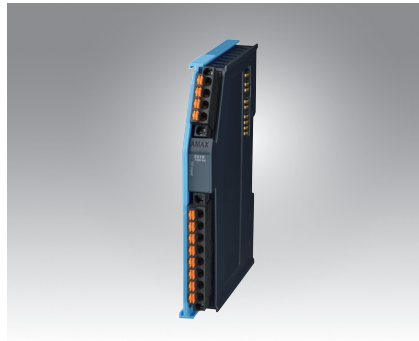
4-ch RTD Input Module

6-ch Thermocouple Input Module

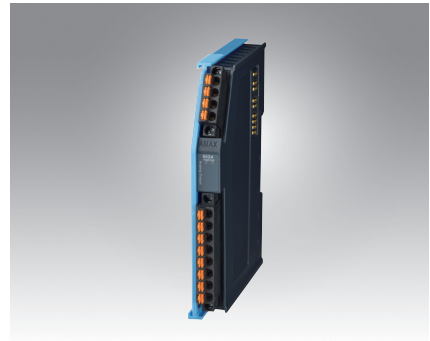
4-ch Analog Output Module



AMAX-5015



AMAX-5018



AMAX-5024



Specifications

General

- **Certification** CE, FCC class A
- **Connector** Pluggable 4P+8P push-in terminal (#24~16 AWG)
- **Enclosure** PC (UL 94V-0)
- **Power Consumption** 2W@24V_{DC}
- **Protocol** EtherCAT
- **Transmission Rate** 100Mbps
- **Distributed Clock** Supported, default inactive
- **LED Indicator** PWR, RUN

RTD Input

- **Channels** 4
- **Input Connections** 2 or 3 wire
- **Input Impedance** >10MΩ
- **Temperature Range**
 - Pt 100 RTD:
 - 50°C to 150°C
 - 0°C to 100°C
 - 0°C to 200°C
 - 0°C to 400°C
 - 200°C to 200°C
 - 200°C to 420 °C
 - Pt 1000 RTD
 - 40°C to 160°C
 - Balco 500 RTD
 - 30°C to 120°C
 - Ni 518 RTD
 - 80°C to 100°C
 - 0°C to 100°C
- **Resolution** 16 bit with ±0.1% FSR accuracy @25°C
- **Sampling Rate** 100 sample/s per channel (Depends on EtherCAT cycle time)
- **Burn-out detection** Yes

Protection

- **Isolation Voltage** 2,000 V_{DC}

Environment

- **Operation Temperature** -25~60°C (vertical mounted)
- **Storage Temperature** -40~85°C
- **Relative Humidity** 95% (non-condense)

Ordering Information

- **AMAX-5015-A** 4-ch RTD Input Module

Specifications

General

- **Certification** CE, FCC class A
- **Connector** Pluggable 4P+8P push-in terminal (#24~16 AWG)
- **Enclosure** PC (UL 94V-0)
- **Power Consumption** 2W@24V_{DC}
- **Protocol** EtherCAT
- **Transmission Rate** 100Mbps
- **Distributed Clock** Supported, default inactive
- **LED Indicator** PWR, RUN

Thermocouple Input

- **Channels** 6 differential
- **Input Type** V, mV, Thermocouple
- **Input Impedance** >2MΩ
- **Voltage Range**
 - ±50 mV, ±100 mV, ±500 mV, ±1 V, ±2.5 V
 - Type J (0 ~ 760°C)
 - Type K (-100 ~ 1370°C)
 - Type T (-100 ~ 400°C)
 - Type E (0 ~ 1000°C)
 - Type R (500 ~ 1750°C)
 - Type S (500 ~ 1750°C)
 - Type B (500 ~ 1800°C)
 - Type N (-200 ~ 1300°C)
- **Temperature Range**
- **Resolution** 16 bit with ±0.1% FSR accuracy @25°C
- **Sampling Rate** 100 sample/s per channel (Depends on EtherCAT cycle time)

Protection

- **Isolation Voltage** 2,000 V_{DC}

Environment

- **Operation Temperature** -25~60°C (vertical mounted)
- **Storage Temperature** -40~85°C
- **Relative Humidity** 95% (non-condense)

Ordering Information

- **AMAX-5018-A** 6-ch Thermocouple Input Module

Specifications

General

- **Certification** CE, FCC class A
- **Connector** Pluggable 4P+8P push-in terminal (#24~16 AWG)
- **Enclosure** PC (UL 94V-0)
- **Power Consumption** 3.5W@24V_{DC}
- **Protocol** EtherCAT
- **Transmission Rate** 100Mbps
- **Distributed Clock** Supported, default inactive
- **Distributed Clock** Default inactive
- **LED Indicator** PWR, RUN

Analog Output

- **Channels** 4
- **Output Type** V, mV, mA
- **Output Range**
 - 0~5V, 0~10V, ±5V, ±10V, 4~20mA, 0~20mA
- **Resolution** 16-bit with accuracy ±0.01% FSR@25°C
- **Slew Rate** Configurable
- **Drift** ± 50 ppm/°C
- **Current Load Resistor** Max. 500 Ω
- **Voltage Load Resistor** Min. 1KΩ
- **Current Output Resistor** 10MΩ
- **Voltage Output Resistor** 0.01Ω

Protection

- **Isolation Voltage** 2,000 V_{DC}

Environment

- **Operation Temperature** -25~60°C (vertical mounted)
- **Storage Temperature** -40~85°C
- **Relative Humidity** 95% (non-condense)

Ordering Information

- **AMAX-5024-A** 4-ch Analog Output Module