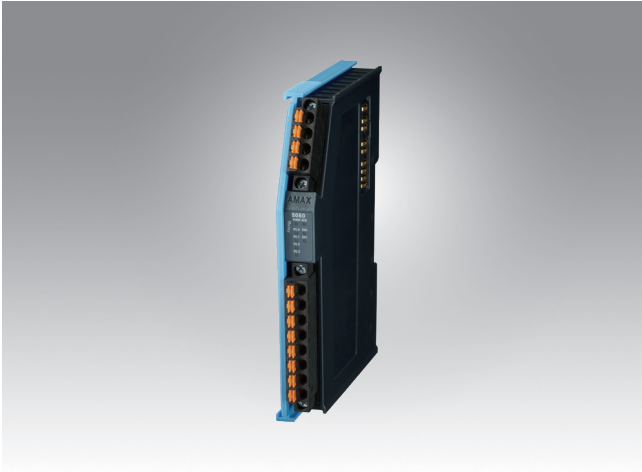


AMAX-5060

4-ch Relay with 2-ch DI Module



CE FCC 

Features

- Relay Type: Form A (SPST)
- Contact Rating: 250V_{AC} @ 5A, 30V_{DC} @ 5A
- Insulation Resistance: 1 G Ω (min.) @ 500 V_{DC}
- Breakdown Voltage: 500V_{AC} (50/60Hz)

Specifications

General

- **Certification** CE, FCC class A
- **Connector** Pluggable 4P+8P pushin terminal (#24~16 AWG)
- **Enclosure** PC (UL 94V-0)
- **Power Consumption** 2.5W@24V_{DC}
- **Protocol** EtherCAT
- **Transmission Rate** 100Mbps
- **Distributed Clock** Supported, default inactive
- **LED Indicator** PWR, R/E, R0, R1, R2, R3, DIO, DI1

Relay

- **Channels** 4
- **Relay Type** Form A (SPST)
- **Relay Delay Time** On: 6ms
Off: 3.5ms
- **Breakdown Voltage** 500V_{AC} (50/60Hz)
- **Maximum Switching Rate** 20 operations/min (at rated load)
- **Insulation Resistance** 1 G Ω (min.) @ 500 V_{DC}
- **Electrical Endurance** 50,000 operations
- **Mechanical Endurance** 20,000,000 operations (under no load at an operating frequency of 180 operations/min)

Digital Input

- **Channels** 2
- **Digital Input** Wet contact
Logic level 1: 10~30V_{DC}
Logic level 0: 0~3V_{DC}
- **Input Delay** From logic level 0 to 1: 50us
From logic level 1 to 0: 50us
- **Digital Filter** Support range: 0.1ms (4.6kHz) to 3276.8ms (0.18Hz) (3ms is default when filter enable)
- **Typical Input Current** Logic level 1: 1.2mA~4.2mA (10V~30V)

Protection

- **Isolation Voltage** 2,000 V_{DC}

Environment

- **Operation Temperature** -25~60°C (vertical mounted)
(Note: This range is for AMAX-5060 only)
- **Storage Temperature** -40~85°C
- **Relative Humidity** 95% (non-condense)

Ordering Information

- **AMAX-5060-A** 4-ch Relay with 2-ch DI Module