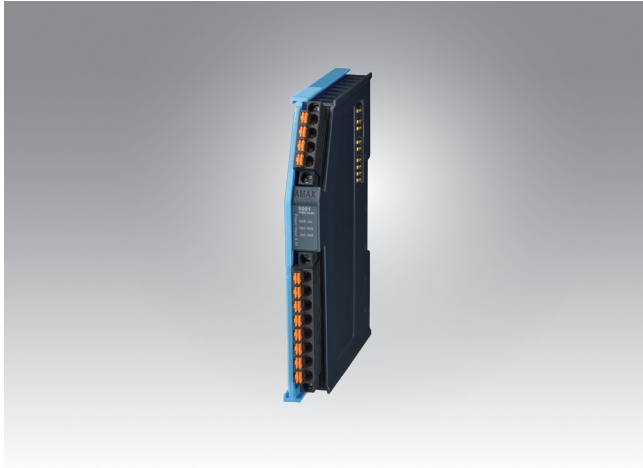


# AMAX-5001

# AMAX-5079

## 2-ch Power Input with 4-ch Digital Input EtherCAT Slice IO Module

## EtherCAT Extension Slice IO Module



AMAX-5001



### Specifications

#### General

- **Certification** CE, FCC class A
- **Connector** Pluggable 4P+8P push-in terminal (#24-16 AWG)
- **Enclosure** PC
- **Power Consumption** 2W@24V<sub>DC</sub>
- **Protocol** EtherCAT
- **Transmission Rate** 100Mbps
- **LED Indicator** PWR, RUN, Power Diagnosis LED

#### Power Input

- **Rated Voltage** 24V<sub>DC</sub> (± 20%)
- **Dual Power Input** Supported
- **Max Current on Bus** 2A
- **Diagnosis Function** Over/under voltage for input 1&2  
Over current output on bus

#### Digital Input

- **Channels** 4
- **Digital Input** Wet Contact  
Rated voltage: 24V<sub>DC</sub>  
Logic level 1: 10-30 V<sub>DC</sub> and -10--30 V<sub>DC</sub>  
Logic level 0: -3-3 V<sub>DC</sub>
- **Input Delay** From logic level 0 to 1: 4ms  
From logic level 1 to 0: 4ms
- **Digital Filter** 3ms

#### Protection

- **Isolation Voltage** 2,000 V<sub>DC</sub>

#### Environment

- **Operation Temperature** -25-60°C (vertical mounted)
- **Storage Temperature** -40-85°C
- **Relative Humidity** 95% (non-condense)

### Ordering Information

- **AMAX-5001** 2-ch Power Input with 4-ch Digital Input EtherCAT Slice IO Module
- **IPS-D22A60W24V-A** D22 DIN RAIL A/D 100-240V 60W 24V
- **PSD-A120W24** DIN Rail AC to DC 100-240V 120W 24V
- **96PSD-A240W24-DF** DIN Rail Power Supply AC to DC 100-240V 240W 24V



AMAX-5079



### Specifications

#### General

- **Certification** CE, FCC class A
- **Connector** 1 x RJ45
- **Enclosure** PC
- **Power Consumption** N/A
- **Protocol** EtherCAT
- **Transmission Rate** 100Mbps
- **LED Indicator** N/A

#### EtherCAT Extension

- **Function** Conversion of EtherCAT to 100BASE-TX Ethernet for extension of the EtherCAT network
- **Cable** Ethernet/EtherCAT cable (min. Cat. 5), shielded
- **Distance between stations** Max. 100 m (100BASE-TX)
- **Bus Interface** 1 x RJ45
- **Power from bus** N/A

#### Protection

- **Isolation Voltage** 1,500 V<sub>DC</sub> (LAN port)

#### Environment

- **Operation Temperature** -25-60°C (vertical mounted)
- **Storage Temperature** -40-85°C
- **Relative Humidity** 95% (non-condense)

### Ordering Information

- **AMAX-5079** EtherCAT Extension Slice IO Module