

AMiS Accessories

Medication Box

AMIS-M41111XX-00AE

4U Medication Box

- Rack: 1U drawer x 4
- Dimension: 499 x 331 x 381 mm (19.7" x 13" x 15")
- Material: Metal



AMIS-M41120XX-00AE

4U Medication Box

- Rack: 1U drawer x 2, 2U drawer x 1
- Dimension: 499 x 331 x 381 mm (19.7" x 13" x 15")
- Material: Metal



AMIS-M41300XX-00AE

4U Medication Box

- Rack: 1U drawer x 1, 3U drawer x 1
- Dimension: 499 x 331 x 381 mm (19.7" x 13" x 15")
- Material: Metal



AMIS-M42200XX-00AE

4U Medication Box

- Rack: 2U drawer x 2
- Dimension: 499 x 331 x 381 mm (19.7" x 13" x 15")
- Material: Metal



AMIS-M4A120XX-00AE

4U Medication Box

- Rack: Medicine Tray x 1, 1U drawer x 1, 2U drawer x 1
- Dimension: 499 x 331 x 381 mm (19.7" x 13" x 15")
- Material: Metal for main housing and drawers
Plastic for Medicine Tray



AMIS-M4AA20XX-00AE

4U Medication Box

- Rack: Medicine Tray x 2, 2U drawer x 1
- Dimension: 499 x 331 x 381 mm (19.7" x 13" x 15")
- Material: Metal for main housing and drawers
Plastic for Medicine Tray



AMIS-M4AAAAXX-00AE

4U Medication Box

- Rack: Medicine Tray x 4
- Dimension: 499 x 331 x 381 mm (19.7" x 13" x 15")
- Material: Metal for main housing and drawers
Plastic for Medicine Tray



AMIS-M6111111-00AE

6U Medication Box

- Rack: 1U drawer x 6
- Dimension: 499 x 331 x 534.4 mm (19.7" x 13" x 21")
- Material: Metal



AMIS-M6112200-00AE

6U Medication Box

- Rack: 1U drawer x 2, 2U drawer x 2
- Dimension: 499 x 331 x 534.4 mm (19.7" x 13" x 21")
- Material: Metal



AMIS-M6123000-00AE

6U Medication Box

- Rack: 1U drawer x 1, 2U drawer x 1, 3U drawer x 1
- Dimension: 499 x 331 x 534.4 mm (19.7" x 13" x 21")
- Material: Metal



Medication Box

AMIS-M6A12200-00AE

6U Medication Box

- Rack: Medicine Tray x 1, 1U drawer x 1, 2U drawer x 2
- Dimension: 499 x 331 x 534.4 mm (19.7" x 13" x 21")
- Material: Metal for main housing and drawers
Plastic for Medicine Tray



AMIS-M6A23000-00AE

6U Medication Box

- Rack: Medicine Tray x 1, 2U drawer x 1, 3U drawer x 1
- Dimension: 499 x 331 x 534.4 mm (19.7" x 13" x 21")
- Material: Metal for main housing and drawers
Plastic for Medicine Tray



AMIS-M6AAAAAA-00AE

6U Medication Box

- Rack: Medicine Tray x 6
- Dimension: 499 x 331 x 534.4 mm (19.7" x 13" x 21")
- Material: Metal for main housing and drawers
Plastic for Medicine Tray



Holder

AMIS-60-HD-00-AE

Hand Disinfection Holder

- Dimension: 127 x 101.6 x 127 mm (5" x 4" x 5")
- Weight: 0.8 kg (1.8 lbs)



AMIS-60-SH-00-AE

Sharp Container and Hand Disinfection Holder

- Dimension: 304.8 x 203.2 x 139.7 mm (12" x 8" x 5.5")
- Weight: 1 kg (2.2 lbs)



AMIS-60-SC-01-AE

Sharp Container x 2

- Dimension: 304.8 x 165.1 x 88.9 mm (12" x 6.5" x 3.5")
- Weight: 0.72 kg (1.58 lbs)



AMIS-50-MH-00-AE

Mouse Holder

- Dimension: 127 x 76.2 x 50.8 mm (5" x 3" x 2")
- Weight: 0.09 kg (0.2 lbs)



AMIS-60-BS-00-AE

Barcode Scanner Mount on Neck

- Dimension: 127 x 76.2 x 63.5 mm (5" x 3" x 2.5")
- Weight: 0.06 kg (0.13 lbs)



AMIS-50-AACN-00-AE

Glove Compartment

- Dimension: 317.5 x 228.6 x 342.9 mm (12.5" x 9" x 13.5")
- Weight: 2.76 kg (6.08 lbs)



AMiS Accessories

Basket

AMIS-60-BK-00-AE

Storage Baskets

- Dimension: 254 x 149.9 x 167.6 mm (10" x 5.9" x 6.6")
- Weight: 0.6 kg (1.3 lbs)



Infusion Equipment

AMIS-60-IF-00-AE

Infusion Frame + Mount Kit

- Dimension: 660.4 ~ 1066.8 mm (26" ~42")
- Weight: 0.8 kg (1.78 lbs)



Trash Can

AMIS-50-TC-30-AE

Binocular Nursing Trash Can

- Dimension: 500 x 440 x 440 mm (19.7" x 17.3" x 17.3")
- Capacity: 12L
- Weight: 4.2 kg (9.3 lbs)



AMIS-60-EP-00-AE

Expand Plate + Mount Kit

- Dimension: 525 x 405 x 310 mm (20.7" x 15.9" x 12.2)
- Weight: 1.5 kg (3.3 lbs)



AMIS-30E-BS-00-AE

AMIS-30EM barcode scanner holder

- Dimension: 160 x 100 x 60 mm
- Weight: 0.5 kg (1.1 lbs)



AMIS-30E-MB-00-AE

AMIS-30EP mouse and barcode scanner holder

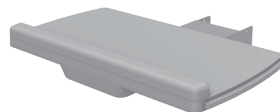
- Dimension: 510 x 280 x 140 mm
- Weight: 0.5 kg (1.1 lbs)



AMIS-30E-KB-01-AE

AMIS-30EP keyboard tray

- Dimension: 510 x 280 x 140 mm
- Weight: 0.5 kg (1.1 lbs)



AMIS-30E-KB-01-BE

AMIS-30EM keyboard tray

- Dimension: 510 x 280 x 140 mm
- Weight: 4 kg (8.8 lbs)



AMIS-M11XXXX-01BE

AMiS Medication Box 1U with 1U drawer, keylock

- Dimension: 560 x 400 x 200 mm
- Weight: 5.8 kg (12.8 lbs)



AMIS-M211XXXX-01BE

AMiS Medication Box 2U with 1Ux2 drawer, keylock

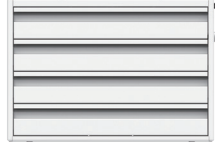
- Dimension: 610 x 435 x 305 mm
- Weight: 7.6 kg (16.8 lbs)



AMIS-M41111XX-01BE

AMiS Medication Box 4U with 1Ux4 drawer, keylock

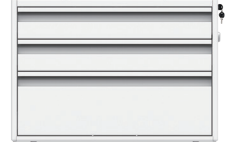
- Dimension: 600 x 430 x 480 mm
- Weight: 11.7 kg (25.8 lbs)



AMIS-M41120XX-01BE

AMiS Medication Box with 1Ux2+2Ux1 drawer, keylock

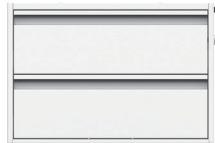
- Dimension: 600 x 430 x 480 mm
- Weight: 10 kg (22 lbs)



AMIS-M42200XX-01BE

AMiS Medication Box 4U with 2Ux2 drawer, keylock

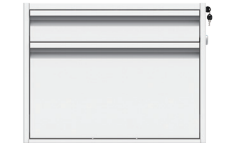
- Dimension: 600 x 430 x 480 mm
- Weight: 8.9 kg (19.6 lbs)



AMIS-M41300XX-01BE

AMiS Medication Box 4U with 1Ux1+3Ux1 drawer, keylock

- Dimension: 540 x 430 x 480 mm
- Weight: 8.3 kg (18.3 lbs)



AMIS-M4AAAAXX-01BE

AMiS Medication Box 4U with 1U bin *4, keylock

- Dimension: 600 x 430 x 480 mm
- Weight: 14.9 kg (32.8 lbs)



AMIS-M4AA20XX-01BE

AMiS Medication Box 4U with 1U binx2+2Ux1 drawer, keylock

- Dimension: 600 x 430 x 480 mm
- Weight: 11.9 kg (26.2 lbs)



AMIS-M4A120XX-01BE

AMiS Medication Box 4U with 1U bin+1U+2U drawer, keylock

- Dimension: 600 x 430 x 480 mm
- Weight: 10.2 kg (22.5 lbs)



AMiS Accessories

Storage Box

AMIS-50-SB-MAIN-AE

Main Housing (for AMiS-50)

- Dimension: 550 x 400 x 210 mm (21.65" x 15.75" x 8.27")
- Weight: 3.07 kg (6.77 lbs)



AMIS-60-SB-MAIN-AE

Main Housing (for AMiS-60)

- Dimension: 550 x 400 x 210 mm (21.65" x 15.75" x 8.27")
- Weight: 3.07 kg (3.77 lbs)



AMIS-60-SB-BIN-AE

Blue Bin

- Dimension: 109 x 84 x 95 mm (4.29" x 3.3" x 3.74")
- Weight: 0.29 kg (0.64 lbs)
- Packing: 10pcs/carton



AMIS-60-SB-DWR-AE

White Drawer

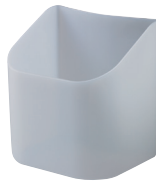
- Dimension: 230 x 184 x 81 mm (9.06" x 7.24" x 3.19")
- Weight : 0.53 kg (1.17 lbs)
- Packing 10pcs/carton



AMIS-60-SB-HDR-AE

Bottle Holder

- Dimension: 164 x 78 x 46 mm (6.46" x 3.07" x 1.81")
- Weight: 0.12 kg (0.27 lbs)
- Packing: 10pcs / carton



Storage Box Customization

Two layers are available for customization. For each layer, either white drawer or blue bin can be selected.

