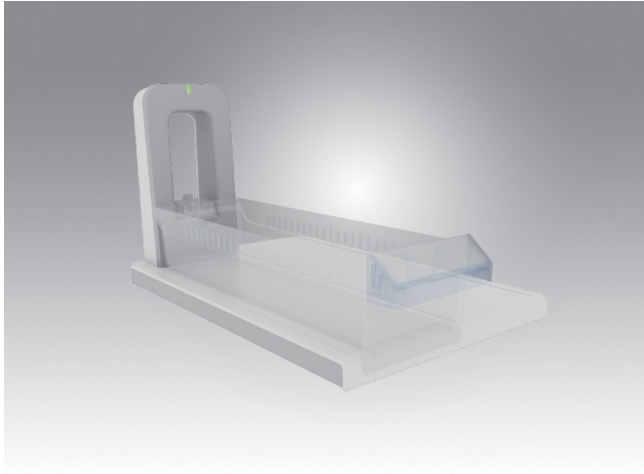


AMiS-810

RFID Based Bin Setting Station



Features

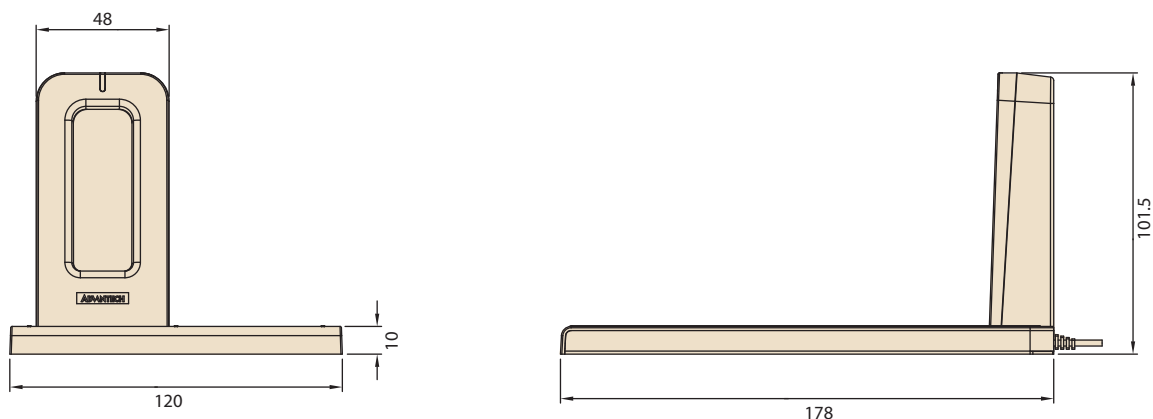
- No sharp corners design for using safe using and easy cleaning
- Easy to set up by using USB cable to connect with controlled PC. Provide Advantech SRP and open API source.
- Used for Pharmacy Bin Setting application
- RFID bin setting with assigned medication or patient identity
- Clearly keep track of medication process in CLMA

Specifications

Weight	2.8 kg
Dimensions	W 240 x D 355 x H 200 (mm) ± 30mm
Connected Interface	USB 2.0
Open API supported language	C#, Visual basic
Supported Operation System	Win 7, Win 10
Setting instruction	Set up the RFID Bin on the setting plate
RFID Bin	ISO 15693 (NFC)
Bin Dimensions	W95*D295*H60 (mm)

Dimensions

Unit: mm



Order Information

Part Number	Setting station	Computer
AMiS-810S000C	Yes	N/A
AMiS-810S054C	Yes	POC-421, 21.5", I5, 8G RAM, 256G SSD, WIN 10