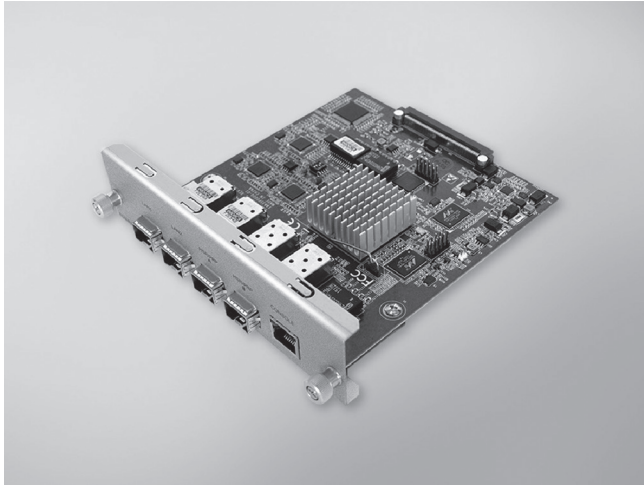


ECU-P1524PE

2-Port SFP Gigabit Base Ethernet Card with HSR/PRP



Features

- CE/FCC certification
- Supports HSR protocol (IEC 62439-3, Clause 5)
- Supports PRP protocol (IEC 62439-3, Clause 4)
- PCI Express extension
- 2 x SFP Interface (for Ethernet communications)
- 2 x SFP interface (for HSR/PRP)
- 1 x RJ45 (Interlink)
- Supports IEEE 1588
- -25 ~ 70°C operating temperature range

Introduction

The ECU-P1524PE is a PCIe extension card with HSR/PRP functionality for reducing the data transfer packet loss probability and ensuring seamless system switching. The ECU-P1524PE can be integrated with a power and energy automation computer, such as UNO-4673A/4683 or ECU-4784, to provide a redundant Ethernet solution for smart substation applications.

Specifications

General

- **Connector** 120-pin connector for UNO- 4673A/4683/ECU-4784
- **BUS Interface** PCI Express (non-universal interface)
- **Dimensions** 5.3 x 6.0" (136 x 150 mm)
- **Power Consumption** 5V ± 5% @ 1000mA typical
3.3V ± 5% @ 600mA typical
- **Certification** CE, FCC, IEC-61850-3

Communication Interface

- **Ethernet** 2x SFP (mini-GBIC) Ethernet ports with HSR/PRP (Gigabit Base-X, ECU-P1524PE-GAE)
2 x SFP (mini-GBIC) Gigabit Base-X Ethernet port (100Mbps Base-FX, ECUP1524PEA1601E-T)
- **LED Status** 2 x Act/Link (On ECU-4784 front panel)

HSR/PRP

- **Mode Selection** Hardware
- **LED Status** 2 x Act/Link, 1 x HSR, 1 x PRP, 2 x 100M/1000M (On ECU-4784 front panel)
- **Interface** 2x SFP (mini-GBIC) ports
1x RJ45 (Interlink)

Environment

- **Operating Temperature** -25 ~ 70°C (-13 ~ 158°F)
IEC 60068-2-2 with 100% CPU/ I/O loading for 24 hours
- **Operating Humidity** 5 ~ 95% RH (non-condensing)
- **Storage Humidity** 5 ~ 95% RH (non-condensing)

Ordering Information

- **ECU-P1524PE-GAE** 2-port SFP Gigabit Base-X Ethernet Card with HSR/PRP
- **ECUP1524PEA1601E-T** 2-port SFP 100Mbps Base-FX Ethernet Card with HSR/PRP