

EKI-2526M/S

4+2 100FX Port Multi-Mode/Single Mode Unmanaged Industrial Ethernet Switch



EKI-2526S

EKI-2526M-ST



Features

- Provides 4 x 10/100 Mbps Ethernet ports with RJ45 connector
- Provides 2 x 100 Mbps Multi-mode SC type fiber optic port (EKI-2526M)
- Provides 2 x 100 Mbps Single-mode SC type fiber optic port (EKI-2526S)
- Supports full/half duplex flow control
- Supports MDI/MDI-X auto crossover
- Provides broadcast storm protection
- Provides redundant 12 ~ 48 VDC power input
- Provides flexible mounting: DIN-rail and Wall mount

Introduction

EKI-2526M/2526S are industrial-grade Ethernet switches that enable you to expand your industrial network fast and cost-effectively. The EKI-2526M/2526S have four 10/100 Mbps Ethernet ports, and additionally the EKI-2526M provides one or two multi-mode fiber-optic ports, while the 2526S provide one or two single-mode single-mode fiber-optic ports. Using fiber-optics, you can prevent noise from interfering with your system and supports high-speed (100 Mbps) and highdistance (up to 30 km) transmissions.

EKI-2526M/2526S have industrial-grade designs, assuring high reliability and stability in harsh environments, making it a robust bridge between enterprise fiber-optic backbones and Ethernet devices. EKI-2526M/2526S includes a switch controller that can automatically sense transmission speeds. The RJ45 interface can also be autodetected, so MDI or MDI-X is automatically selected and a crossover cable is not required. All the Ethernet ports have memory buffers that support the store and forward mechanism, assuring all data is transmitted properly.

Specifications

Communications

- **Standard** IEEE 802.3, 802.3u, 802.3x
- **LAN** 10/100Base-T (X), 100Base-FX
- **Transmission Distance** Ethernet: Up to 100 m
Multi-mode Fiber: Up to 2 km (EKI-2526M)
Single-mode Fiber: Up to 30 km (EKI-2526S)
- **Transmission Speed** Up to 100 Mbps
- **Optical Fiber**
Multi-Mode (EKI-2526M)
Wavelength: 1310nm
Tx Power: -14/-20 dBm
Rx Sensitivity: -31 dBm
Parameters: 50/125 um, 62.5/125 um
Single-Mode Wavelength: 1310 nm
(EKI-2526S)
Tx Power: -8/-15 dBm
Rx Sensitivity: -34 dBm
Parameters: 9/125 um

Interface

- **Connectors** 4 x RJ45 ports
2 x SC type fiber connector (EKI-2526M/S)
6-pin removable screw terminal (Power & Relay)
- **LED Indicators** P1, P2, ALM
10/100TX: Link/Activity, Duplex/Collision

Power

- **Power Consumption** EKI-2526M: Max. 6.41 W
EKI-2526S: Max. 6.45 W
- **Power Input** 12 ~ 48 V_{DC}, redundant dual inputs
- **Fault Output** 1 Relay Output

Mechanism

- **Dimensions (W x H x D)** 37 x 140 x 95 mm (1.46" x 5.51" x 3.74")
- **Enclosure** IP30, Metal shell with solid mounting kits
- **Mounting** DIN-rail, Wall

Protection

- **Reverse Polarity** Present
- **Overload Current** Present

Environment

- **Operating Temperature** -10~60°C (14~140°F)
- **Storage Temperature** -40 ~ 85°C (-40 ~ 185°F)
- **Operating Humidity** 5 ~ 95% (non-condensing)
- **Storage Humidity** 0 ~ 95% (non-condensing)
- **MTBF** 610,453 hours

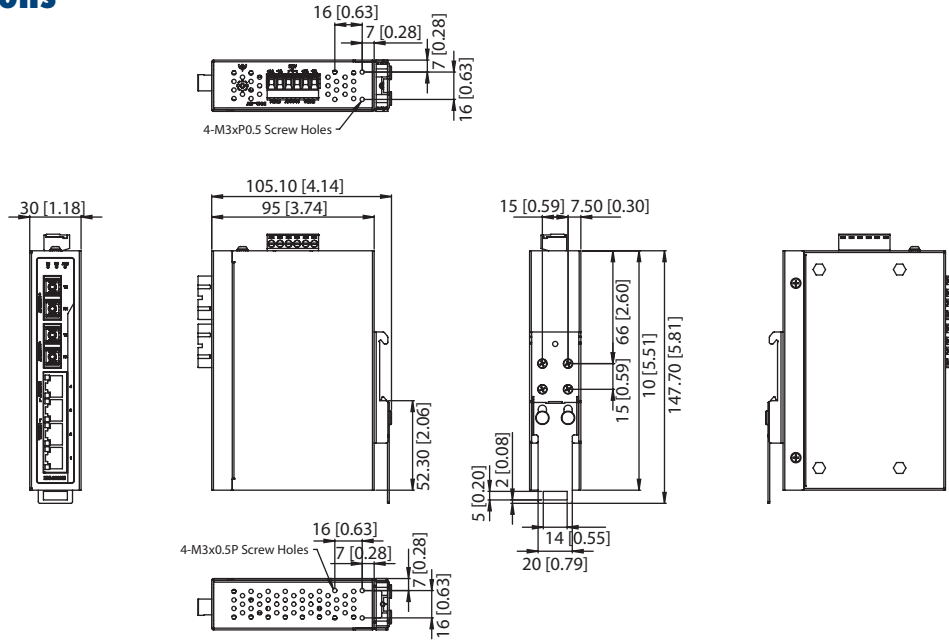
Certification

- **Safety** UL 60950, LVD EN 62368
- **EMI** CE, FCC Class A
- **EMs** EN 61000-4-2, EN 61000-4-3, EN 61000-4-4
EN 61000-4-5, EN 61000-4-6, EN 61000-4-8
- **Shock** IEC60068-2-27
- **Freefall** IEC60068-2-32
- **Vibration** IEC60068-2-6

Dimensions

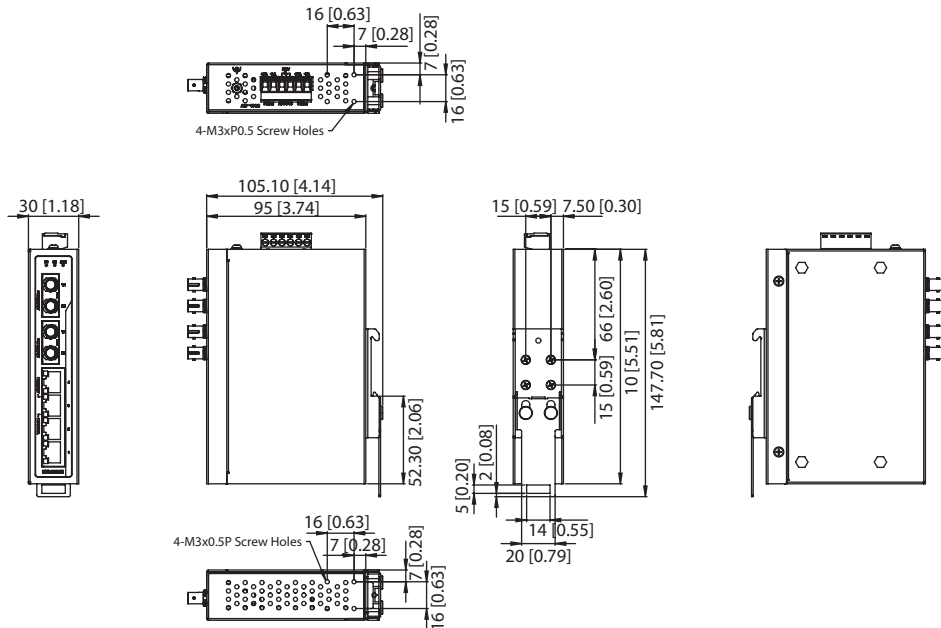
Unit: mm [inch]

EKI-2526M



Outline Dimension: EKI-2526M-BE: 30 x 140 x 152 mm (1.18" x 5.514" x 3.74")

EKI-2526M-ST



Outline Dimension: EKI-2526M-ST-BE: 30 x 140 x 152 mm (1.18" x 5.514" x 3.74")

Ordering Information

- EKI-2526M-BE 4-port Ethernet Switch w/ 2-port 100FX Multi-mode
- EKI-2526S-BE 4-port Ethernet Switch w/ 2-port 100FX Single-mode
- EKI-2526M-ST-BE 4-port Ethernet Switch w/ 2-port 100FX Multi-mode (ST type connector)