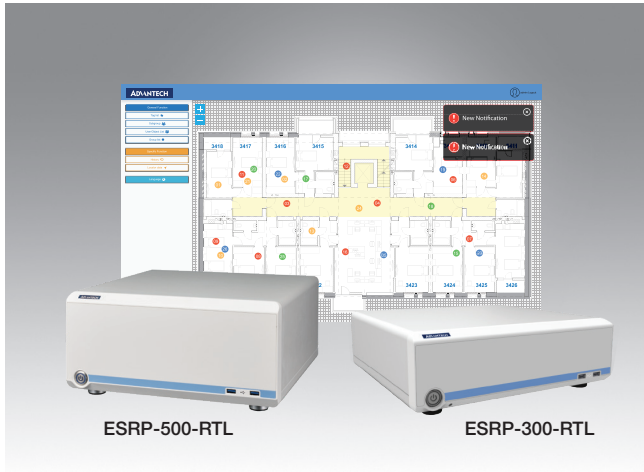


# ESRP-300-RTL ESRP-500-RTL

## Edge-Server for Real-Time Location System



### Features

- RTLS Application Advantage
  - Asset management
  - Efficient OR management
  - Infection control
  - Quality care
  - Patient and visitor procession
  - General management
- Stylish and user friendly outlook for Hospital Environment
- Runs on Intel 8th generation processor for high performance and reliability
- Rich expansion for multi-purpose application
- Reliable platform for 24x7 operation for medical use

### Introduction

Advantech's real-time location system (RTLS) is a solution-ready package (SRP) enabling the immediate location tracking and status monitoring of medical equipment, staff, and patients. The healthcare sector strives to improve patient experiences, reduce delays, and maintain a high quality of care. Using RTLS, healthcare providers can identify, locate, and track assets and resources; yielding a productive, efficient, and safe work environment.

### Key Functions

#### Basic Location Tracking



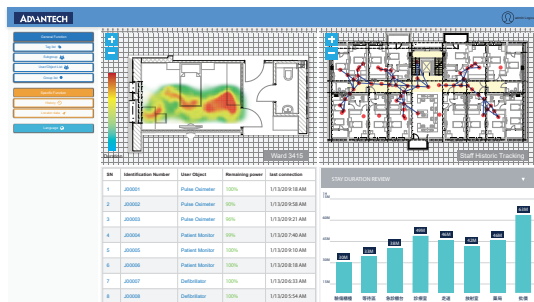
- Patient, personnel, and asset location
- Tag information display
- Alarms and notifications
- Emergency button
- 2/2.5D map support
- Multi-lingual support
- Quick zoom in/out

#### Quick Sorting and Classification

ID	Identification Number	User Object	Remaining power	last connection	current area	current floor	Status	Operation
1	J00001	Section Pump Unit	100%	1/13/20 9:18 AM	RM15-2	14F	Green	Close
2	J00002	Section Pump Unit	90%	1/13/20 9:58 AM	RM15-1	14F	Green	Return
3	J00003	Section Pump Unit	90%	1/13/20 9:21 AM	RM15-2	14F	Green	Return
4	J00004	Pulse Oximeter	99%	1/13/20 7:40 AM	RM27	14F	Green	Return
5	J00005	Pulse Oximeter	100%	1/13/20 9:10 AM	RM11-4	14F	Green	Return
6	J00006	Pulse Oximeter	100%	1/13/20 8:18 AM	Pub	14F	Green	Return
7	J00007	Infant Monitor	100%	1/13/20 8:33 AM	RM15-1	14F	Green	Return
8	J00008	Infant Monitor	100%	1/13/20 9:54 AM	RM12-3	14F	Green	Return
9	J00009	Defibrillator	91%	1/13/20 2:20 AM	RM16	14F	Green	Return
10	J00010	Defibrillator	100%	1/13/20 8:38 AM	Pub	14F	Green	Return

- Status overview
- Grouping by color/category
- Asset/patient classification
- Quick search functionality

#### Movement Record Analysis



- Hot spot analysis
- Contact info review
- Record patient movements
- Duration of stay review
- Location and status monitoring

## Specifications

		ESRP-500-RTL	ESRP-300-RTL
Computing System	CPU	Intel CORE 3.2G 12M 1151P 6CORE I7-8700	Intel CORE 3G 9M 1151P 6CORE I5-8500
	Memory	Dual 4G SO-DDR3-1600 512X8 1.35V&1.5V SAM	8G SO-DDR4-2666 1GX8 1.2V SAM
	Default Storage	512GB SSD and Optional 4TB HDD	512GB SSD and Optional 4TB HDD
Storage	HDD1	2.5" HDD or SSD	2.5" HDD or SSD
	HDD2	2.5" HDD or SSD	2.5" HDD or SSD
I/O	HDMI	Support max resolution 4096x2160 @60Hz	Support max resolution 4906x2160
	eDP	Support max resolution 4096x2160 @60Hz	Support max resolution 4906x2160
	DVI-D	Support max resolution 1920x1200 @60Hz	Support max resolution 1920x1200
	Serial	1 I/O(RS232/422/485) 3 RS232 from pin header to rear panel)	
	Ethernet	Intel I219LM and Intel I211AT	
Accessory	OS	Windows 10 Professional	Window 10 Professional
Power Supply	1U ATX	High Efficiency Power Supplier 500W	High Efficiency 250W
Warranty	2 years	2 years	2 years
Physical Characteristics	Dimension	320x132x310mm	320x88x310mm
	Weight	10kg (without MB and HDD)	6kg
Environment		Operating	Non-Operating
	Temperature	0 ~ 40 °C (32 ~ 104 °F)	-40 ~ 70 °C (-40 ~ 156 °F)
	Humidity	10 ~ 95% @ 40 °C, non-condensing	10 ~ 95% @ 60 °C, non-condensing
	Vibration	1Grms	2Grms
	Shock	10G (with 11ms duration, half sine wave)	

## Ordering Information

Product name	Part Number	Description
Edge Server for RTLS	ESRP-RTL-300	Intel Core i5-8500, 16G, Win 10, support 300pcs devices
Edge Server for RTLS	ESRP-RTL-500	Intel Core i7-8700, 16G, Win 10, support 500pcs devices
RTLS Software (4 Levels by option)	31ASRTLS500	RTLS SW for 500 m <sup>2</sup> (5381.96 sq ft)
	31ASRTLS2000	RTLS SW for 2000 m <sup>2</sup> (21527.8 sq ft)
	31ASRTLS3000	RTLS SW for 3000 m <sup>2</sup> (32291.7 sq ft)
	31ASRTLS5000	RTLS SW for 5000 m <sup>2</sup> (53819.6 sq ft)

## Other RTLS Relevant Ordering Information

Product Name	Product Number	Description
Locator	USM-110W-NOL1	BLE4.2 base NXP i.MX6 Medical IoT Gateway w single Lan 5 USB
Locator	USM-110W-NOL2	BLE5.0 base NXP i.MX6 Medical IoT Gateway w single Lan 5 USB
Tag	LEO-L02-U00	BLE RTLS Tag, Standard Fastener
Band Bracket	LEO-L02-W00	BLE RTLS Tag, Wearable Fastener 220mm
Band Bracket	LEO-L02-W01	BLE RTLS Tag, Wearable Fastener 330mm
Badge Bracket	LEO-L02-W02	BLE RTLS Tag, Wristband
Rackmount Server	VEGA-7010	1U High Density Video Server for Multi-channel 4K/8K HEVC Encoding and Decoding
Display	DSDP-0554K	55" 4K2K Ultra HD PCAP Touch Signage
Mobile Device	AIM-55AT-12301001	Intel x5-Z8350 Cherry Trail 1.44GHz 4GB+64GB WiFi Win10 IoT 64 bit