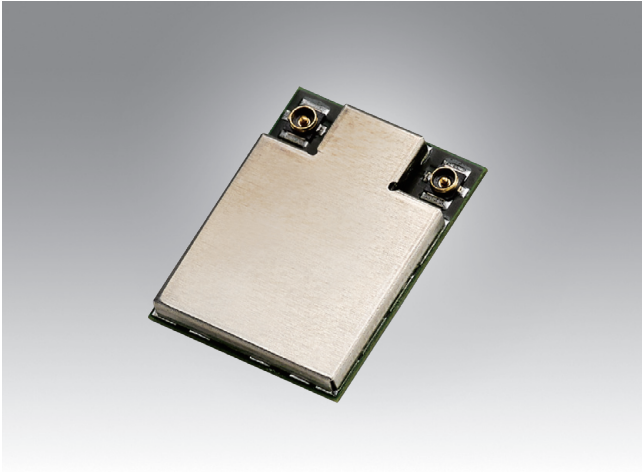


EWM-W306S01E

IEEE 802.11 a/b/g/n/ac + Bluetooth 5.3
M.2 1216 solder down LGA type



CE FCC 

Features

- IEEE 802.11 a/b/g/n/ac + Bluetooth 5.3
- 2Tx/ 2Rx
- Up to 866.7 Mbps data rate
- Bluetooth 5.3 compliant with Bluetooth 2.1 + Enhanced Data Rate (EDR)
- Operating temperature: -30 ~ +85° C

Specifications

Main Chipset	NXP 88W8997
Tx/Rx	2Tx/ 2Rx
Standard Conformance	IEEE 802.11 a/b/g/n/ac+BT 5.3
Form Factor	M.2 1216 solder down LGA
Interface	Wi-Fi: SDIO BT: UART Wi-Fi: PCIe BT: UART
Operation Voltage	DC 3.3V ±5%
Antenna	ANT1: WiFi -->TX/RX ANT2: WiFi+BT-->TX/RX
Security	1. WAPI 2. WEP 64-bit and 128-bit encryption with H/W TKIP processing 3. WPA/WPA2/WPA3 (Wi-Fi Protected Access) AES-CCMP hardware implementation as part of 802.11i security standard
O.S Supported	Linux OS
Temperature Ranges	Operation: -30 ~ +85° C
Dimensions (L x W x H)	12 x 16 x 1.85 mm

Ordering Information

Part No.	Product Description
EWM-W306S01E	IEEE 802.11 a/b/g/n/ac, NXP 88W8997, 2T2R, BT5.3, M.2 1216

Suggested Antenna and Cable

Part No.	Specifications
1750008717-01	WiFi 2.4 GHz and 5 GHz dipole Antenna
1750008799-01	WiFi Coaxial Cable, 150 mm
1750008653-01	WiFi Coaxial Cable, 200 mm
1750007965-01	Wi-Fi coaxial cable, RP-SMA (F) to MHF4, 300mm