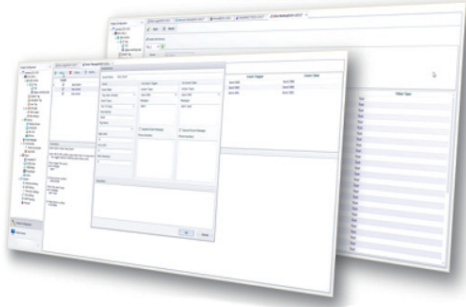


EdgeLink

Intelligent IoT Gateway Software Designed to Create Connections for Any Devices



EdgeLink

Features

- Lightweight gateway software for uploading data from the edge to the cloud
- Supports communication with 200+ PLCs and IO modules
- Equipment data integrated into middleware with secured data conversion
- Data Publishing capabilities via OPC-UA, Modbus, DNP3, IEC-104, BACnet, MQTT and LwM2M
- Data Backups to a database or FTP Server
- Provide event management and simple logic programming tools for pre-processing the collected data
- Provides DCTag SDK and Restful API for customers customizing applications
- Support containerized deployment*

*Devices MUST have docker installed for containerized deployment.

Introduction

EdgeLink, a versatile IoT gateway software, is engineered to connect with over 200 edge devices and diverse platforms. It adeptly supports multiple protocols, unifying data sources, optimizing data processing, and publishing data to mainstream platforms or other automation systems through cellular, 4G, 5G, Wi-Fi networks, and VPN connections.

Feature Details

Connectivity

EdgeLink automates data transmission and facilitates communication between devices.

Protocol Conversion

EdgeLink converts protocols for communication and compatibility.

Data Logger

EdgeLink imports tags directly, logging data with timestamps without additional editing.

Alarms

EdgeLink serves as an event hub, monitoring devices in the IoT system and notifying abnormalities via email or SMS.

Open Development Kit

EdgeLink supports an Open Development Kit, providing programmatic access to software applications.

Security

EdgeLink ensures secure data conversion with whitelisting, SSL encryption, data authority management, and open VPN.

Containerized Deployment

Applications in EdgeLink containers deploy easily across diverse operating systems and hardware platforms. (The container version differs from hardware SKU varieties due to distinctions in hardware configurations.)

Specifications

Project Based Management

- Excel Import/Export

Data Center

- IO Tag
- User Tag
- Calculation Tag
- Statistics Tag
- System Tag

(Max number of tags varies from the performance of the hardware. Confirm with representative for details.)

Data Storage

- Data Logger SD Card/ U Disk
- Data Backup FTP Server/ SQL Server/ MySQL/ ORACLE

Data Logics

- Event Manager SMS/ Email
- KW Settings
- Data Transfer

Data Service

- Modbus Server
- IEC60870-104 Server
- DNP3.0 Outstation
- BACnet
- OPC UA
- WASCADA (WebAccess)

Data Publish (Cloud)

- EdgeSync 360/EdgeHub
- IoTSuite/DataHub
- EdgeSync 360/WebAccess.SCADA
- WISE-PaaS/DataHub
- DeviceOn/BI
- SimpleMQTT
- CustomMQTT
- Aliyun
- AWS
- Baidu
- Cumulocitylot
- Google Cloud IoT Core
- IoTConnect
- ThingsBoard
- iSysCore OS
- MindSphere
- supOS
- Proudsmart
- Sparkplug(B)
- T-System
- Azure
- LwM2M

Gateway

- Pass Through
- Modbus Gateway

Connectivity

- Active Connection
- VPN

Advantech VPN
WISE-PaaS VPN
Dandelion VPN
Open VPN
remote.it

- VCOM
- Serial Port Bridge

Supported Driver List

- [Click to download Supported Driver List.](#)
- For updated drivers list, please contact representatives for details.

Ordering Information

Following licenses are to be redeemed from WISE-Marketplace only.

- **32WAEDLK0001B1** EdgeLink Basic Functions Container (x86 Platforms)
- **32WAEDLK0001C1** IEC61850 Driver, additional license required based on standard EdgeLink.