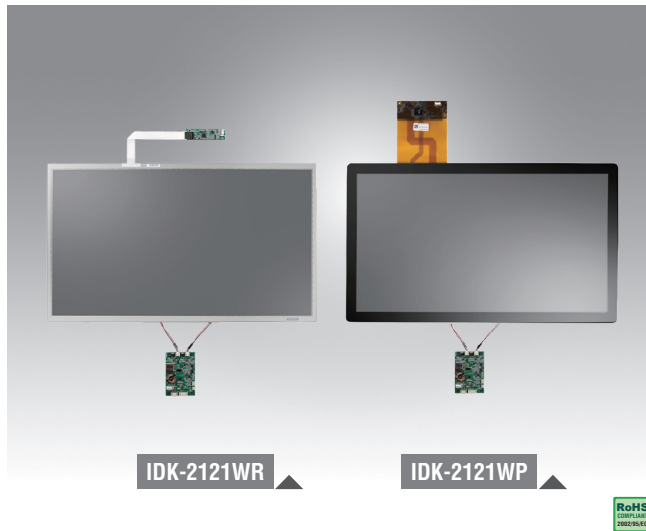


# IDK-2121W

## 21.5" FHD 1, 200 cd/m<sup>2</sup> Ultra High Brightness Industrial Display Kit



### Features

- 21.5" LCD supports 1920 x 1080 pixels and wide operating temperature (0 ~ 60 °C)
- Ultra-high brightness of 1200 cd/m<sup>2</sup> with LED backlight
- Superior sunlight readability
- LVDS signal interface
- Low power consumption
- 5W resistive / Projected capacitive touch solution
- Anti-Reflection surface treatment (customized request)
- Manually VR brightness control (customized request)
- Auto-dimming solution with light sensor (customized request)
- Optical bonding (customized request)

### Introduction

The Advantech IDK-2121W series comes with a 21.5" 1200 cd/m<sup>2</sup> industrial grade LCD display, and an LED driver board. The series is also available with flexible options for 5-wire or Projected capacitive touch screens and enhanced treatment such as Anti-Reflection surface treatment and optical bonding solution. IDK-2121W series supports 1200 cd/m<sup>2</sup> high brightness with low power consumption at the maximum consumption. Equipped with high level of brightness and wide operating temperature, IDK-2121W provides superior sunlight readability and is perfect for applications whether in semi-outdoor or outdoor environments.

### Specifications

	Model	IDK-2121WN-K2FHB1	IDK-2121WR-K2FHB1	IDK-2121WP-K2FHB1
Display	Size	21.5" LED backlight panel	21.5" LED backlight panel	21.5" LED backlight panel
	Resolution	1920 x 1080 (FHD)	1920 x 1080 (FHD)	1920 x 1080 (FHD)
	Display mode	Normally Black	Normally Black	Normally Black
	Viewing Angle(U/D/L/R)	89°/89°/89°/89°	89°/89°/89°/89°	89°/89°/89°/89°
	Brightness (Center)	1200 (cd/m <sup>2</sup> )	1200 (cd/m <sup>2</sup> )	1200 (cd/m <sup>2</sup> )
	Contrast Ratio	1000:1	1000:1	1000:1
	Response Time (ms)	22 (typ.)	22 (typ.)	22 (typ.)
	Colors	16.7M	16.7M	16.7M
	Voltage	5V	5V	5V
	Power Consumption	39 W	39 W	39 W
	Signal Interface	2 channel LVDS	2 channel LVDS	2 channel LVDS
	Weight	1800 g	2600 g	2600 g
	Dimensions (W x H x D)	497.7 x 292.2 x 10.5 mm	497.7 x 292.2 x 10.5 mm	497.7 x 292.2 x 10.5 mm
LED Driver Board	Efficiency	90%	90%	90%
	Input Current & Voltage	3250 mA / 12 V (Max.)	3250 mA / 12 V (Max.)	3250 mA / 12 V (Max.)
	Dimensions (W x H x D)	80 x 54.2 x 10 mm	80 x 54.2 x 10 mm	80 x 54.2 x 10 mm
Touch Screen	Touch Screen	NA	5-wire Resistive	Projected Capacitive
	Transparency	NA	80± 3%	87± 2%
	Interface	NA	USB	USB
	Surface Treatment	NA	AG	Clear
	Black Print	NA	NA	Yes
	Durability	NA	10 million times	No limit
Environment	Operating Temperature	0 ~ 60 °C	0 ~ 60 °C	0 ~ 60 °C
	Storage Temperature	-20 ~ 60 °C	-20 ~ 60 °C	-20 ~ 60 °C
	Humidity	10 ~ 90% @ 40 °C, non-condensing		

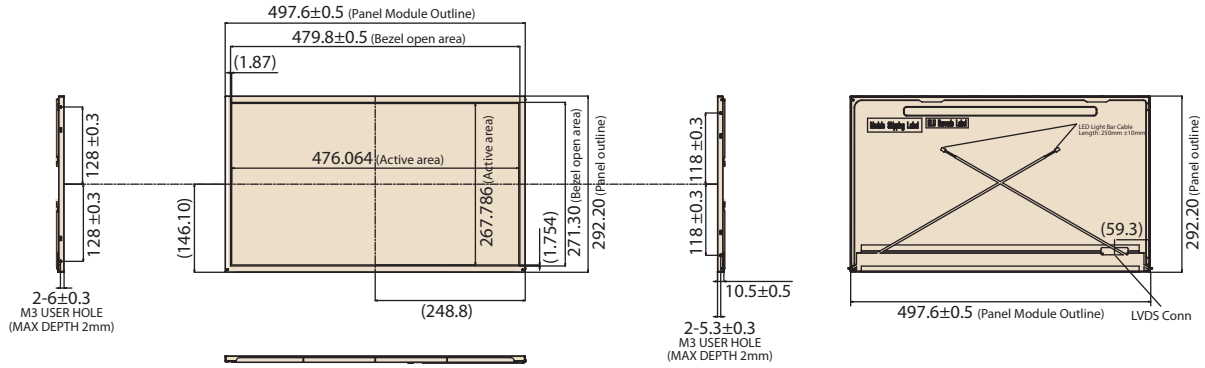
### No Color Shift



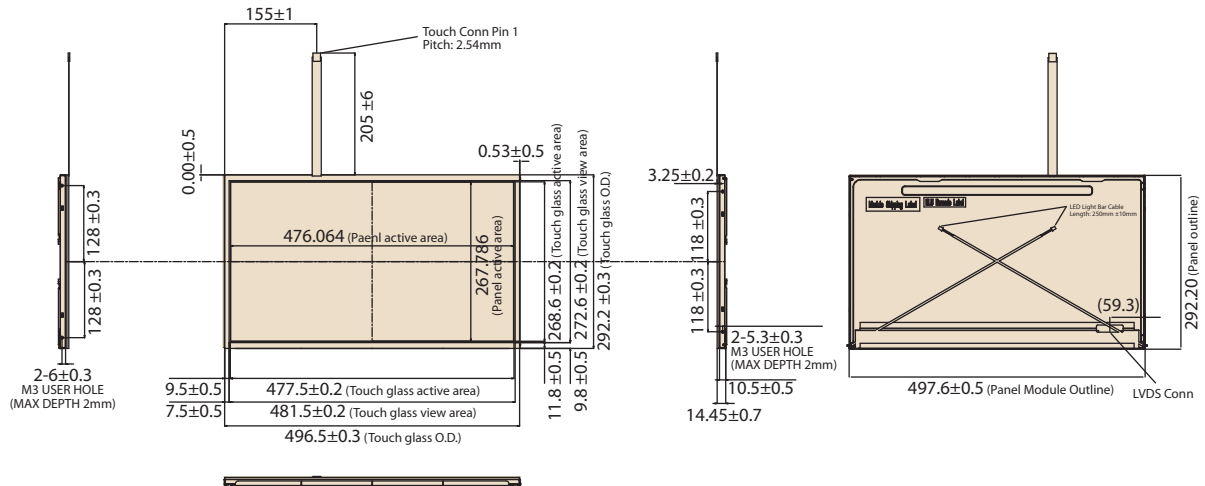
## Dimensions

Unit: mm

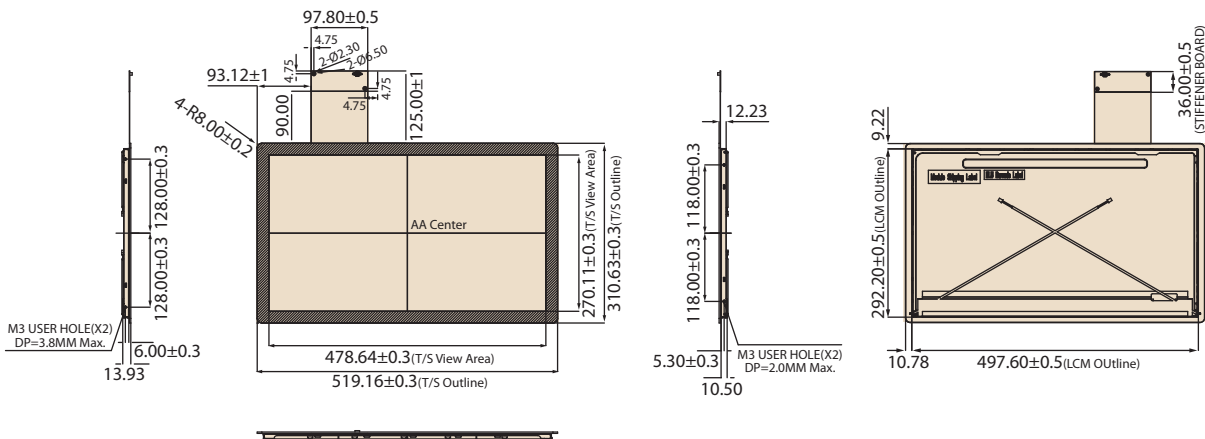
### IDK-2121WN-K2FHB1



### IDK-2121WR-K2FHB1



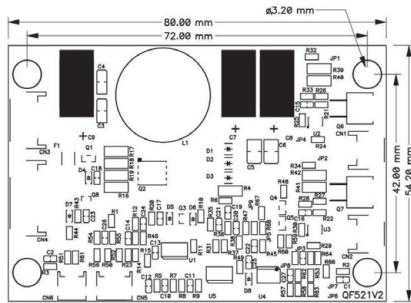
### IDK-2121WP-K2FHB1



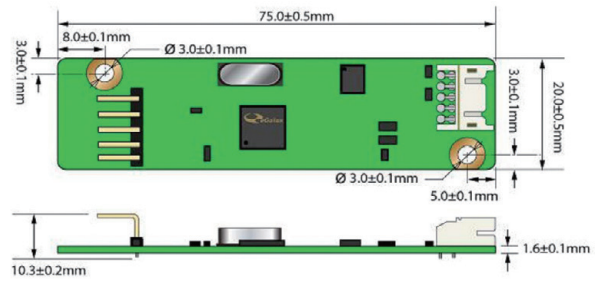
## Dimensions

Unit: mm

### LED Driver Board



### Touch Control Board for IDK-2121WR-K2FHB1 only



## Ordering Information

Part No.	Size	LCD Brightness (cd/m <sup>2</sup> )	Interface	Touch screen	Touch Interface
IDK-2121WN-K2FHB1	21.5"	1200	LVDS	N/A	N/A
IDK-2121WR-K2FHB1	21.5"	1200	LVDS	5-wire Resistive	RS-232/USB
IDK-2121WP-K2FHB1	21.5"	1200	LVDS	Projected Capacitive	USB

## Packing List

Part Number	Description
968DD00038	1 x LED driver board
ETM-RES04C-EEH4EE	1 x 5-wire USB touch controller (for IDK-2121WR only)
1700020324-01	1 x USB cable for Touch controller (for IDK-2121WR only)
1700028184-01	1 x USB cable for Touch controller (for IDK-2121WP only)

Note: Package contents are subject to change without prior notice

## Optional Order

SBC Part No.	LVDS cable P/N	Display interface	B/L cable P/N	Touch interface	Touch power input
MIO-5270	96CB-L3040PAF5	Dual channel 24bit LVDS (FHD)	N/A (external power was required)	USB	5V
AIMB-270	96CB-L3040PAF5	Dual channel 24bit LVDS (FHD)	N/A (external power was required)	USB	5V

Note: Package contents are subject to change without prior notice