

Industrial Computer Peripherals

Accessories

Slide Rails



For 2U and higher rackmount chassis

- 26" P/N: 9680006905
- Maximum acceptable load: 45 kg
- 1 pair included

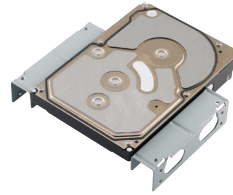
Industrial Disk Trays/Bays



IPC-DT-5121

Shockproof industrial hard disk drive tray with cooling fan and optional front USB and PS/2 interfaces

- Accepted Device: 1 x 3.5" HDD (only for 9.5mm thickness)
- Cooling Fan: 1 x 4 cm
- Color (Codes): Gray (414U), Black (4C2X)
- Dimensions (W x H x D): 148.5 x 42.6 x 171 mm (5.84" x 1.67" x 6.73")



989K008733

A frame to securely fix a 3.5" HDD in a 5.25" drive bay

- Accepted Device: 3.5" HDD x 1



IPC-DT-3120E

Mobile rack for converting a 3.5" drive bay to dual 2.5" SATA HDD/SSD trays

- Accepted Device: 2 x 2.5" SATA HDD/SSD (only for HDD/SSD thickness less than 9.6 mm)
- Dimensions (W x H x D): 101.6 x 25.4 x 139 mm (4" x 1" x 5.47")



989K008734

A frame to securely fix two 2.5" HDDs/SSDs in a 3.5" drive bay

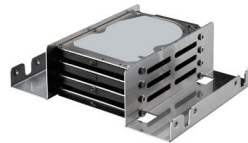
- Accepted Device: 2 x 2.5" SATA HDD/SSD (only for HDD thickness less than 9.6 mm)



9892200013E

Module to convert a 5.25" drive bay to a slim ODD and a 3.5" drive bay

- Accepted Device: 3.5" device x 1, slim ODD x 1



98R1BT0S000

A frame to securely fix four 2.5" HDD in a 5.25" drive bay

- Accepted Device : 24 x .5" SATA HDD/SSD (device thickness less than 9.6mm); or 2 x 2.5" SATA HDD/SSD (device thickness less than 15 mm)



IPC-DT-5230E

Mobile rack for converting dual 5.25" drive bays to three 3.5" SATA HDD trays

- Accepted Device: 1 x 3.5" device, 1 x slim ODD
- Cooling Fan: 1 x 8 cm
- Dimensions (W x H x D): 146.5 x 86 x 225 mm (5.76" x 3.38" x 8.85")



96RACK-5SS-CAGE-CR

Mobile rack for converting one 5.25" drive bay to four 2.5" SAS/SATA HDD/SSD trays

- Accepted Device: 4 x 2.5" SAS/SATA HDD/SSD
- Dimension (W x H x D): 146 x 41 x 170 mm (5.74" x 1.61" x 6.69")

Add-on Card Hold Down Kits



98RKBT0S09E

Add-on card hold down kit (short)

- Bracket quantity of each kit: 5 pcs
- For PCI add-on card with height 72.3mm ~ 87.3mm and PCIe add-on card with height 81.7 ~ 91.8 mm



98RKBT0S10E

Add-on card hold down kit (long)

- Bracket quantity of each kit: 5 pcs
- For PCI add-on card with height 54.8 ~ 75.7 mm and PCIe add-on card with height 59.3mm ~ 80.2mm