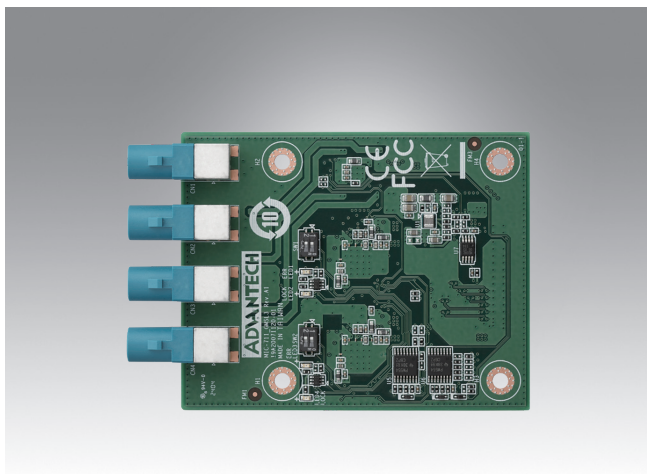


# MIC-FG-4G

## 4-port MIPI interface GMSL Video Capture Card



### Features

- Support 4ch GMSL camera
- Supports up to 4K, 30fps, quad channel
- MIPI 4 Lane compliant
- Power Over Coax
- V4I2, Gstreamer, Python support on Linux

### Specifications

GMSL	Compatibility	GMSL3, GMSL2
	Speed	12 / 6 Gbps
	No. of Ports	4
	Port Connector	Fakra
	Video Format	YUV422, YUV420
	Bus Interface	MIPI CSI-2, D-Phy V1.2 compliant
Power Requirements	Input Voltage	12 Vdc direct from MIPI bus
	Overload Current Protection	Present
	Output Power	Power over coax, 12 VDC Max. 6W per channel
Environment	Operating Temperature	0 ~ 75°C (32 ~ 122°F)
	Storage Temperature	-20 ~ 80°C (-4 ~ 176°F)
	Operating Humidity	5 ~ 95% RH
Mechanics	Dimensions (W x D)	60 x 75 mm
	Weight	200g
Certification	Compliance	FCC CE Class A

### Ordering information

Part Number	Description	Main Chip
MIC-FG-4G2C1	4-port MIPI interface GMSL2 Video Capture Card	MAX9296A

### Packing List

Part Number	Description	Quantity
MIC-FG-4G	4-port GMSL Video Capture Card	1

### Optional

Category	Part Number	Description	Quantity
cable	1751000805-01	RF Cable FAKRA-Z/F FAKRA-Z/F KS302 BLK L15M	by camera quantity