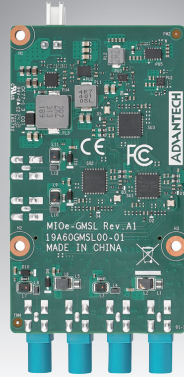


MIOe-GMSL

GMSL Input Module Card, for AFE-R360 series

NEW



Features

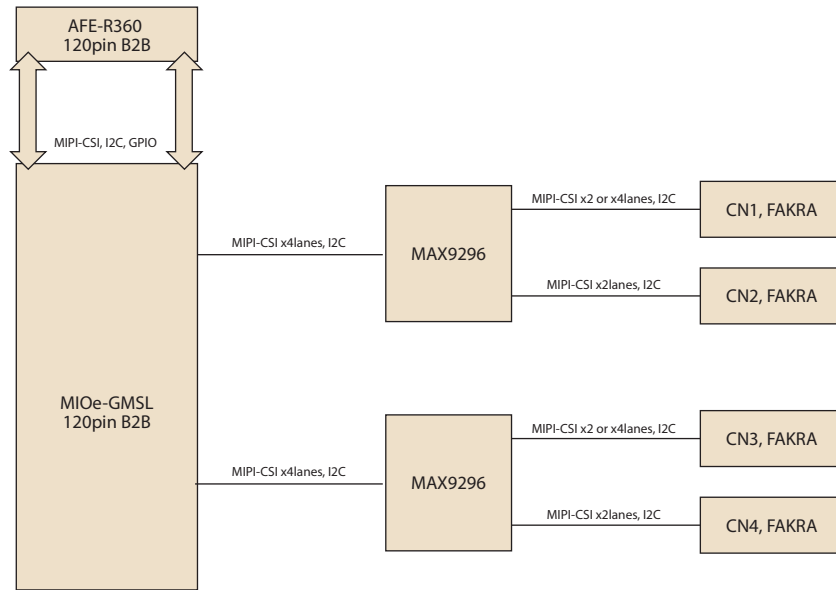
- GMSL Input Module Card
- Support 12~24V DC input
- Support 4x GMSL concurrently
- GMSL connector support POC: 12V, 500mA/1000mA
- Compatible with AFE-R360 series
- Support Ubuntu 22.04

Specifications

Product	MIOE-GMSL-4PA1	
Interface	Samtec 120pin B2B connector	
Power	DC input	12~24V
	Connector	2pin power connector (external power input required)
Camera	Interface	GMSL
	Connector	4x FAKRA
	Camera support qty and MIPI lane allocation	2 x4 lanes (CN1, CN3 only), or 4 x2 lanes (CN1 to CN4)
	Control pin	MIPI-CSI, I2C, GPIO
	Output Voltage	12V (support POC)
	POC	CN1, CN3: 1000mA CN2, CN4: 500mA
	Cable support length	up to 15M
Environment	Operating Temperature	0 ~ 60 °C (32 ~ 140 °F)
	Operating Humidity	40°C @ 95% relative humidity, non-condensing
	Storage	60 °C @ 95%relative humidity, non-condensing
	Vibration Resistance	3.5 Grms
	Certification	CE, FCC Class B
	Dimensions	55*95mm
	Net weight	60g
Compatibility	Board	AFE-R360 series
	camera	Intel RealSense D457, oToBrite oToCAM222, D3 Discovery
	OS	Ubuntu 22.04

*camera driver provided under Ubuntu OS

Block Diagram



Ordering Information

Part No.	Description	GMSL Input	Interface
MIOe-GMSL-4PA1	MIOe-GMSL Module, 4x FAKRA port	4	FAKRA

Development Kit Ordering Information

Part No.	Description	AFE-R360	Extension card	Memory	Storage	Camera	Image
AFE-R360DVK-G01	AFE-R360, 125H, 2x GMSL (3MP) development kit	AFE-R360C5P-Q5A1	MIOe-GMSL-4PA1	16GB	128GB	4x oToCAM222	22.04

Packing List

Part Number	Description	Quantity
9666R360020	AFE-R360 & MIOe-GMSL screw kit	1
1700023503-01	A cable plug-in 2P-5.0/PLUG-IN 2P-5.0+1x2P (AFE-R360 & MIOe-GMSL 2-to-1 power input cable)	1