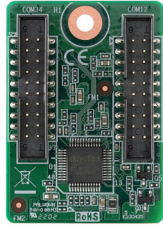
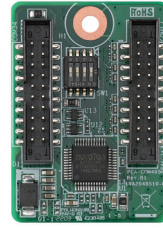


# Extension Modules for Slot SBCs



## PCA-COM232-ESPA1

- 4 RS-232 series ports extension module by eSPI connector on CPU card
- Dimensions (L x H): 30 x 42 mm (1.18" x 1.65")
- Support Model: PCE-5033/5133



## PCA-COM485-ESPA1

- 4 RS-422/485 series ports extension module by eSPI connector on CPU card
- Dimensions (L x H): 30 x 42 mm (1.18" x 1.65")
- Support Model: PCE-5033/5133



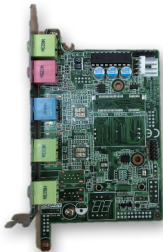
## PCA-TPMSPI-00A1

- Trusted platform module compliant with TCG 2.0 specification and TCG software stack 2.0 via SPI connector on CPU card
- Hardware based data protection solution for storage device encryption and decryption
- Dimensions (L x H) : 20 x 22 mm (0.79" x 0.87")
- Support Model: PCE-5033/5133



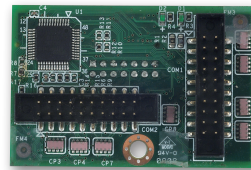
## PCA-TPMSPI-00A2

- Trusted platform module compliant with TCG 2.0 specification and TCG software stack 2.0 via SPI connector on CPU card
- Hardware based data protection solution for storage device encryption and decryption
- RSA 4096
- Dimensions (L x H) : 20 x 22 mm (0.79" x 0.87")
- Support Model: PCE-5033/5133



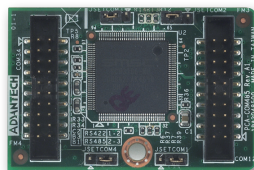
## PCA-AUDIO-HDB1E

- HD Audio Extension Module
- Line-out, Mic-in, Line-in, Surround-out, Speak-out, S/PDIF
- Dimensions (L x H): 68 x 125 mm (2.67" x 4.92")
- Support Model: PCE-5029/5031/5032/5033/5129/5131/5132/5133/7129/7131/7132/7133; PCE-3029/3032/4129/4132



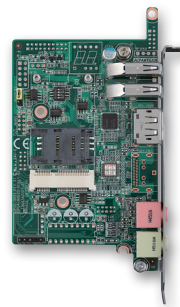
## PCA-COM232-00A2

- 4 RS-232 series ports extension module by LPC connector on CPU card.
- Dimensions (L x H): 31.5 x 48 mm (1.24" x 1.88")
- Support Model: PCE-5029/5031/5032/5129/5131/5132/7129/7131/7132; PCE-3029/3032/4129/4132



## PCA-COM485-00A1E

- 4 RS-422/485 series ports extension module by LPC connector on CPU card.
- With Auto-flow control function
- Dimensions (L x H): 31.5 x 48 mm (1.24" x 1.88")
- Support Model: PCE-5029/5031/5032/5129/5131/5132/7129/7131/7132; PCE-3029/3032/4129/4132



## PCE-SA01-00A1E

- I/O extension stack board
- 1 DP, 2 USB 3.0, MIC-in, LINE-out
- Dimensions (L x H) : 68 x 125 mm (2.67" x 4.92")
- Supports Model: PCE-3029, PCE-4128, PCE-4129
- Support Model: PCE-5029/5031/5032/5033/5129/5131/5132/5133/7129/7131/7132/7133; PCE-3029/3032/4129/4132



## PCA-TPM-00B1E

- Trusted platform module compliant with TCG 2.0 specification and TCG software stack 2.0 via LPC connector on CPU card
- Hardware based data protection solution for storage device encryption and decryption
- Dimensions (L x H) : 31.5 x 30.5 mm (1.24" x 1.2")
- Support Model: PCE-5029/5031/5032/5033/5129/5131/5132/5133/7129/7131/7132/7133; PCE-3029/3032/4129/4132