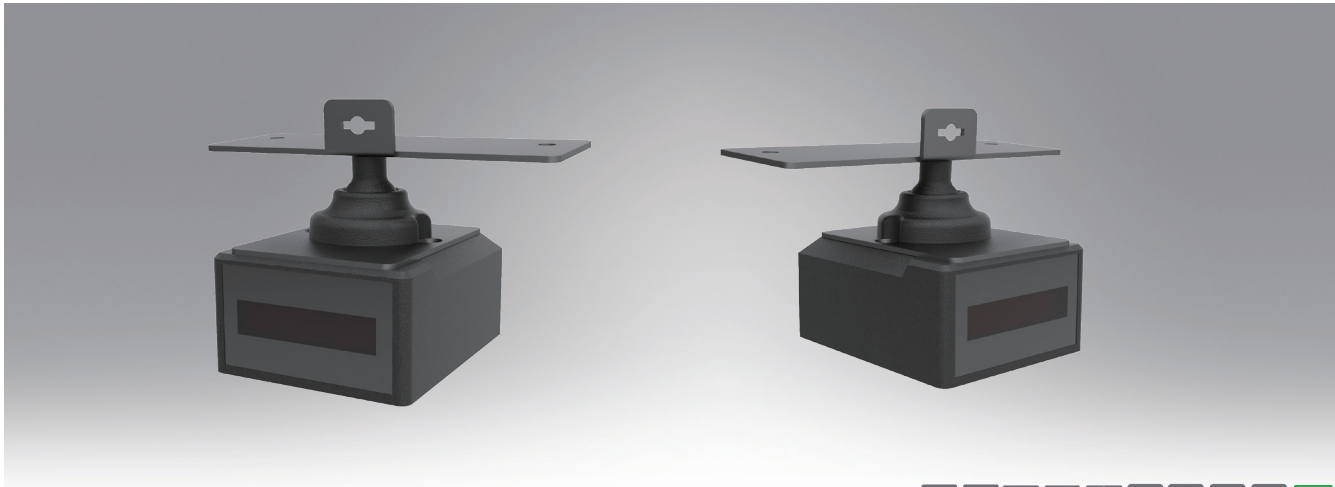


# USC-P05-B110

## 2D Barcode scanner



### Features

#### IR/Light Triggers

The combination of IR sensor and light sensor exhibits an improved sensitivity in activating the scanner to scan barcodes as they are presented, to achieve higher throughput and productivity.

#### Automatic Exposure Control (AEC)

The sensor in the USC-P05 automatically adjusts the supplementary lighting duration based on the light reflected off barcode.

#### IP54-sealed Housing

The USC-P05 is environmentally sealed to an IP54 rating to prevent dust, moisture and other contaminant from entering it.

#### Unmatched Reading Performance

Armed with Newland's fifth-generation of UIMG® technology, the USC-P05 is capable of reading 1D as well as high-volume 2D barcodes on the screen covered with protective film.

#### Highly Visible Laser Aimer

The USC-P05 provides a laser-generated crosshair aiming pattern that is clear and bright even in bright sunlight, ensuring first time accurate aim.

#### 1.5m Drop Resistance

The scanner withstands multiple 1.5m drops to concrete (for six sides, three drops per side).

#### Universal adjusting shaft

### Specifications

Performance	Image Sensor	1280 x 800 CMOS
	Illumination	White LED
	Aiming	Laser diode or green LED
	Symbologies	2D
		1D
		PDF417, QR Code, Data Matrix, AZTEC, CSC, Maxicode, Micro QR, Micro PDF417, GM, Code One, etc.
		EAN-13, EAN-8, UPC-A, UPC-E, Code 128, Code 39, Codabar, UCC/EAN 128, RSS, ITF, ITF-14, ITF6, Standard 25, Matrix 25, COOP 25, Industrial 25, Plessey, MSI Plessey, Code 11, Code 93, Code 49, Code 16K, etc.
	Resolution*	≥ 3mil
	Typical Depth of Field*	EAN-13 55-360mm (13mil)
		Code 39 70-180mm (5mil)
	PDF417 55-160mm (6.7mil)	
	Data Matrix 50-170mm (10mil)	
	QR Code 40-210mm (15mil)	
Scan Mode	Sense mode, Continuous mode, Level mode, Pulse mode	
Scan Angle**	Roll: 360°, Pitch: ±55°, Skew: ±55°	
Field of View	Horizontal 51°, Vertical 32°	
Min. Symbol Contrast*	25%	
Mechanical/Electric	Interface	USB
	Dimensions	41.5(W) x 49.5(D) x 24.3(H)mm
	Weight	75g
	Notification	Beep, LED indicator
	Rated Power Consumption	1622mW (typical)
	Operating Voltage	5VDC±5%
	Current @ 5VDC	Operating 276.8mA (typical), 322.7mA (max.) Standby 83.3mA
Environmental	Operating Temperature	-20 to 60 °C (-4 to 140 °F)
	Storage Temperature	-40 to 70 °C (-40 to 158 °F)
	Humidity	5% to 95% (non-condensing)
	ESD	±14 kV (air discharge), ±8 kV (direct discharge)
	Drop	1.5m
	Sealing	IP54
Certifications	FCC Part15 Class B, CE EMC Class B, RoHS, IEC60825, IEC62471, KC	

### Ordering Information

P/N	Description
USC-P05-B110	2D barcode scanner