

SignageCMS Server



Features

- Web-based digital signage content management system
- Edit and dispatch program with in 3 steps with a easy-to-use interface
- Support more than 30 media formats
- Support multi-screen displays and content cross-screen (videowall)
- Provide remote device management
- Offer system backup and recovery
- 1 Server supports up to unlimited SignageCMS Edge Players

Introduction

SignageCMS server is designed for simplifying your network operations, providing cost-effective performance and delivering state-of-the-art content distribution solutions. The product includes server system and server license (software only) that offers complete flexibility and control over displays and content.

WISE-PaaS/SignageCMS Server Build-Up and User Operating Workflow

Step1: Install the Server Software

Step2: Setup Signage Edge Player

Step3: All Operating via Web Browser



Get Start

- Install all needs environment by 1-click
- Login into web page and start to create user account or group (optional)

Link-Up the Player and Server

- Setup the server static IP address
- Login server to create the client by ID

Functions Ready to Go

- Program layout editing
- Program scheduling and bulk dispatch
- Client monitoring and power management and more...

Key Functions

Program Layout Editor

Easily drag and drop the materials to resize or reposition with real-time preview and support the content cross-screen display.



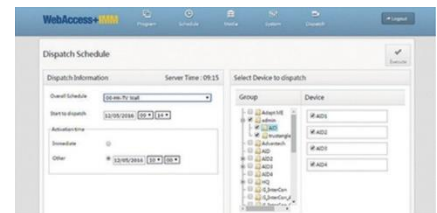
Scheduling Settings

Able to setup multiple programs in different time period, and scheduling in calendar. All these can be saved into different script.



Bulk Dispatch

Mark multiple client or group to dispatch all in one action, also able to scheduling the dispatch or activation time.



Specifications

SignageCMS Server

WISE-PaaS/ SignageCMS Server	Program	Directory Tree Display	Based on directory tree, easily to add, move and delete programs
	Management	Thumbnail Preview	Easier to find the right program for the next action
	Layout Editor	Displays Configuration	Displays' numbers, layout and resolutions setup. (support landscape & portrait)
		Friendly Interface	What you see is what you get, real-time content thumbnail preview
		Drag and Drop	Easily to reposition or resize by mouse click
		Playlist	Setup the content list, and replay automatically
		Background Color, Image, Music	Can be custom based on preferences
	Schedule	Rich Media Widget Support	Including image, audio, video, text, file, HTML, YouTube, RTSP and more
		Daily Schedule	Can be setup the programs by time period in a day.
	Management	Schedule by Calendar	Based on daily schedule, setup calendar for different schedule in specific date
		Schedule Management	Create, Copy, Delete or Export
		Appointment Dispatch	Scheduling the dispatch or activation date and time
	Remote Client Management	Bulk Dispatch	Unlimited
		Client Group Setting	Group the client to management more efficiency
		Remote Power On/Off	Power management via Intel AMT or Wake on LAN, and can be scheduled
		Remote Software Update	Get all clients version and update remotely
		Client Status Monitoring	Including the Heartbeat, System and Performance information
	System	Real-Time Screenshot Monitoring	Get the real-time client's screenshot and refresh automatically
		Authorization Setting	User can be setup with different functions permission or grouping to separate fully
	Management	Simultaneous Editing	System are able to accept multiple user operating at the same time
System Backup/ Recovery		Simply backup/restore the server system by 1-click	
Resume Download		In case the network is unstable or client going offline	
Differential Download		Saving the bandwidth	

Signage Edge Player (Connected to WISE-PaaS Signage Server)

WISE-PaaS/ SignageCMS Client	Content	Audio and Video Output	SD, HD, Full HD, 4K (*depend on device performance)
	Playback Engine	Displays Control	Portrait, Landscape display
		Multi-Screen Display	Unlimited
		Remote Software Update	Apply the new version update from server side
		Client status Report	Heartbeat, System and Performance information report
		Rich Media Format Support	Image: JPG, PNG, BMP, GIF Video: MP4, AVI, WMV, MOV, MPG, MKV (*depends on Codec) Text: Text, Scrolling Text, Bulletin, Time Audio: MP3, WMA, WAV File: PPT*, PPS*, PDF, SWF (Flash) Text: Interfacing TXT, EXCEL, RSS (1.0) Others: Web URL, HTML, YouTube, RTSP *3rd-party plug-in are required for content playback

WISE-PaaS / SignageCMS Server

Minimum Requirement

- OS: Windows 7 or above, Windows Server 2008 or above (not support Windows Server Datacenter)
- CPU: Intel Core i5 or above
- RAM: 8GB or above
- Hard Disk: 500GB or above (depend on media file size)
- Port: 80 (HTTP), 1883 (MQTT), 16992 (Intel AMT)
- IP Address: Static IP Address is required

*Apache HTTP Server and PostgreSQL are required for Server installation, please do not setup with different software system to avoid conflict.

Ordering Information

Signage Server Software & System

P/N	Description
968SPUDSS0	WISE-PaaS/SignageCMS Standard Server License
968SPUDSS1	WISE-PaaS/SignageCMS Pro Server License
USM-260UDS-G1E-C	USM-260_i5, RAM8G, HDD1TB, Win10, SignageCMS server
AIMC-342UDS-G1E-C	AIMC-3420_i5, RAM8G, HDD1TB, WES7, SignageCMS server