

USM-110WN

Multiple-use Clinical Gateway



Features

- Built-in NXP iMx6 with mature ECO and driver support
- 2 GB onboard memory (max. capacity)
- 16GB eMMC onboard expandable MicroSD (TF) storage
- Ultra-compact design for easy installation in confined spaces
- Supports various mount options including VESA, wall, pole, Magnet, and DIN-rail mounting
- Support Wifi and BT4.2 (BT 5.0 by BOM option)
- Support Linux Yocto 2.1



Introduction

USM-110WN is an ITE-certified edge solution-ready platform (SRP) aimed at diverse clinical applications. Powered by an NXP iMx6 with mature ECO and driver support processor with over 5 years longevity support HDMI for video recording and analysis and gateway to collect datas. USM-110WN provides a cost-effective, scalable solution for edge-to-hospital information system (HIS) and Internet of things (IoT) applications. For example Real time Location System(RTLS) and Vital Sign Gateway.

Product Highlights



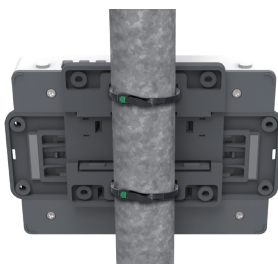
VESA Mount (75 x 75 mm)



Wall Mount (using the two side wings)



Magnet Mount (attached using magnets on the two wings)



Pole Mount (attached using cable ties)



DIN-Rail Mount

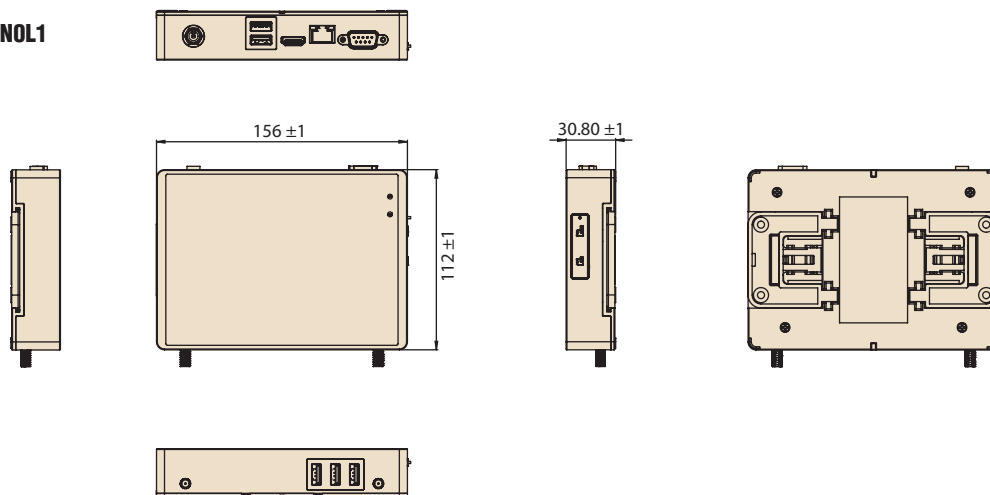
Specifications

		USM-110W-N0L1	USM-110W-N0L2
System	CPU	NXP i.MX6 Dual 1GHz	
Graphics	Graphics Engine	1 IPU, Open GL ES 2.0 for 3D, BitBit for 2D and OpenVG1.1	
Memory	Capacity	1 GB onboard (max. capacity 2GB)	
Storage	Flash	4GB of on board	
	Extension	Micro SD	
Multimedia	H/W Video Codec	Decoder: MPEG-4 ASP, H.264 HP, H.263, MPEG-2 MP, MJPEG BP Encoder: MPEG-4 SP, H.264 BP, H.263, MJPEG BP	
	Display Resolution	1920 x 1080	
I/O	HDMI	1	1
	LAN	1 x GbE Lan	1 x GbE with 4Kv Isolation 1 x GbE
	Serial Port	1 (RS232/485/422 by jumper)	1 (RS232/485/422 by jumper)
	USB 2.0 (for BT dongle and external USB disk)	5	5
	LED Indicators	1 x Power, 1 x Wireless	1 x Power, 1 x Wireless
	DC In	1	1
Network	LAN	RJ45 (10/100/1000 Mbit) x 1	Isolation RJ45(5 (10/100/1000 Mbit) *1 RJ45(5 (10/100/1000 Mbit)) *1
	Bluetooth	BT 4.2 (Default Module)/BT5.0 by BOM option	
	WLAN	802.11 a/b/g/n/ac (Default Module)	
Expansion	Micro SD Card Slot	1	1
Mechanical	Dimensions (L x W x H)	156 x 112 x 30.8 mm (6.14 x 4.41 x 1.21 in)	
	Weight	0.43 kg (0.94 lb)	
	Power	12V/3A	
Installation	Mount Options	VESA (75 x 75), wall, desktop, pole, magnet, DIN rail	
Software	Operating System	Support Linux Yocto 2.1	
	Supported Media Formats	H.264, MPEG-4, MPEG-2	
Environment	Operating Temperature	0 ~ 35 °C (32 ~ 95 °F)	
	Storage Temperature	-40 ~ 85 °C (-40 ~ 185 °F)	
	Relative Humidity	90% @ 40 °C (non-condensing)	
Certification		CE/FCC/CCC/BSMI/NCC/TELEC	

Dimensions

Unit: mm

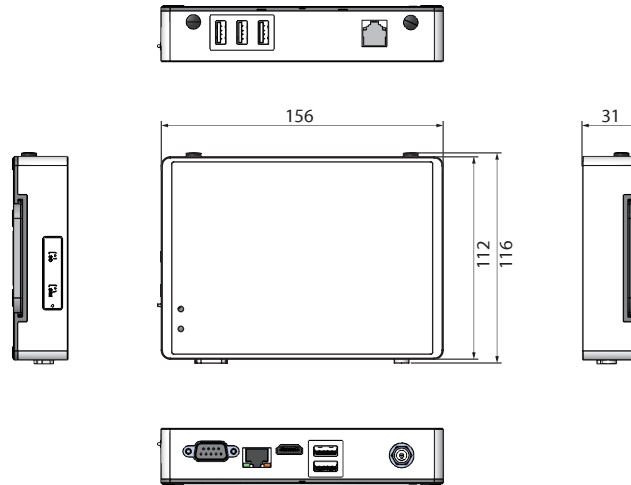
USM-110W-N0L1



Dimensions

Unit: mm

USM-110W-NOL2



Ordering Information

P/N	Description	RAM	Storage	WiFi/BT	OS	LAN port
USM-110W-NOL1	Freescall i.MX6 Dual Lite 1GHz with 1 x HDMI, 5 x USB2.0, 1 x GbE Lan, BT 4.2	1G	4G	802.11ac/a/b/g/n, 2T2R/BT 4.2	Linux Yocto 2.1	1
USM-110W-NOL2	Freescall i.MX6 Dual Lite 1GHz with 1 x HDMI, 5 x USB2.0, 2*GbE LAN, BT 4.2	1G	4G	802.11ac/a/b/g/n, 2T2R/BT 4.2	Linux Yocto 2.1	2

Optional Accessories

Product	Part Number	Usage	Description
HDMI Cable	1700023855-01	1	M cable HDMI 19P(M)/HDMI 19P(M) 1M with dual locks
WiFi/BT 5.0 Module	EWM-W159M201E	1	Realtek WiFi5+BT5.0 module
	1750008800-01	2	Antenna Cable R/P SMA(M) to MHF4, 100m
	1750008717-01	2	Dipole Ant. D.B 2.4/5G WIFI 3dBi SMA/M-R BLK

Product	Part Number	Usage	Description
Power Cord	1700019146	1	CCC 3P 2.5A 250V 183cm (China)
	170203183C	1	Power Cord EU 3P 2.5A 250V 183cm (Europe)
	1700008921	1	PSE 3P 7A 125V 183cm (Japan)
	1700001524	1	SVT 18/3 105 °C CT-12 1.83M(USA)
Adapter	170203180A-01	1	H05VV-F (RVV 300/500V) 3G 0.75 CT-12 1.83M(UK)
	96PSA-A36W12W7	1	ADP A/D 100-240V 36W 12V WO/PFC

I/O Interface

USM-110WN

