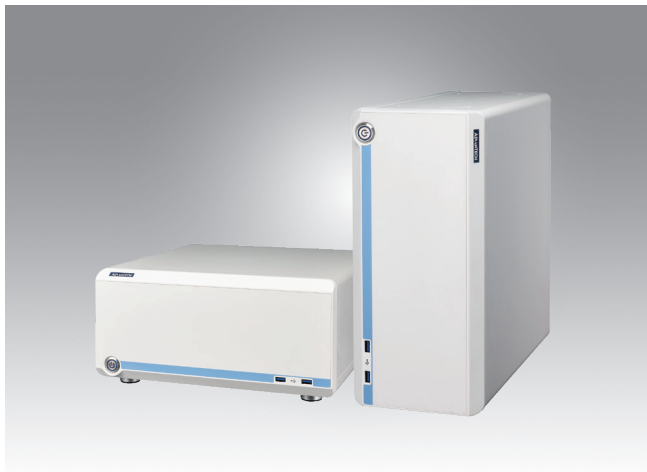


# USM-500 Preliminary

## Professional Tower/Standalone Medical Computer with NVIDIA IGX



### Features

- Stylish and user friendly outlook for hospital environment
- Harness the power of the NVIDIA IGX advanced functional safety and security platform for medical AI applications
- IGX is powered by the world's most powerful AI computer for energy-efficient autonomous machines with 275 tera operations per second (TOPS) of AI performance and includes an NVIDIA® ConnectX®-7 smart network interface card (SmartNIC) with 200 gigabits per second (Gb/s) of networking speed; ideal for securely ingesting high frame rate raw video



### Introduction

NVIDIA IGX delivers ultra-fast performance in the size and power envelope needed for the edge. Powered by the world's most powerful AI computer for energy-efficient autonomous machines and an NVIDIA® ConnectX®-7 smart network interface card (SmartNIC), IGX expands upon traditional commercial offerings with long-term support, advanced functional safety, and enhanced security.

### Specifications

Model Name		USM-500 IGX
Computing System	CPU	12-core Arm® Cortex®-A78AE v8.2 64-bit CPU 3MB L2 + 6MB L3
	Memory	64GB 256-bit LPDDR5 204.8 GB/s
	Wi-Fi (M.2 2230)	Optional Wi-Fi 6
	Bluetooth	Optional Bluetooth 5.3
	OS	Linux
Storage	Primary Storage	1 x M.2 NVME SSD
	Secondary Storage	2 x 2.5" SATA SSD
I/O Ports	USB 3.2 Type A	4
	USB 3.2 Type C	1
	DP 1.4	1
	QSFP (100GbE)	2
	LAN (1 GbE)	2
	Line-out	1
	Mic-in	1
Expansion	PCIe Slot	1 x PCIe (x8) 1 x PCIe (x16)
Power Input	AC	AC 100-240V, 900W
Certificate	EMC & Safety Cert.	Medical CE, FCC Medical, IEC 60601-1 Compliance (MDR) UL 60601-1 CCC ErP RED

## Dimensions

Unit: mm

