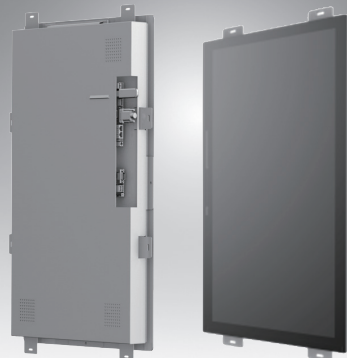


UTC-215

15.6" Open-frame panel PC
UTC-215D with Intel® Celeron® J1900
UTC-215F with Intel® Core™ i5-6300U
UTC-215G with Intel® Pentium® N4200

Preliminary



Features

- Available for embedded into kiosk chassis and wall mount type
- One-piece and fan-less design
- Rich screen size and core from UTC series
- Rich IO for extensional peripherals connection
- Built-in Intel® Celeron® J1900 (UTC-215D)
- Built-in Intel® Core™ i5-6300U (UTC-215F)
- Built-in Intel® Pentium® N4200 (UTC-215G)
- Providing Natural Viewing Experience with 15.6" Display
- Could be take as monitor only

CE FCC

Introduction

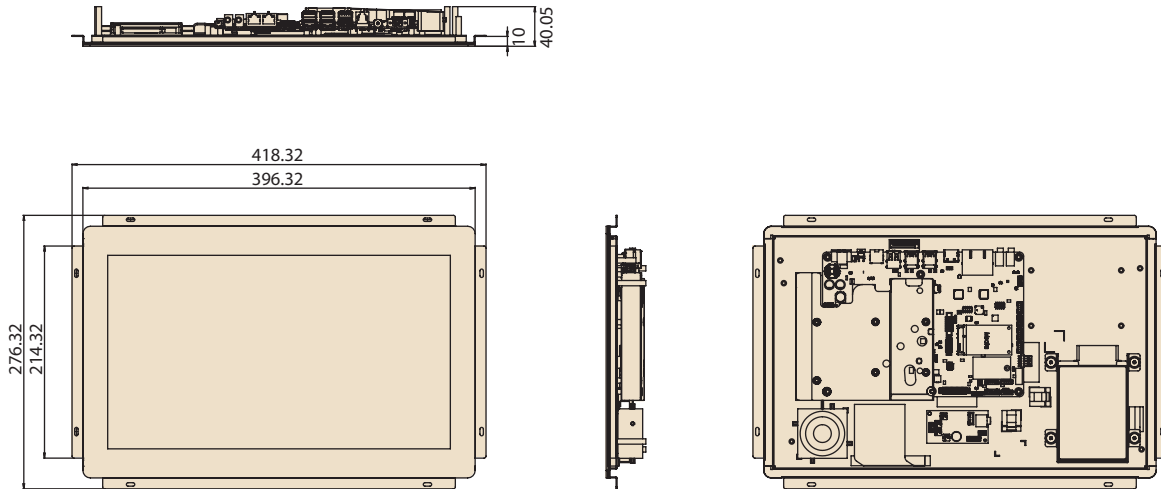
UTC-215 features one-piece solution and fan-less design that easy to embedded into kiosk chassis or wall mount type. Continuation of the advantage from UTC series, It is easy to integrate key peripherals and display systems for diversified self-service and interactive signage deploy in different application areas. The systems deliver updated information with well-designed interactive interfaces, fully ensure relevant content and targeted promotions are delivered.

Specifications

Processor System	CPU	Intel® Celeron® J1900 (UTC-215D)	Intel® Core™ i5-6300U (UTC-215F)	Intel® Pentium® N4200 (default) (UTC-215G) Intel® Celeron® N3350
	Basic Frequency	2.0 GHz (Quad-Core)	2.4GHz (Duo Core)	1.10 GHz (Quad-Core)
	L2 Cache MB	2MB	L3 Cache 3MB	L2 Cache 2MB
	Memory	1 x SO-DIMM DDR3L 1333 MHz up to 8 GB	1 x SO-DIMM DDR4 2133 MHz up to 16 GB	1 x SO-DIMM DDR3L 1866 MHz up to 8GB
	HDD	1 x 2.5 internal SATA HDD bay		
	Network	2 x Gigabit Ethernet ports (RJ-45)		
	I/O ports	1 x RS-232 1 x RS-232 / 422 / 485 5 x USB 2.0 / 1 x USB 3.0 2 x Gigabit Ethernet (RJ-45) 1 x HDMI 1 x RJ-11 Audio Line-out x 1, Mic-in x 1	1 x RS-232 1 x RS-232/422/485 2 x USB 2.0 / 4 x USB 3.0 2 x Gigabit Ethernet (RJ-45) 1 x HDMI 1 x RJ-11 Audio Line-out x 1, Mic-in x 1	1 x RS-232 1 x RS232 / 422 /485 2 x USB 2.0 / 4 x USB 3.0 2 x Gigabit Ethernet (RJ-45) 1 x HDMI 1 x RJ11 Audio Line-out x 1, Mic-in x 1
	Stereo Speaker	10W x 2 (optional)		
	Bus expansion	Full-size MiniPCIe/mSATA		
	Dimensions (W x H x D)	418.32 x 276.32 x 40.05 (mm)		
Weight	3.1kg			
OS Support		WES 7P 32bit WES 7E 32bit Windows Pro Embedded 7 SP1 64bit WE8S 64bit Windows Embedded 8.1 Industry Pro 64bit Win 10 IoT Enterprise 64bit Linux Ubuntu 16.04 Android 4.4	WES 7P 32bit WES 7E 32bit Windows Pro Embedded 7 SP1 64bit WE8S 64bit Windows Embedded 8.1 Industry Pro 64bit Win 10 IoT Enterprise 64bit Linux Ubuntu 16.04	Win 10 IoT Enterprise 64bit Android 6.0 Linux Ubuntu 18.04
Environmental Specifications	Operating Temperature	0 - 40° C (32 - 104° F)		
	Relative Humidity	10 - 95% @ 40° C non-condensing		
	Vibration	0.5G		
	Shock	5G peak acceleration (11 msec. duration)		
Power Supply	EMC/ Safety	CE, FCC		
	Input Rating	12 V/7 A (84W ITE Adapter) *12-30V Optional	12-30V/7A (84W ITE Adapter)	12 V/7 A (84W ITE Adapter) *12-30V Optional
	Power consumption	Typical 35W Max. 40W		
LCD Display	Size/Type	15.6" TFT LCD		
	Max. Resolution	1366 x 768 (FHD 1920 x 1080 Optional)		
	Max. Color	16.7M		
	Pixel Pitch (um)	252(H) x 252(V)		
	Brightness (cd/m ²)	400		
View Angle	170°/160°			
Touch Screen Option (PE/RE/GE)	Type	Analog Resistive 5-wires (Res. Flat Glass) / Projected Capacitive Touch Panel (Pcap. Flat Glass) / Glass Panel		
	Light Transmission	Res. Touch: 80% ± 5% / P-Cap Touch: 90% ± 2%		
	Controller	USB Interface / USB Interface / -		

Dimensions

Unit: mm



Ordering Information

Part No.	Description
UTC-215DP-AT00E	15.6" P T/S, Celeron J1900, 4GB RAM, Open-frame
UTC-215FP-AT00E	15.6" P T/S, Core i5 6300U, 4GB RAM, Open-frame
UTC-215GP-AT00E	15.6" P T/S, Pentium N4200, 4GB RAM, Open-frame