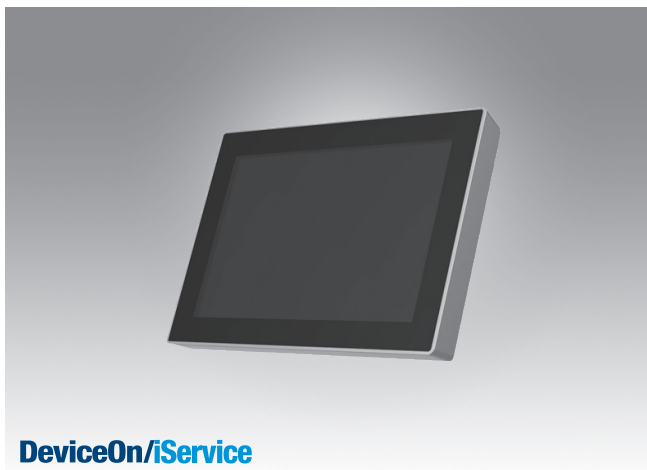


# UTC-510K

## 10.1" Ubiquitous AIO Computer UTC-510K with Intel® Atom® N97/i3-N305



### Features

- Low Power & Fanless design
- Built-in Intel® Atom® N97/i3-N305 (UTC-510K)
- Providing Natural Viewing Experience with 16:10 10.1" Display
- Landscape & Portrait screen mode support by different applications
- VESA 75 mm standard mounting holes for varied mounting demands
- Detachable plastic frame design for panel mount applications
- Support DeviceOn/iService software for remote device management



### Introduction

UTC-510 features an all-in-one computing system equipped with wide format based LCD panel. It is easy to integrate key peripherals and display systems for diversified self-service and interactive signage deploy in different application areas. The systems deliver updated information with well-designed interactive interfaces, fully ensure relevant content and targeted promotions are delivered. UTC series AIO computers are the best investments to enhance user satisfaction, further brand equity, and maximize business profits.

Moreover, Advantech DeviceOn/iService Software is a next-generation unified device management unified device management solution based on the WISE-DeviceOn platform. With support for batch operations and multi-device control, DeviceOn/iService enables easy device configuration and deployment for convenient remote device management.

### Specifications

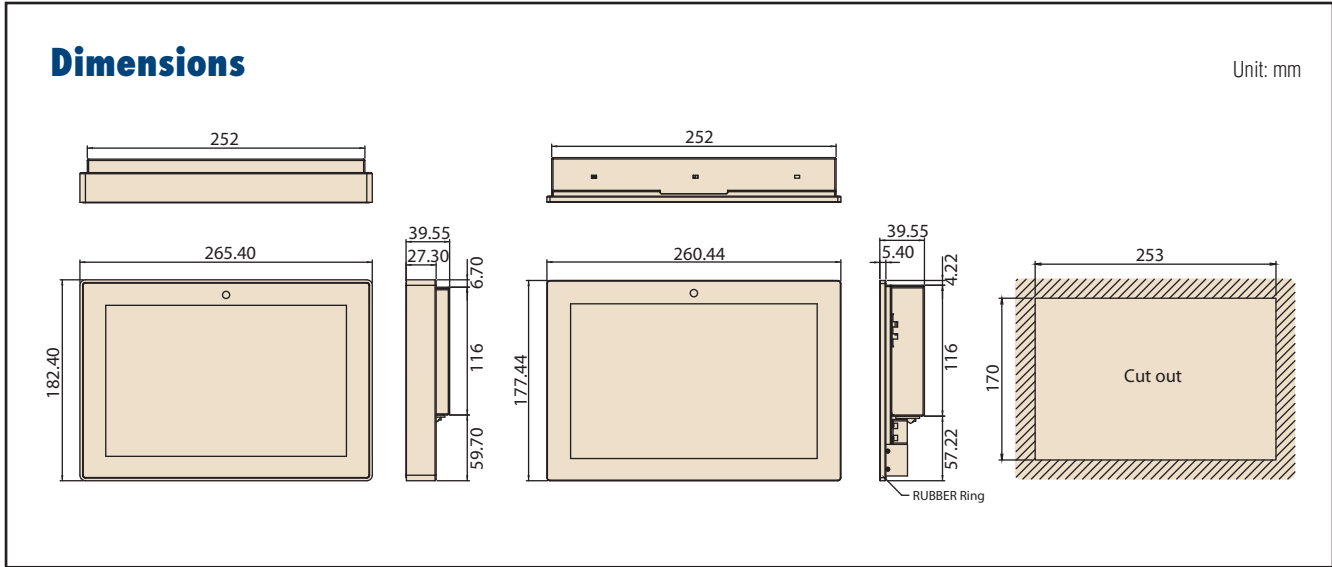
Processor System	CPU	Intel® Atom® N97 Intel® Atom® i3-N305
	Base Frequency	N97: 3.6 GHz (4 cores) i3: 3.8 GHz (8 cores)
	LLC	6 MB Cache
	Memory	1 x 262 pin SO-DIMM DDR5-4800 up to 16GB
	HDD	N/A
	Network (LAN)	2 x GbE LAN: Realtek RTL8111K
	I/O ports	2 x USB 3.2 2 x USB 2.0 2 x RJ-45, Realtek RTL8111K 1 x HDMI (up to 4096 x 2160 x 24bpp@48-60Hz) 1 x DP (up to 4096 x 2304 x 36bpp@60Hz) 2 x RS-232/422/485, max. 1Mbps 1 x Audio Line-out 1 x Mic-in
	Stereo Speaker	2 W x 2
	Bus expansion	1 x E-Key 2230 (PCIe x1, USB2.0) 1 x B-Key 2280 (SATA x1)
	Mounting	VESA 75 x 75 mm, M6*21L
	Dimensions (W x H x D)	265.40 x 182.40 x 39.55 mm
	Weight	1.80 kg (3.97 lbs)
	OS Support	Windows 10/11 IoT Enterprise Android 14 Linux
Environmental Specifications	Operating Temperature	0 ~ 40 °C/32 ~ 104 °F
	Storage Temperature	-20 ~ 70 °C/ -4 ~ 158 °F
	Operation Humidity	95% @ 40 °C/104 °F, non-condensing
	Storage Humidity	95% @60 °C/140 °F, non-condensing
	Vibration	1Grms
	Shock	10G peak acceleration (11 msec. duration)
	Certification	CE (RED certification), FCC, CB, UL, CCC, BSMI, ErP
	Front Panel Protection	IP65 rated/NEMA4 compliant
Power Supply	Input Voltage	12V
	Adapter	5A (60W ITE Adapter)
	Power consumption	Typical 35W Max. 40W

**Specifications (Cont.)**

LCD Display	Size/Type	10.1" TFT LCD with LED backlight
	Max. Resolution	1280 x 800
	Max. Color	16.7M
	Pixel Pitch (um)	169.5 x 169.5
	Brightness (cd/m <sup>2</sup> )	350
	View Angle	170 / 170
	Camera	5 Mega Pixel (Optional)
DeviceOn/iService Remote Device Management	Operating System	Windows 10
	Common Controls (Reboot, Shutdown)	✓
	Remote desktop	✓ (VNC)
	Audio Controls	✓*
	Connection Status	✓
	Hardware Status	✓*
	Hard Disk Status	✓*
	Batch Operation Support	✓
	OTA Storage Management	FTP
	OTA Software Updates	✓
	Software Watchlist	✓
	Software Start/Stop	✓*
	Peripherals Watchlist	✓*

\*Dependant on device model

Note: DeviceOn/iService software must be downloaded from the Advantech website at <https://www.advantech.com/search?q=DeviceOn%2FiService&st=support&sst=Utility>



## Ordering Information

Part No.	Description
UTC-510KP-ATB0E	10.1" PCT T/S with Intel® Atom® N97, 8GB RAM, ITE Adapter
UTC-510KP-ATB1E	10.1" PCT.T/S with Intel i3-N305, 8GB RAM, ITE Adapter
1702002600	Power Cord 3P UL/CSA(USA) 125V 10A 1.83M 180D
1702002605	Power Cord 2P FRANCE 10A/16A 220V 1.83M 90D
170000596-11	Power cable, CCC, 3P, 10A, 250V, 183 cm (China)
1700032693-11	Power cable, BSI, 2P, 10A, 250V, 180 cm (UK)
1960117660N001	IO Cover UTC-510J/K
1931031500	Screws for IO Cover UTC-510(*2)

### Peripherals for UTC-510 series (by Request)

Part No.	Description
UTC-510P-B03E	2D Barcode Scanner - Honeywell N4680 For UTC-510 (USB connection)
UTC-510P-R01E	RFID Reader For UTC-510 (USB connection)
UTC-510P-M01E	Magnet Strip Reader For UTC-510 (USB connection)
UTC-510P-S01E	Smart Card Reader For UTC-510 (USB connection)

### Installation Accessory (by Request)

Part No.	Description
UTC-WALL-MOUNT5E	UTC-510 VESA mount (75 x 75)
UTC-510-STAND1E	UTC-510K desktop stand
1960086099N000	UTC-510 Panel Mount Clamper (order 4pcs per unit)
1930005598	UTC-510 Panel Mount Screw (order 4pcs per unit)
ARES-2414X-S150201	Table Stand, 75x75mm

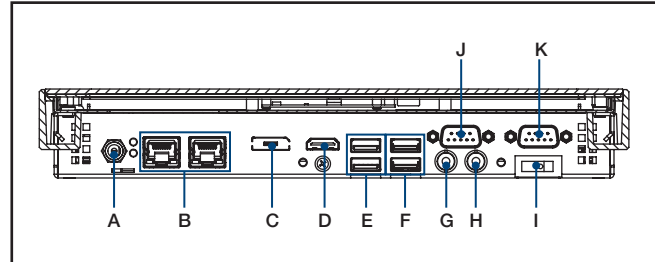
### WiFi ordering information for UTC-510 series

#### UTC-510K

Part No.	Description
UTC-510W-A5E	AIW-170BQ, 802.11ax/ac/b/g/n, BT5.2, QCA6856, 2T2R, M.2 2230

## Fully- Integrated I/O

### UTC-510K



- A. DC Power Jack
- B. LAN Port x 2
- C. DP
- D. HDMI
- E. USB 3.2 x 2
- F. USB 2.0 x 2
- G. Mic-in
- H. Line-out
- I. Power Switch
- J. COM 2
- K. COM 1

# DeviceOn/iService

## Unified Remote Device Management Software



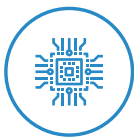
### Features

- Supports Advantech devices equipped with Windows, Android, and Linux OS
- Flexible device, location, user, and permissions management
- Enables remote monitoring and control of hardware, software, and peripherals
- Supports over-the-air (OTA) firmware and software updates
- Ensures quick, easy, and secure device onboarding
- RESTful APIs for third-party system integration

### Introduction

Advantech's DeviceOn/iService is a next-generation unified device management solution based on the WISE-DeviceOn platform. Designed to enable centralized monitoring and remote management, DeviceOn/iService supports Advantech devices equipped with Windows, Linux, or Android operating systems. The software also supports the management of applications and integrated peripherals, such as a barcode scanner, card reader, camera, and printer. Users can remotely access and control connected devices, take screenshots, rollout OTA upgrades, and use remote desktop capabilities for troubleshooting from any location at any time. Moreover, DeviceOn/iService supports batch operations to facilitate the management of multiple devices simultaneously for easy and convenient device configuration and deployment.

### Total Management



#### Devices & Hardware

- Windows, Linux, Android
- Hardware, storage, battery



#### Software & Peripherals

- Software monitoring & access
- Screens, USB devices, printers



#### Open for Expansion

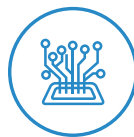
- Peripheral integration
- Open APIs for integration

### Remote Access



#### Real-Time Monitoring

- Connection/hardware status
- Software/peripheral status
- Failure notifications



#### Remote Controls

- Power controls
- Audio, backlight controls
- Software controls



#### Troubleshooting

- Screenshots
- Remote desktop support

### Operational Efficiency



#### OTA updates

- System/software updates
- File repository management
- App store



#### Batch Controls

- 1-to-many batch reboot, etc.
- Time-saving tasks



#### Setup Booster

- Software/peripheral watchlist
- Roles, rule templates

Note: Some functions may vary according to the product

### System Architecture

